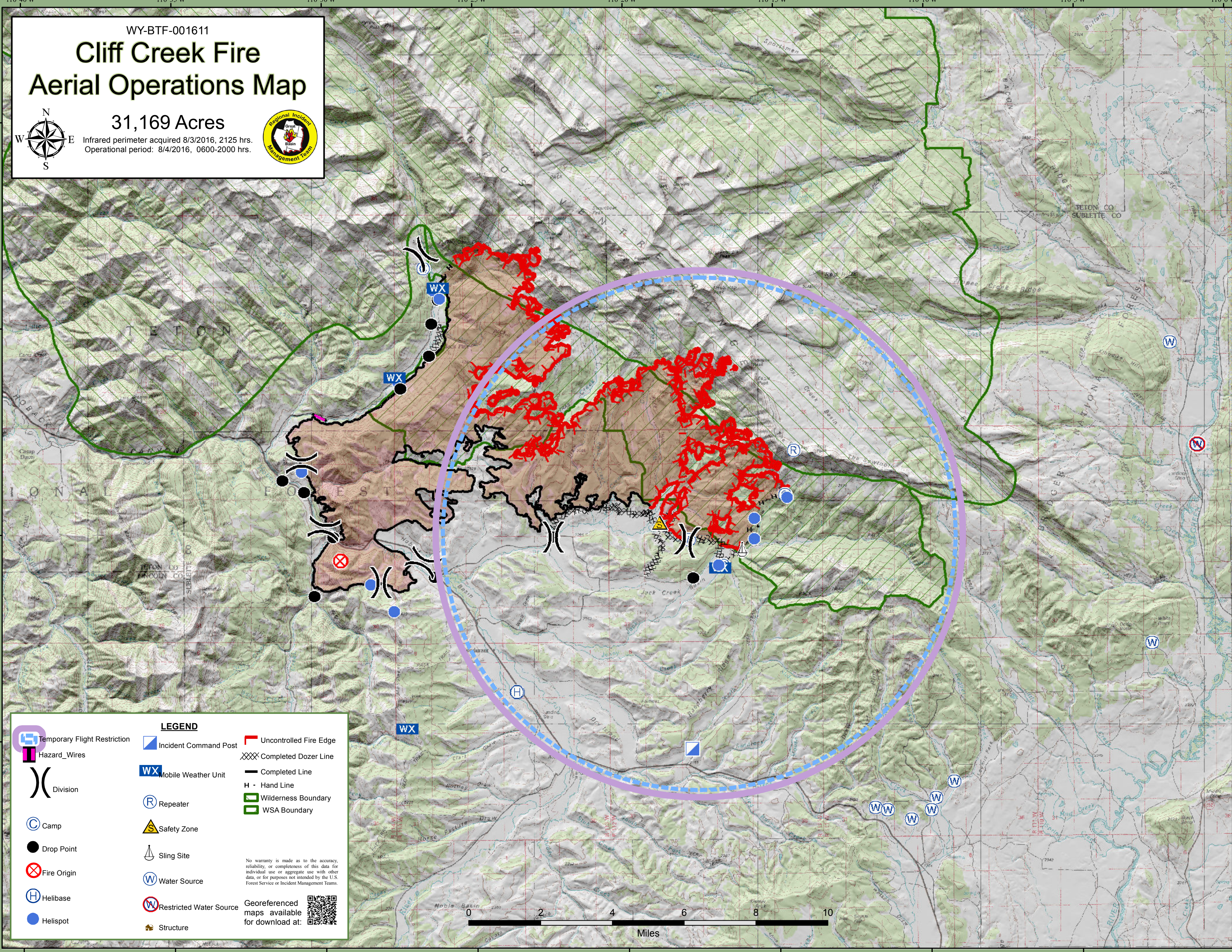
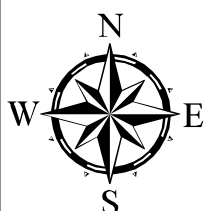


Cliff Creek Fire Aerial Operations Map

WY-BTF-001611

31,169 Acres

Infrared perimeter acquired 8/3/2016, 2125 hrs.
Operational period: 8/4/2016, 0600-2000 hrs.



LEGEND

Temporary Flight Restriction	Incident Command Post	Uncontrolled Fire Edge
Hazard_Wires	Mobile Weather Unit	Completed Dozer Line
Division	Repeater	Completed Line
Camp	Safety Zone	H - Hand Line
Drop Point	Sling Site	Wilderness Boundary
Fire Origin	Water Source	WSA Boundary
Helibase	Restricted Water Source	
Helispot	Structure	

No warranty is made as to the accuracy, reliability, or completeness of this data for individual use or aggregate use with other data, or for purposes not intended by the U.S. Forest Service or Incident Management Teams.

Georeferenced maps available for download at:

