


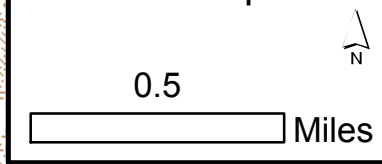


-  Drop Point
-  Helispot
-  Mobile Weather Unit
-  Pump
-  Completed Line



Div U

Granite Spike

Div HK

H-3

IRAWS Granite Snotel

H-6

DP-38

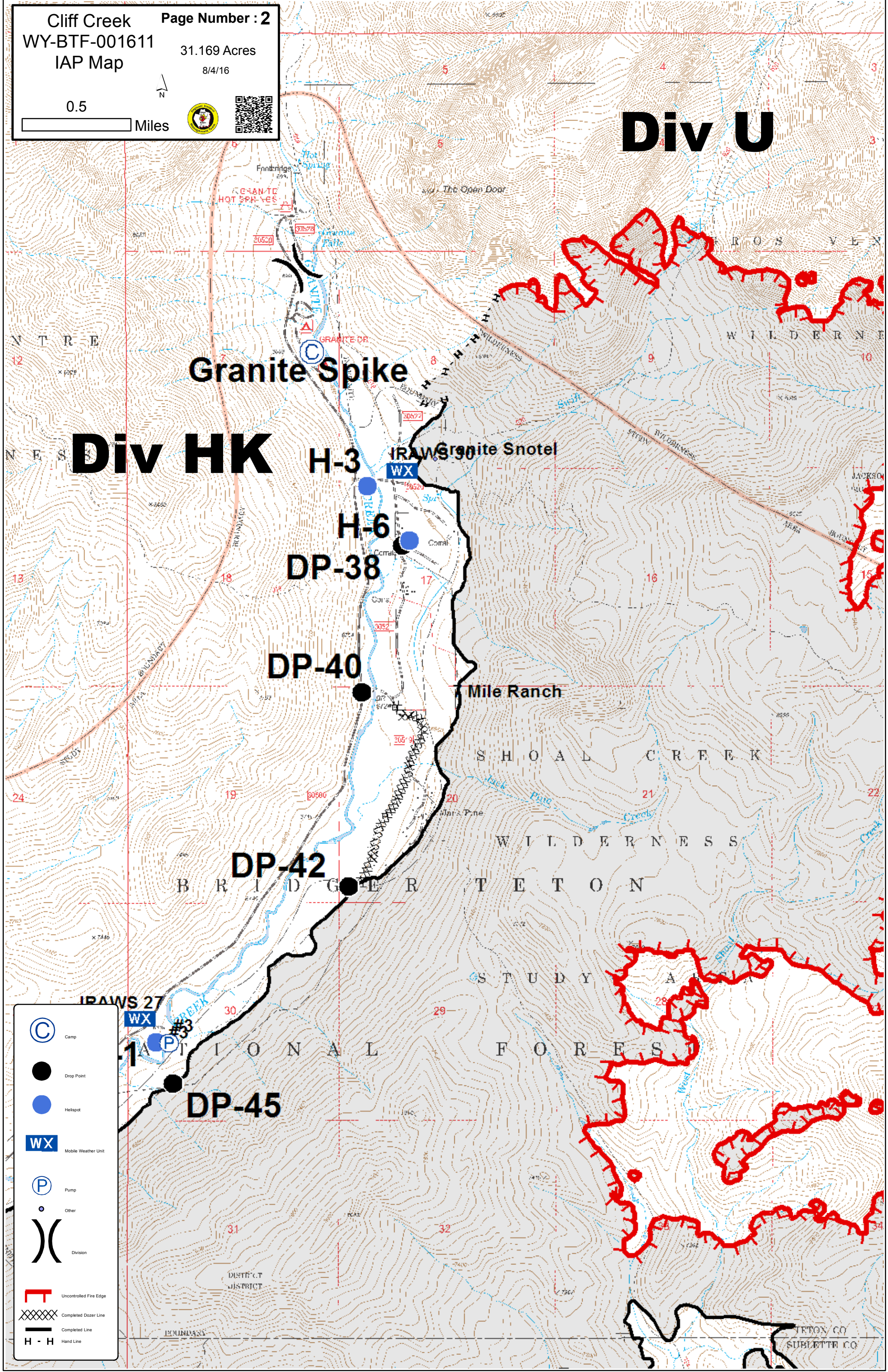
DP-40

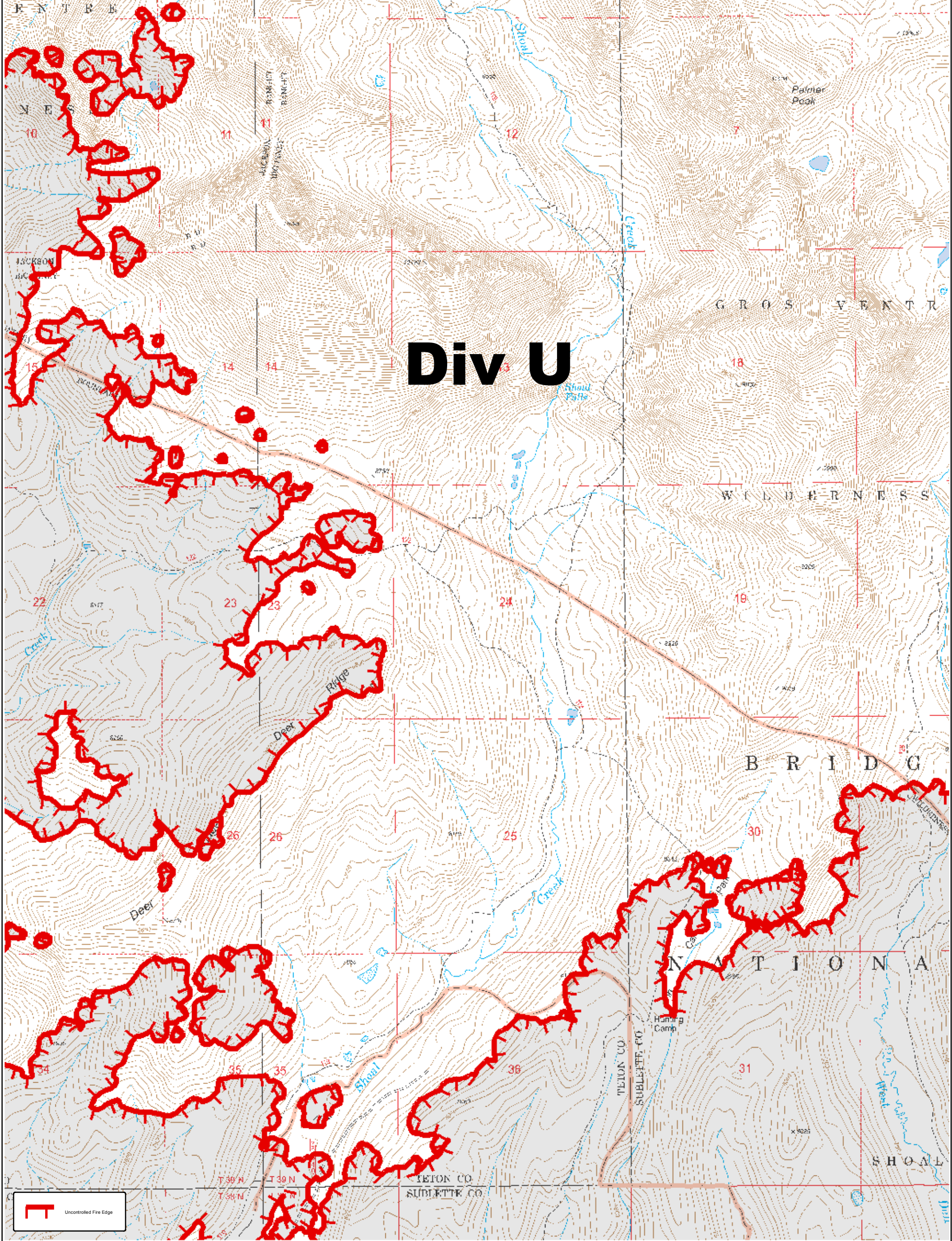
Mile Ranch

DP-42

DP-45

- Camp
- Drop Point
- Helispot
- Mobile Weather Unit
- Pump
- Other
- Division
- Uncontrolled Fire Edge
- Completed Dozer Line
- Completed Line
- Hand Line

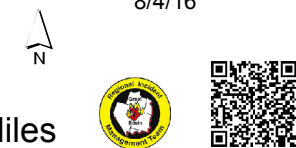
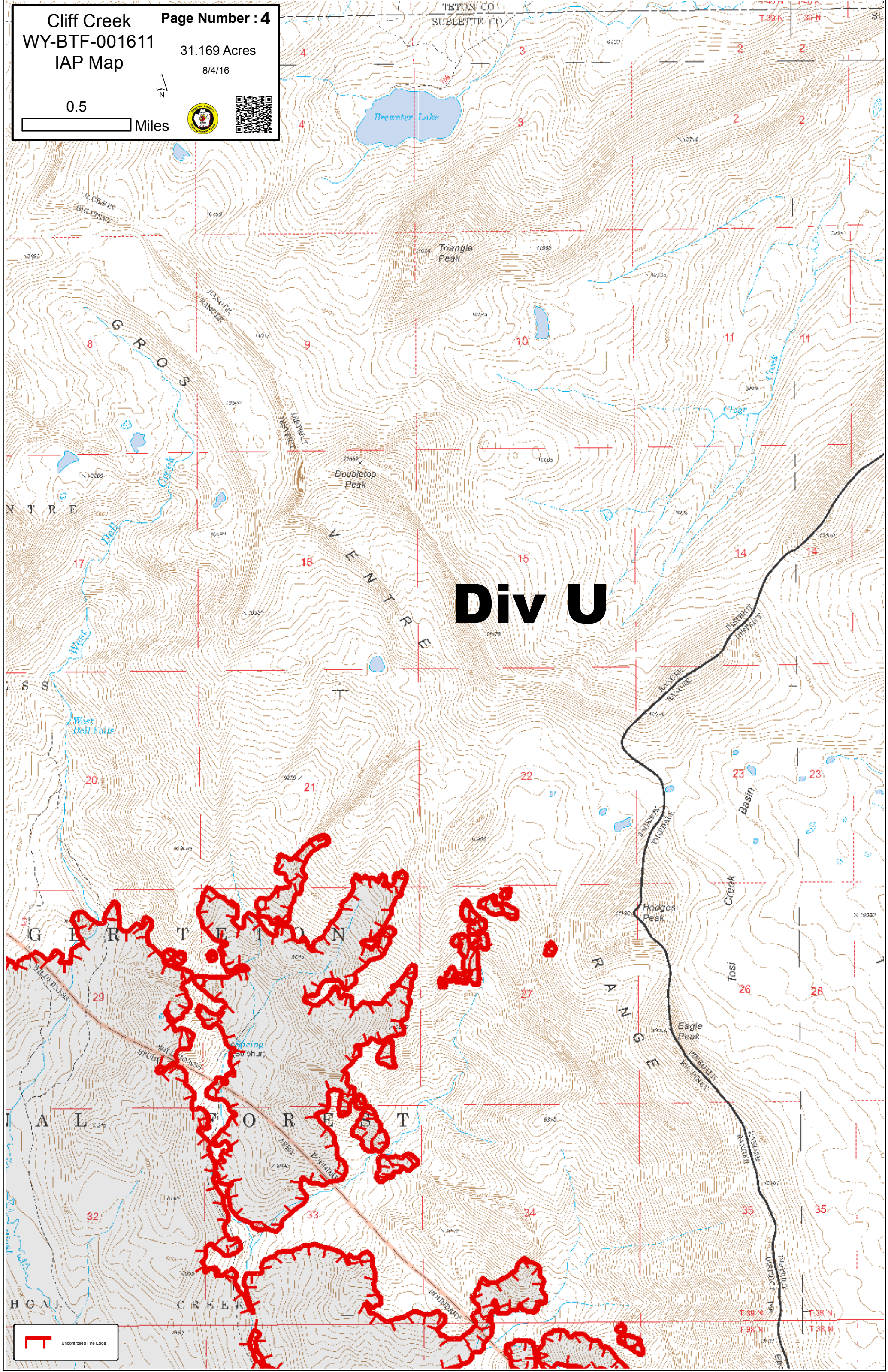




Cliff Creek
 WY-BTF-001611
 IAP Map

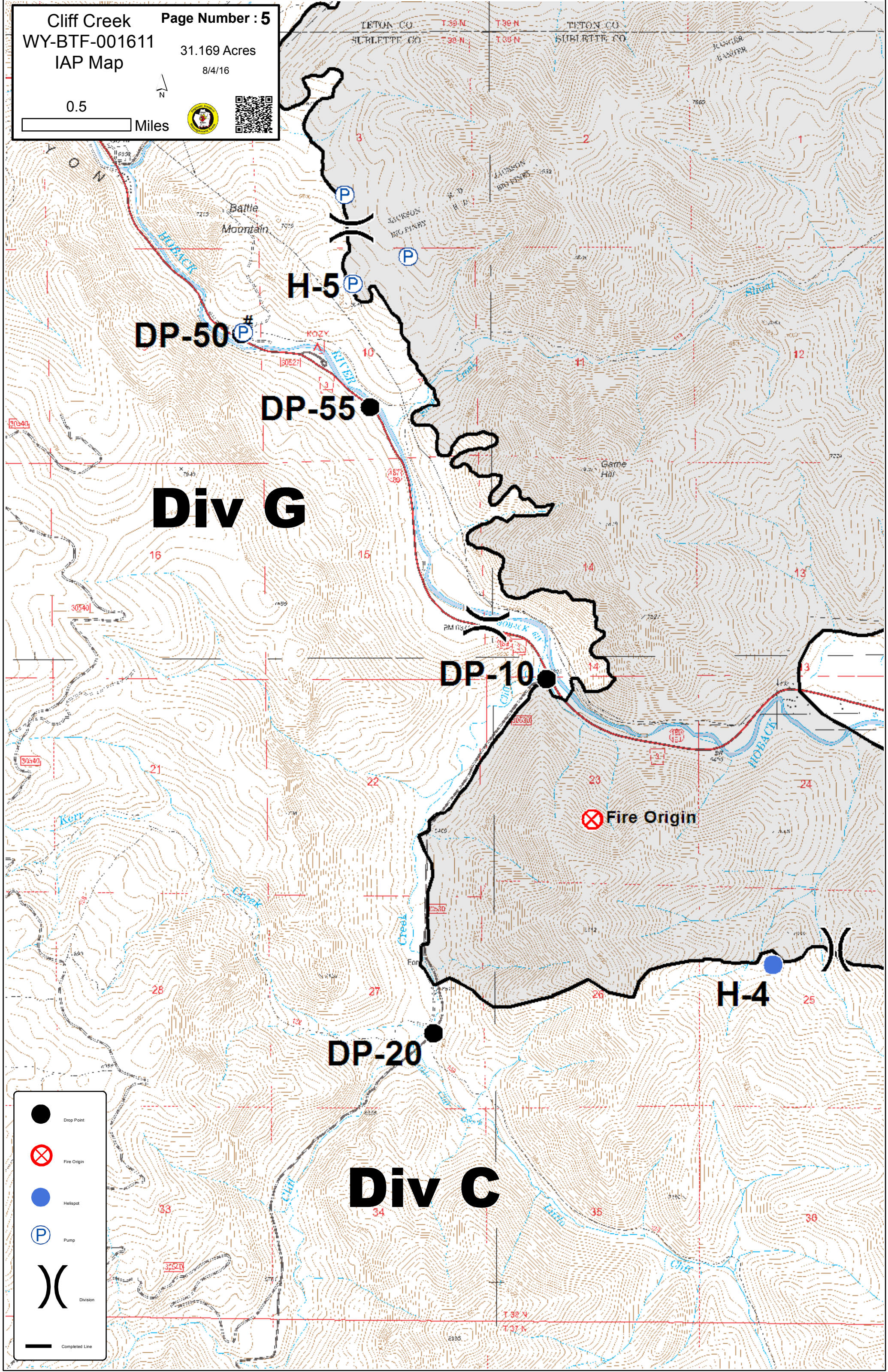
Page Number : 4
 31.169 Acres
 8/4/16

0.5 Miles

Div U





DP-50

DP-55

Div G






DP-10

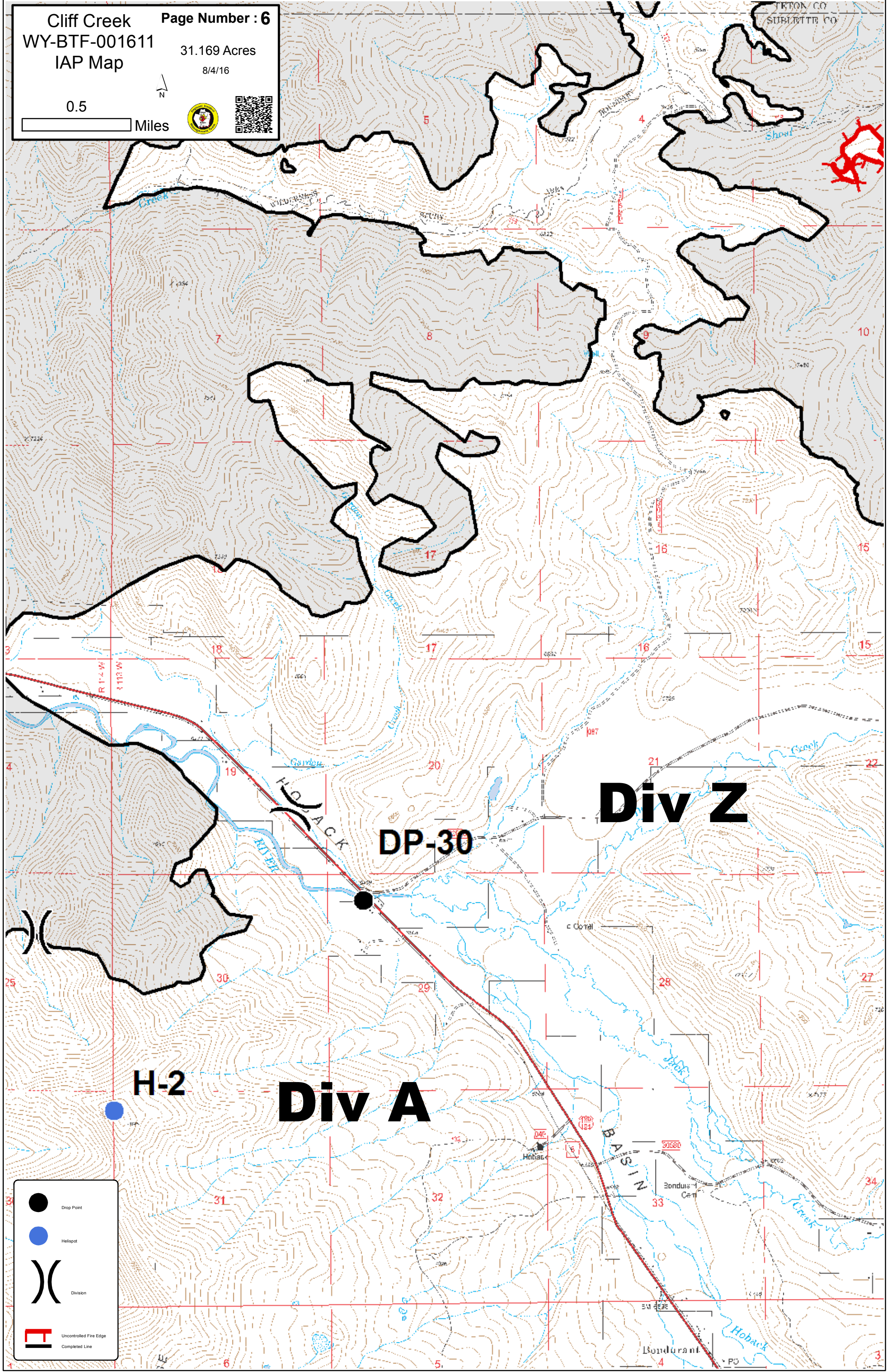
Fire Origin

DP-20

H-4

Div C

-  Drop Point
-  Fire Origin
-  Helispot
-  Pump
-  Division
-  Completed Line

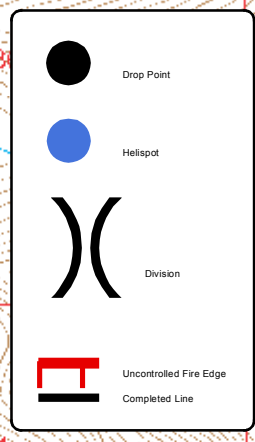


Div Z

DP-30

H-2


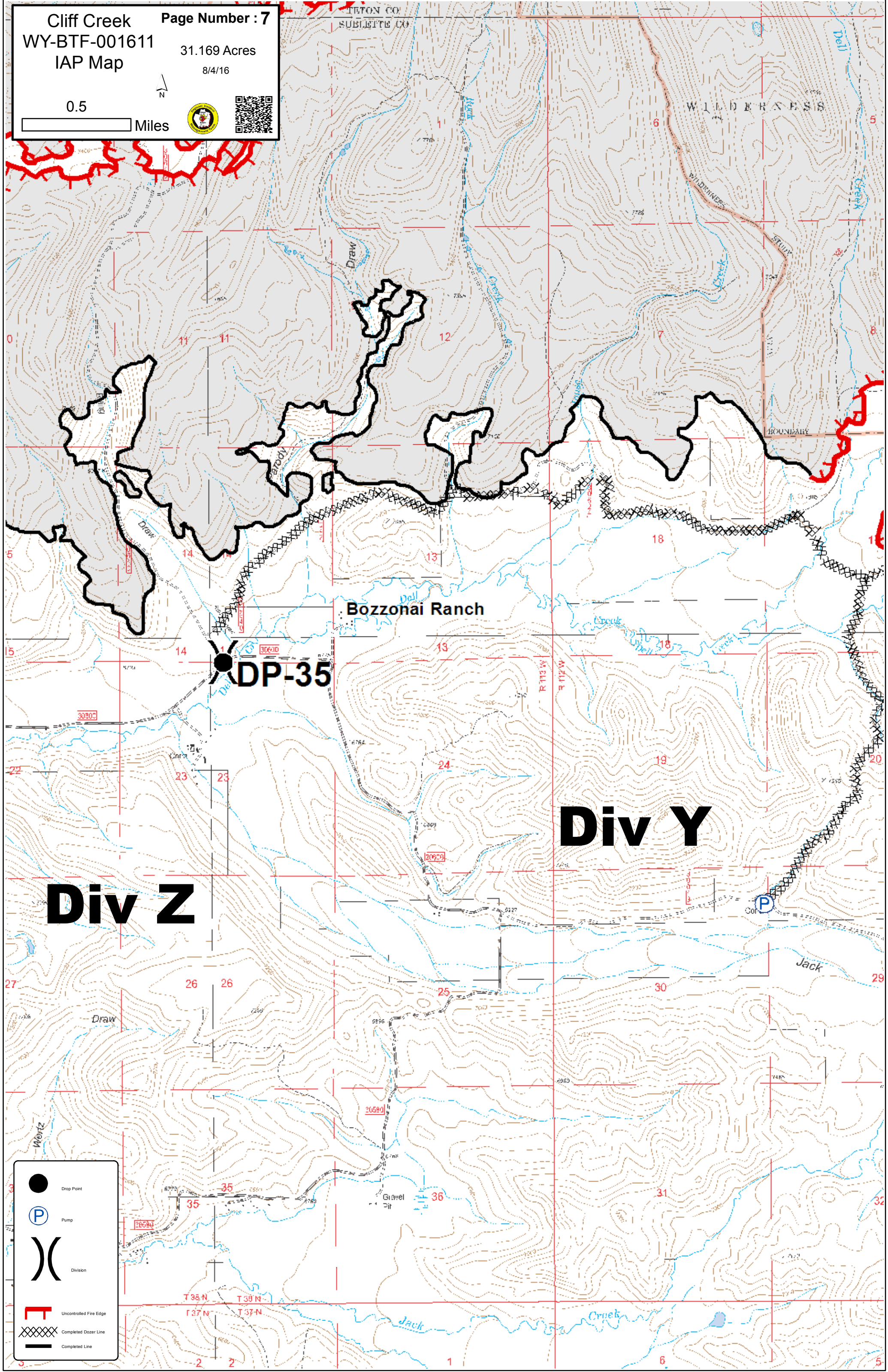
Div A



- Drop Point
- Helispot
- Division
- Uncontrolled Fire Edge
- Completed Line

Cliff Creek **Page Number : 7**
WY-BTF-001611 **31.169 Acres**
IAP Map **8/4/16**

0.5 Miles



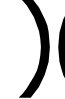






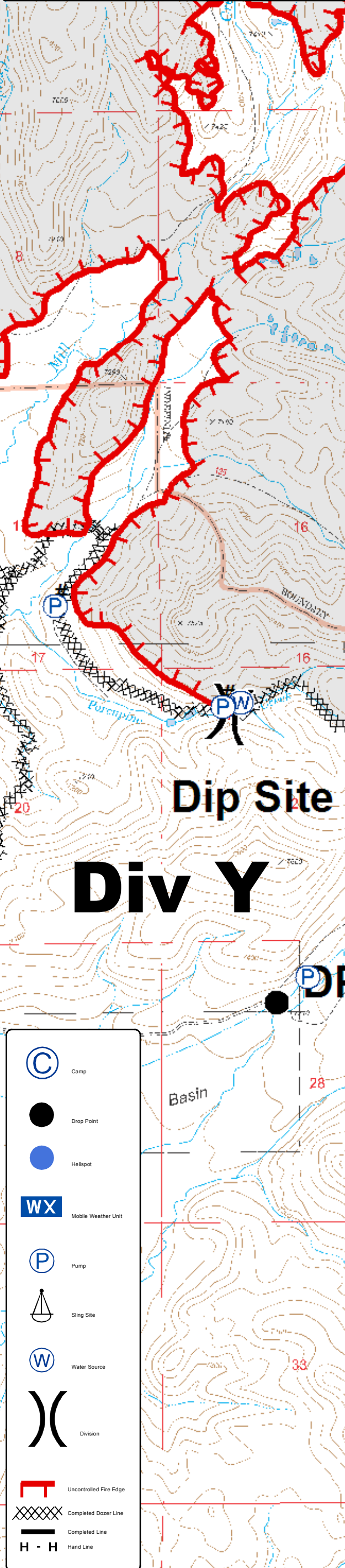
Div Z

Div Y

Bozzonai Ranch

DP-35

-  Drop Point
-  Pump
-  Division
-  Uncontrolled Fire Edge
-  Completed Dozer Line
-  Completed Line



Div U

H-10
Unicoi

H-7

H-8

Dip Site

Sling Site #1

Craig Cabin

Div Y

H-9

Craig Cabin Spike

DP-37

WX
IRAWS

- Camp
- Drop Point
- Helispot
- Mobile Weather Unit
- Pump
- Sling Site
- Water Source
- Division
- Uncontrolled Fire Edge
- Completed Dozer Line
- Completed Line
- Hand Line