
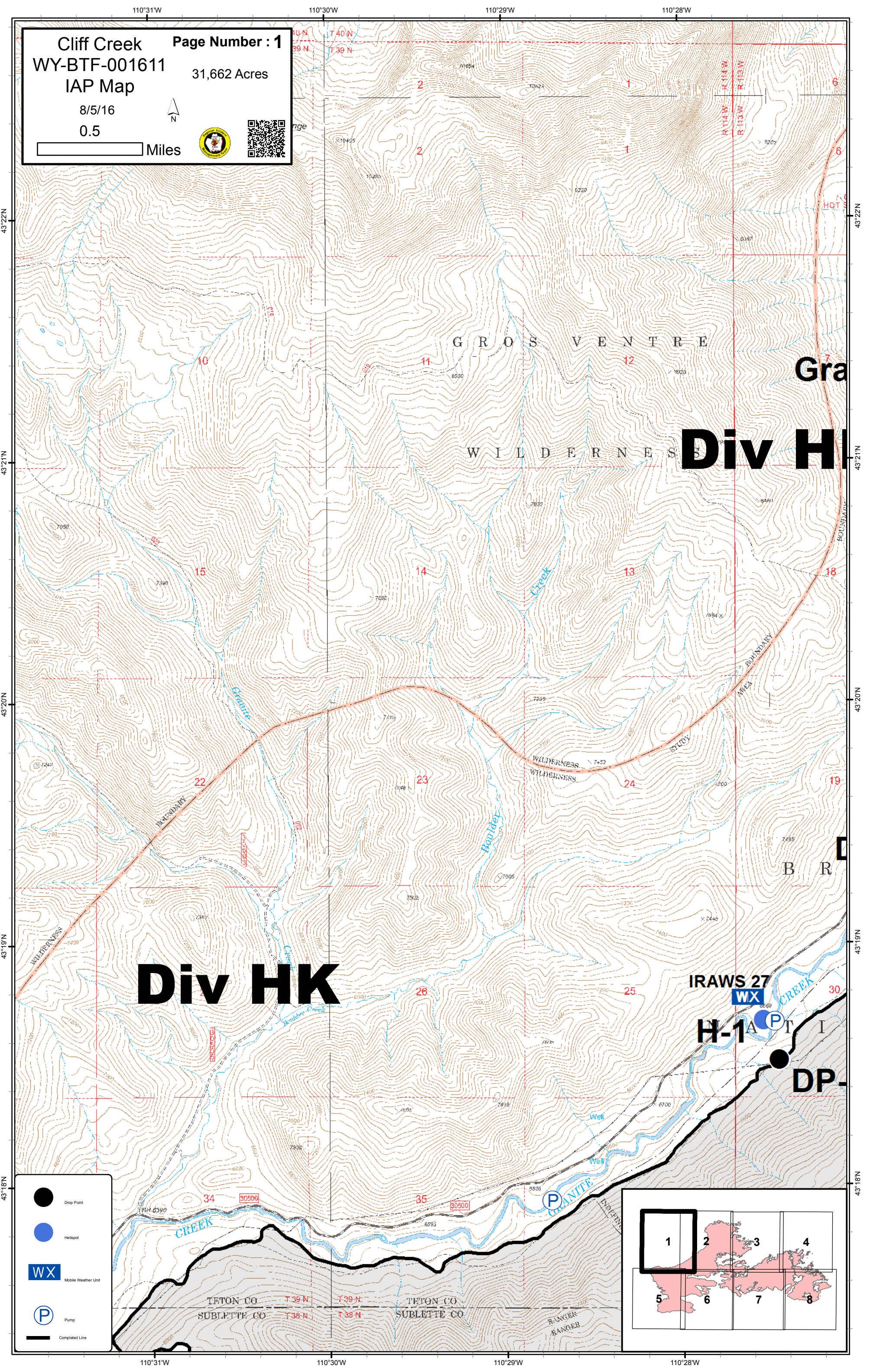


Cliff Creek
 WY-BTF-001611
 IAP Map
 8/5/16
 0.5 Miles

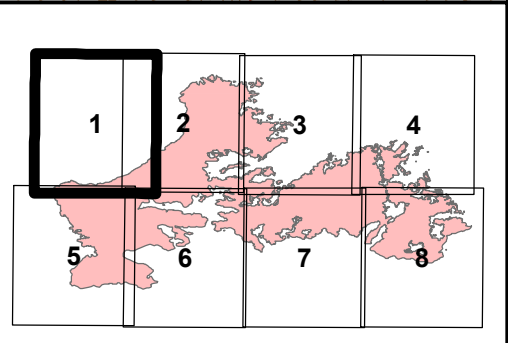
Page Number : 1
 31,662 Acres

Div HK

Div HI


-  Drop Point
-  Hellsport
-  Mobile Weather Unit
-  Pump
-  Completed Line



TETON CO T 39 N T 39 N TETON CO
 SUBLETTE CO T 38 N T 38 N SUBLETTE CO

RANGER
 BANGER

Cliff Creek Page Number : 2
 WY-BTF-001611 31,662 Acres
 IAP Map
 8/5/16
 0.5 Miles



Div U

Granite Spike

Div HK

H-3 Granite Snotel

H-6

DP-38

DP-40

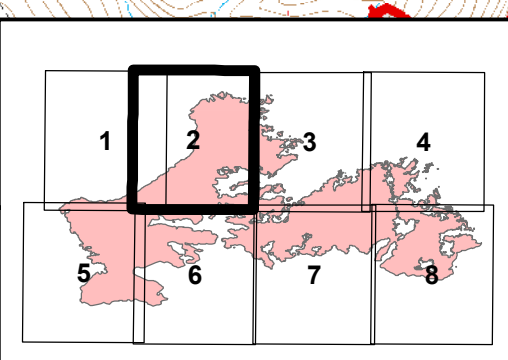
DP-42

IRAWS 27

H-1

DP-45

- Camp
- Division
- Drop Point
- Hellspot
- Mobile Weather Unit
- Pump
- Other
- Uncontrolled Fire Edge
- Completed Dozer Line
- Completed Line
- Hand Line


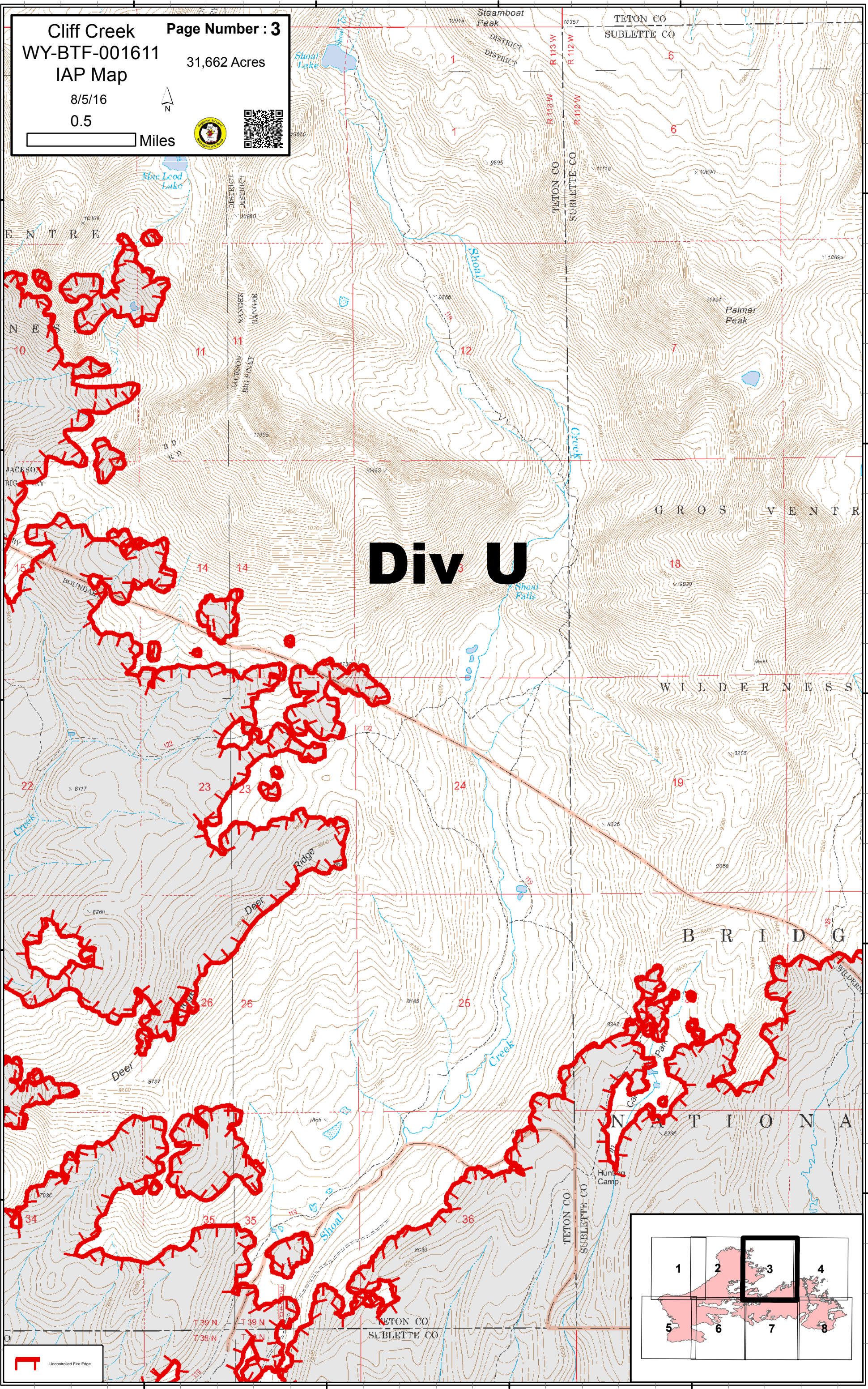


43°22'N
43°21'N
43°20'N
43°19'N
43°18'N

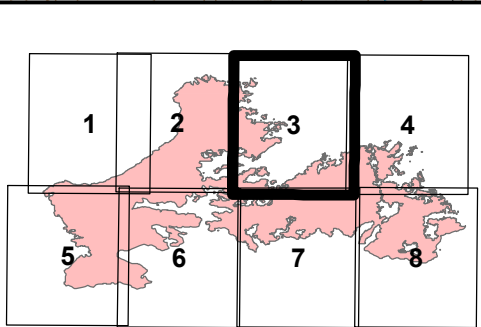
110°28'W
110°27'W
110°26'W
110°25'W
110°24'W

110°23'W 110°22'W 110°21'W 110°20'W

Cliff Creek **Page Number : 3**
WY-BTF-001611 **31,662 Acres**
IAP Map
 8/5/16
 0.5
 Miles

Div U




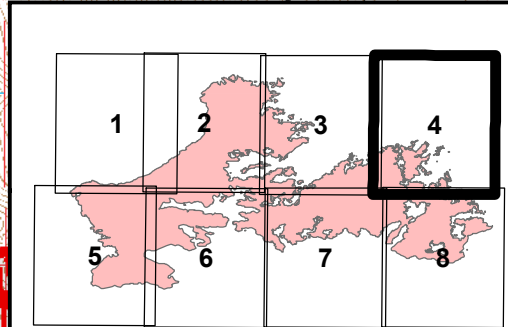
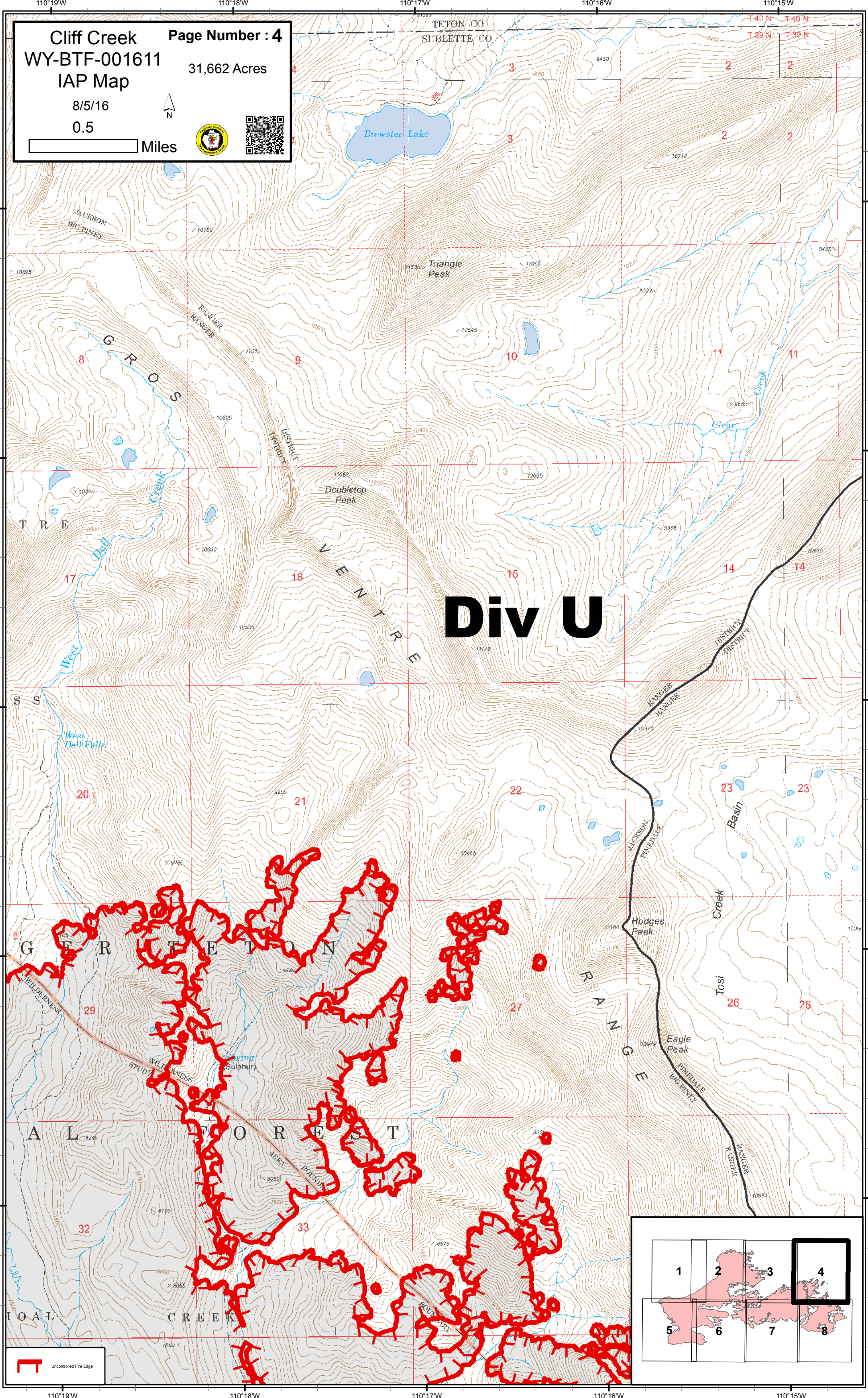
110°23'W 110°22'W 110°21'W 110°20'W

43°22'N
43°21'N
43°20'N
43°19'N
43°18'N

43°22'N
43°21'N
43°20'N
43°19'N
43°18'N

Cliff Creek
 WY-BTF-001611
 IAP Map
 8/5/16
 0.5
 Miles

Page Number : 4
 31,662 Acres


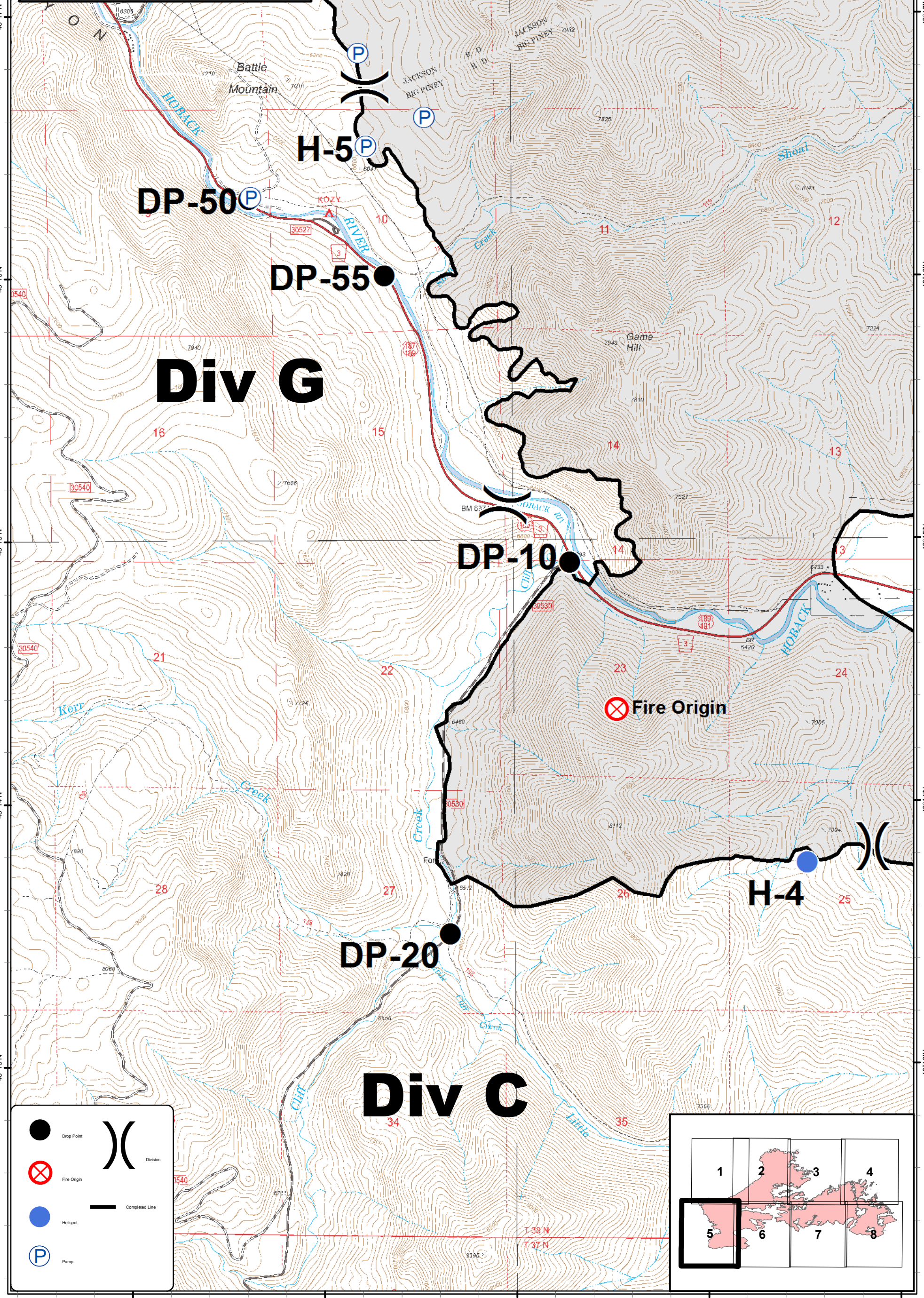
110°19'W 110°18'W 110°17'W 110°16'W 110°15'W






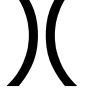
43°22'N 43°21'N 43°20'N 43°19'N 43°18'N

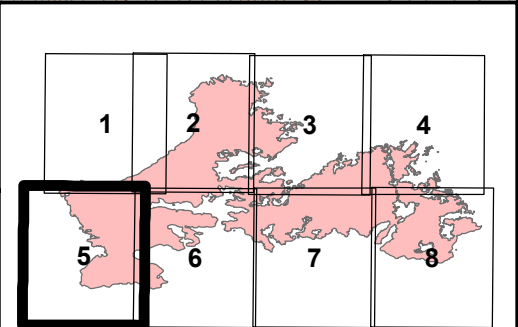
110°32'W 110°31'W 110°30'W 110°29'W 110°28'W

Cliff Creek
 WY-BTF-001611
 IAP Map
 8/5/16
 0.5 Miles

Page Number : 5
 31,662 Acres

-  Drop Point
-  Fire Origin
-  Hillspot
-  Pump
-  Completed Line
-  Division



110°32'W 110°31'W 110°30'W 110°29'W 110°28'W

110°28'W 110°27'W 110°26'W 110°25'W 110°24'W

Cliff Creek
WY-BTF-001611
IAP Map
8/5/16
0.5
Miles

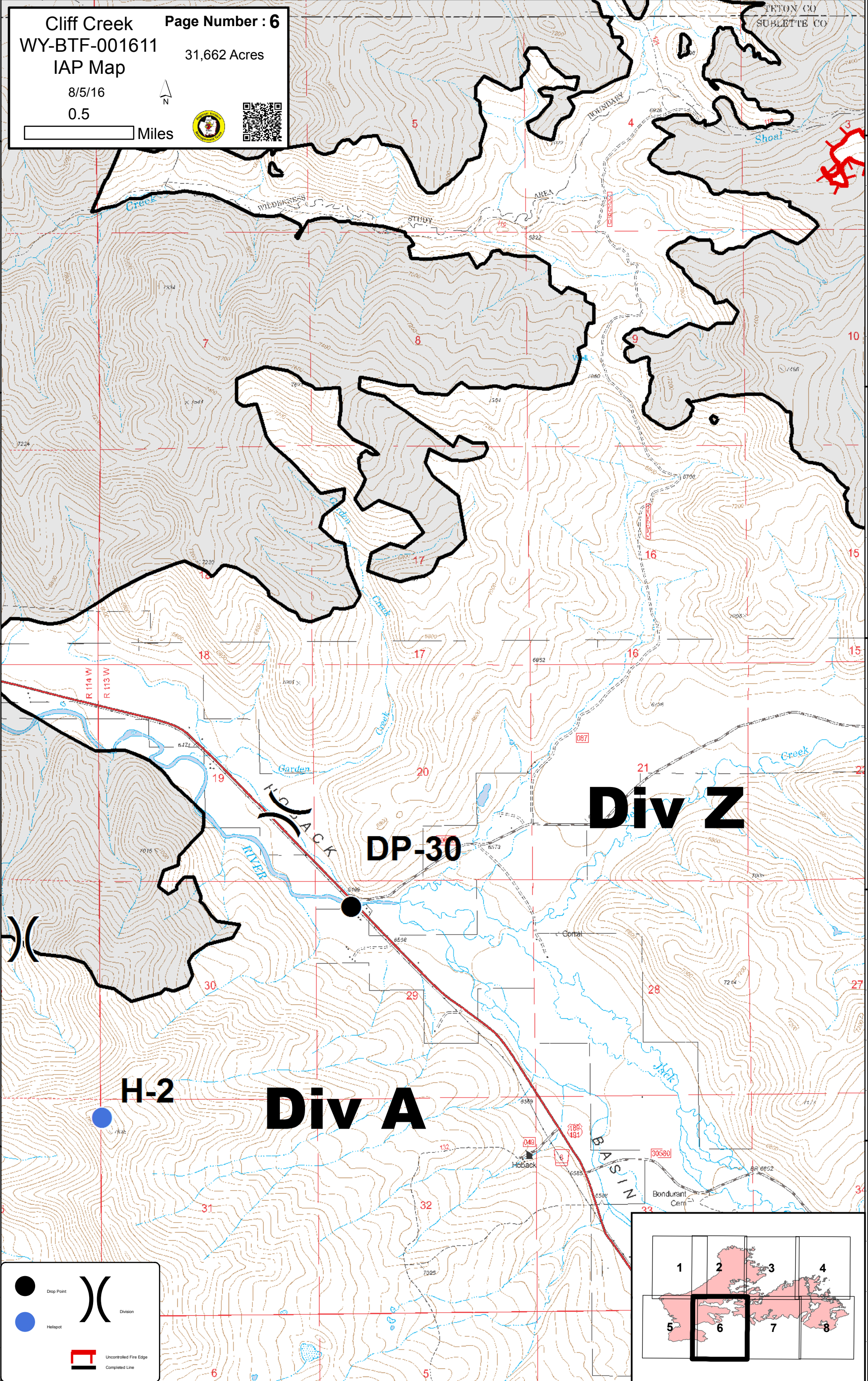
Page Number : 6
31,662 Acres



FRYON CO
SUBLETTE CO

43°17'N
43°16'N
43°15'N
43°14'N
43°13'N

43°17'N
43°16'N
43°15'N
43°14'N
43°13'N



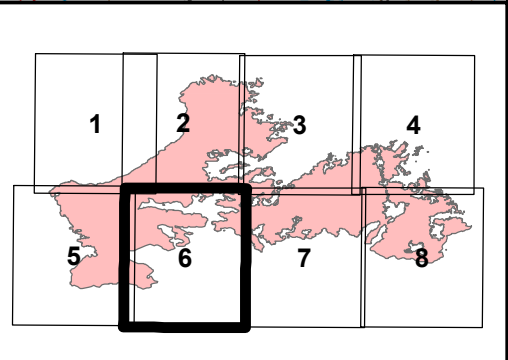
Div Z

DP-30

H-2

Div A

- Drop Point
- Helispot
- Division
- Uncontrolled Fire Edge
- Completed Line



110°28'W 110°27'W 110°26'W 110°25'W 110°24'W

110°23'W 110°22'W 110°21'W 110°20'W 110°19'W

Cliff Creek
WY-BTF-001611
IAP Map

Page Number : 7
31,662 Acres

8/5/16

0.5

Miles



43°17'N

43°16'N

43°15'N

43°14'N

43°13'N

43°17'N

43°16'N

43°15'N

43°14'N

43°13'N

NETON CO
SUBLETTE CO

WILDERNESS

Bozzonai Ranch

DP-35

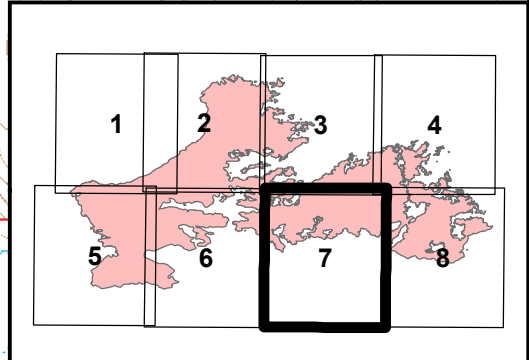
Div Y

Div Z

Jack

P

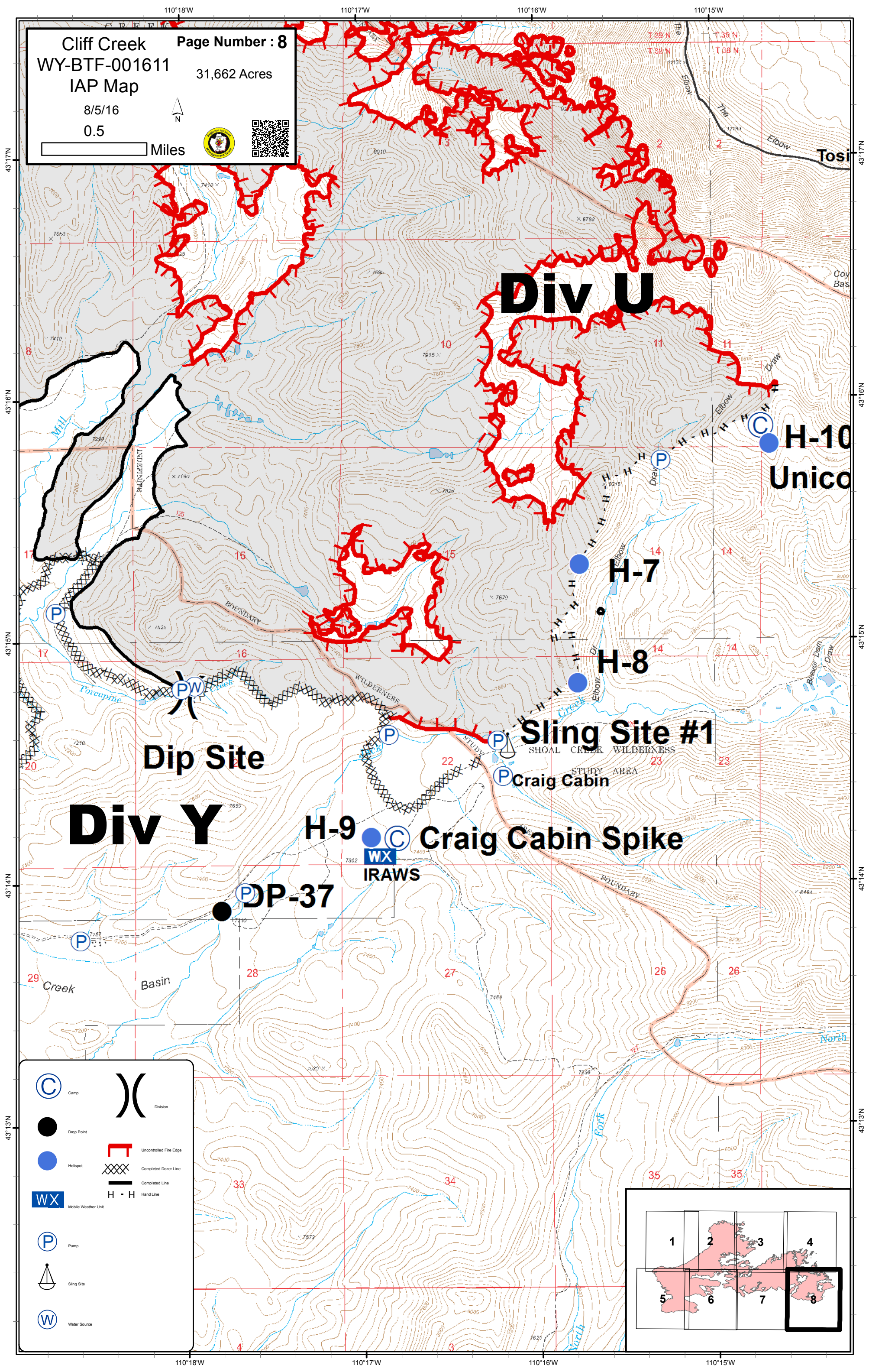
- Drop Point
- Pump
- Division
- Uncontrolled Fire Edge
- Completed Dozer Line
- Completed Line



110°23'W 110°22'W 110°21'W 110°20'W 110°19'W

Cliff Creek
 WY-BTF-001611
 IAP Map
 8/5/16
 0.5
 Miles

Page Number : 8
 31,662 Acres



Div U

H-10
Unico

H-7

H-8

Sling Site #1

Craig Cabin

H-9 **Craig Cabin Spike**

IRAWS

DP-37

Dip Site

Div Y

