
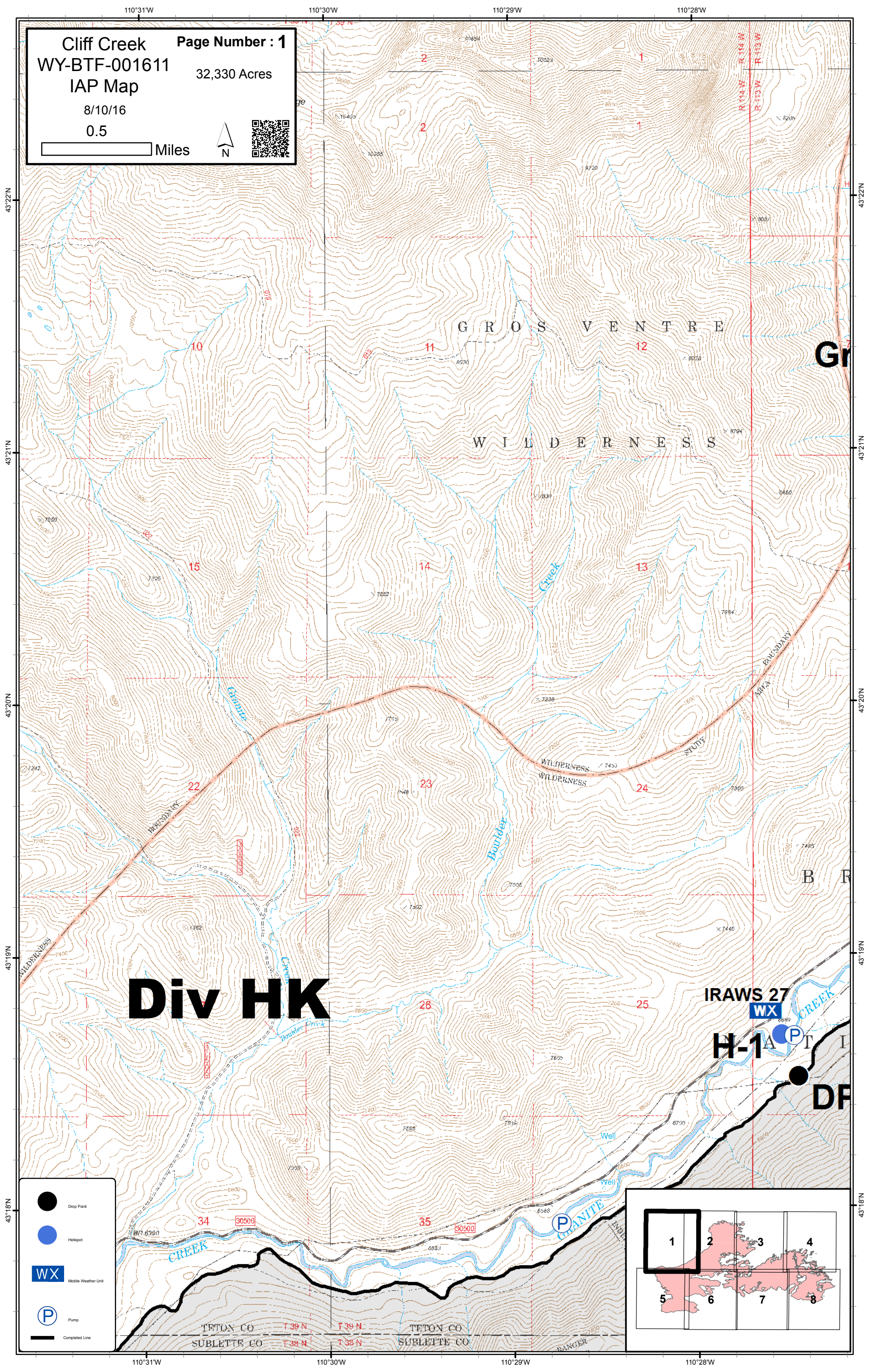


Cliff Creek
 WY-BTF-001611
 IAP Map
 8/10/16
 0.5 Miles

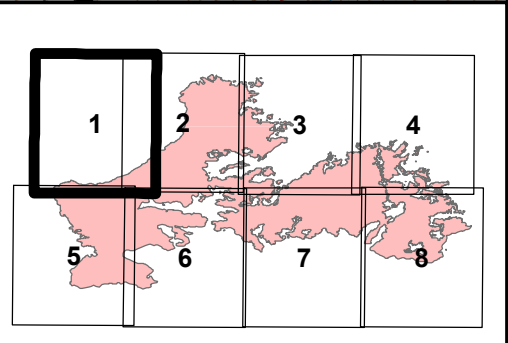
Page Number : 1
 32,330 Acres


Div HK

IRAWS 27
WX
H-1A
DF

-  Drop Point
-  Heliport
-  Mobile Weather Unit
-  Pump
-  Completed Line



Cliff Creek Page Number : 2
 WY-BTF-001611 32,330 Acres
 IAP Map
 8/10/16
 0.5 Miles



Granite Spike

H-3

IRAWS 30 Granite Snotel

H-6

DP-38

DP-40

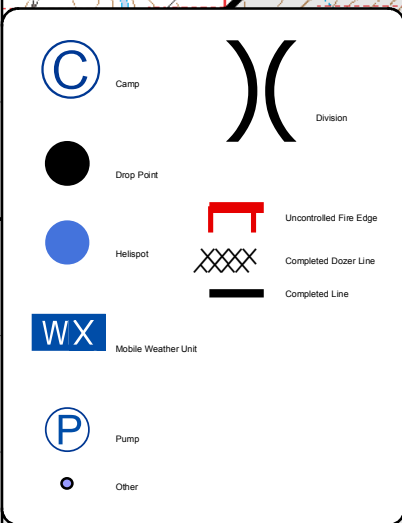
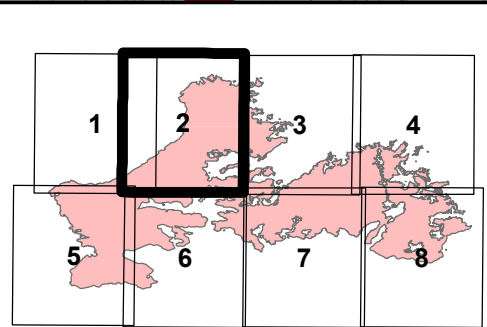
Mile Ranch

DP-42

IRAWS 27


H-1

DP-45

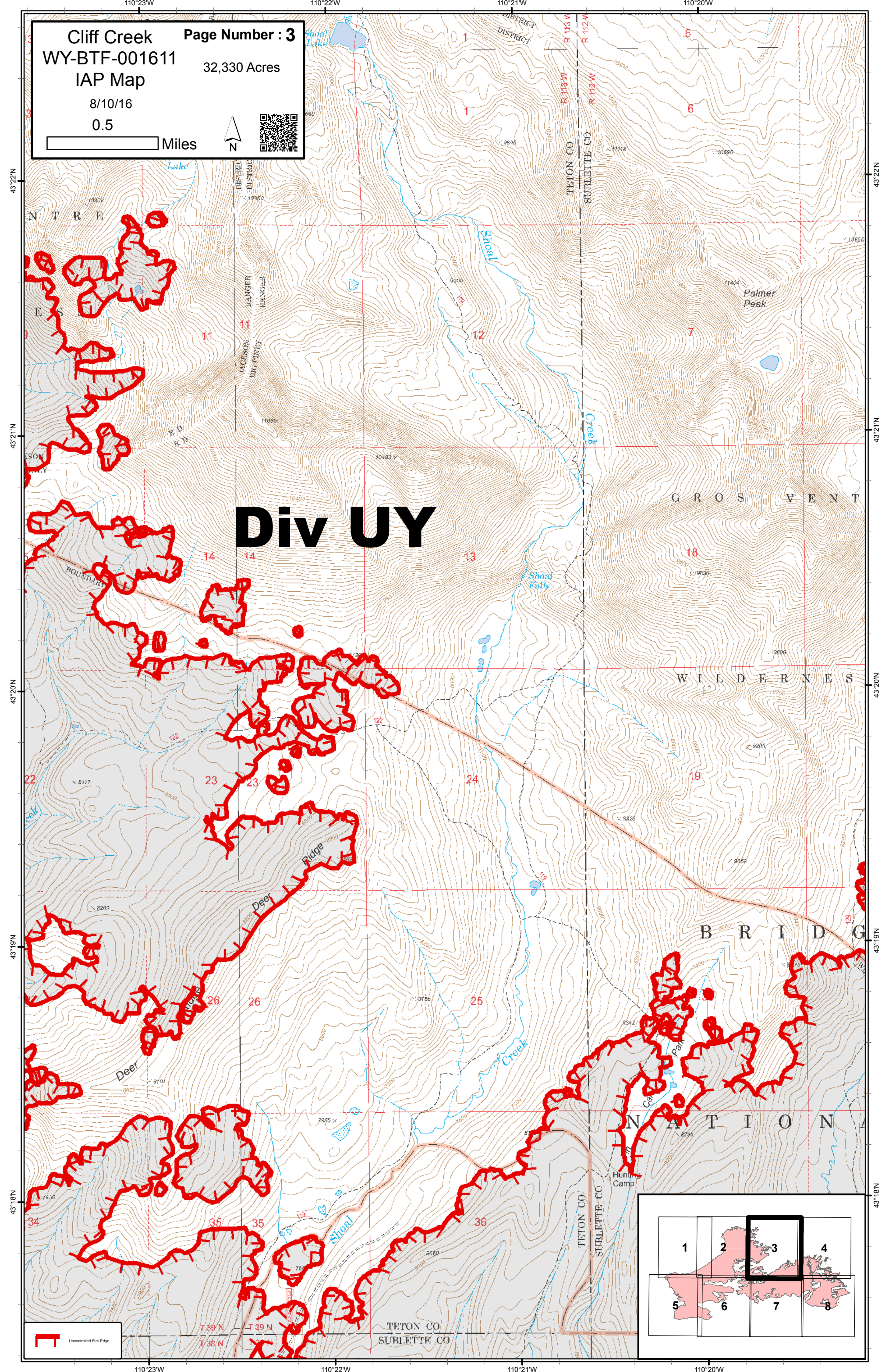
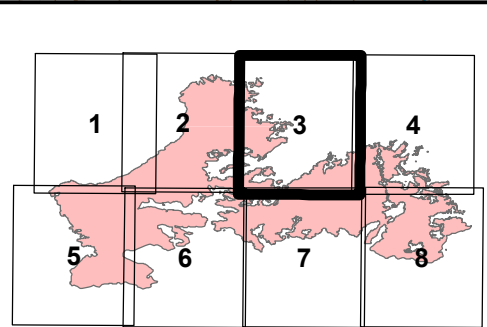



Cliff Creek
 WY-BTF-001611
 IAP Map
 8/10/16
 0.5 Miles

Page Number : 3
 32,330 Acres


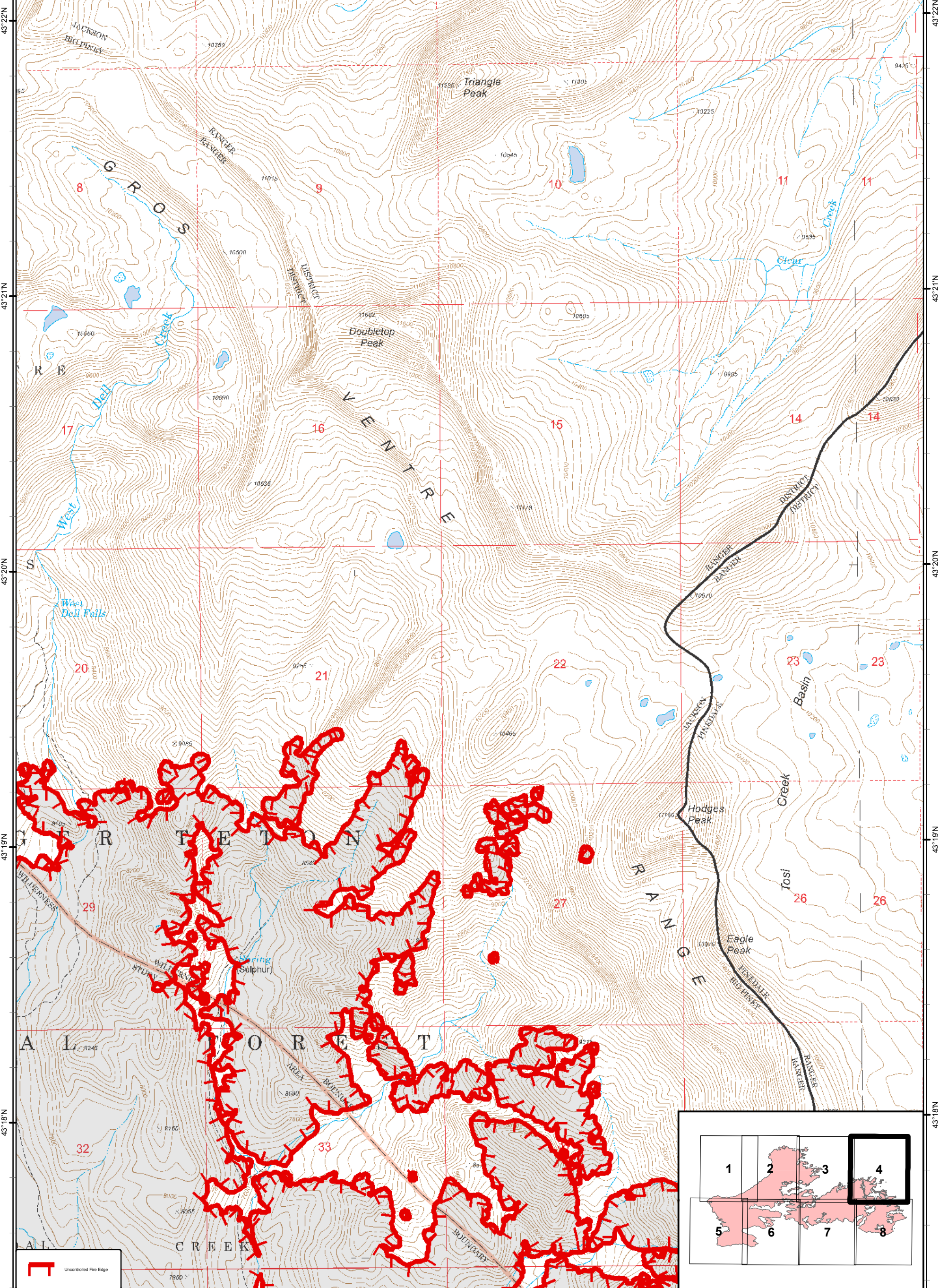


Div UY

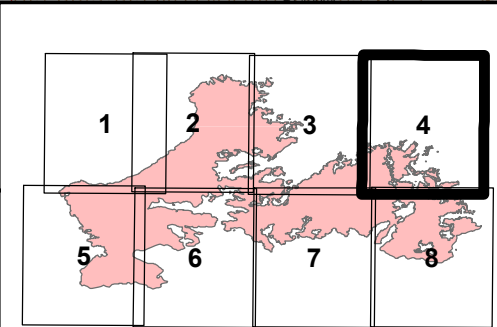


110°19'W 110°18'W 110°17'W 110°16'W 110°15'W

Cliff Creek Page Number : **4**
WY-BTF-001611 32,330 Acres
IAP Map
 8/10/16
 0.5 Miles

 Uncontrolled Fire Edge



110°19'W 110°18'W 110°17'W 110°16'W 110°15'W

Cliff Creek
WY-BTF-001611
IAP Map
8/10/16
0.5
Miles

Page Number : 5
32,330 Acres



43°17'N

43°17'N

43°16'N

43°16'N

43°15'N

43°15'N

43°14'N

43°14'N

43°13'N

43°13'N

Div G

Div C

DP-50

DP-55

DP-10

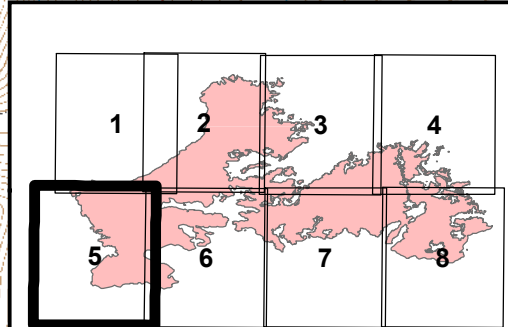
DP-20

H-5

H-4


Fire Origin

- Deep Point
- ⊗ Fire Origin
- Heliport
- Ⓟ Pump
-)(Division
- Completed Line



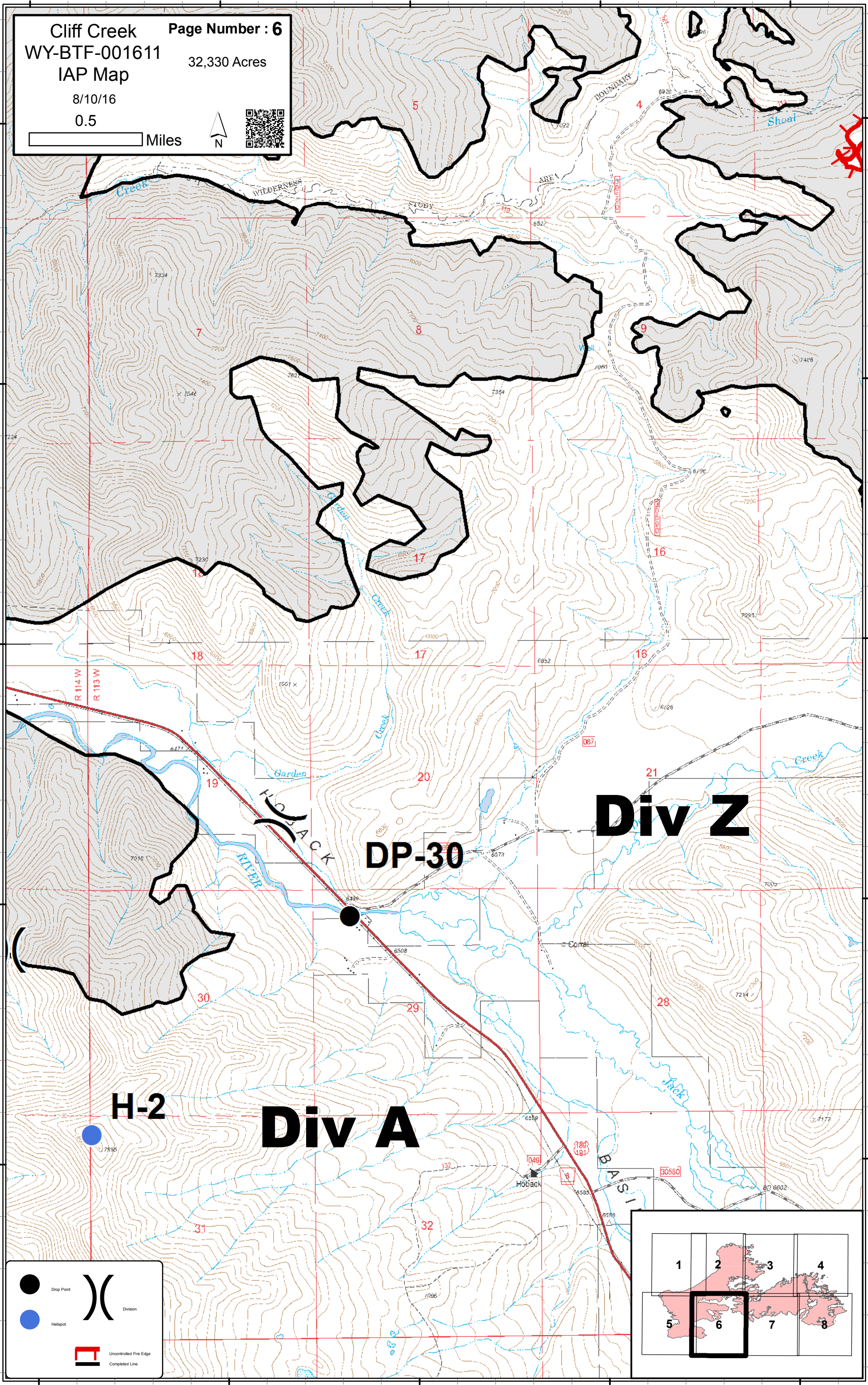
110°28'W 110°27'W 110°26'W 110°25'W 110°24'W

Cliff Creek **Page Number : 6**
WY-BTF-001611 **32,330 Acres**
IAP Map
 8/10/16
 0.5 Miles



43°17'N
43°16'N
43°15'N
43°14'N
43°13'N

43°17'N
43°16'N
43°15'N
43°14'N
43°13'N



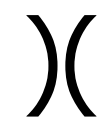



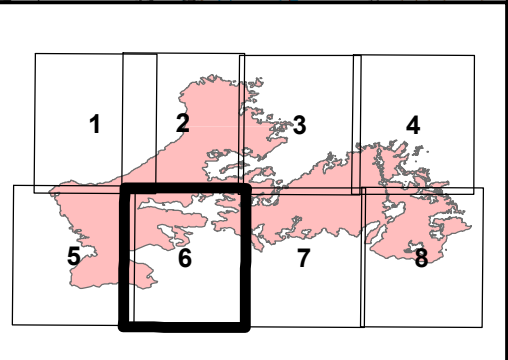
Div Z

DP-30

Div A

H-2

-  Drop Point
-  Helispot
-  Division
-  Uncontrolled Fire Edge Completed Line



110°28'W 110°27'W 110°26'W 110°25'W 110°24'W

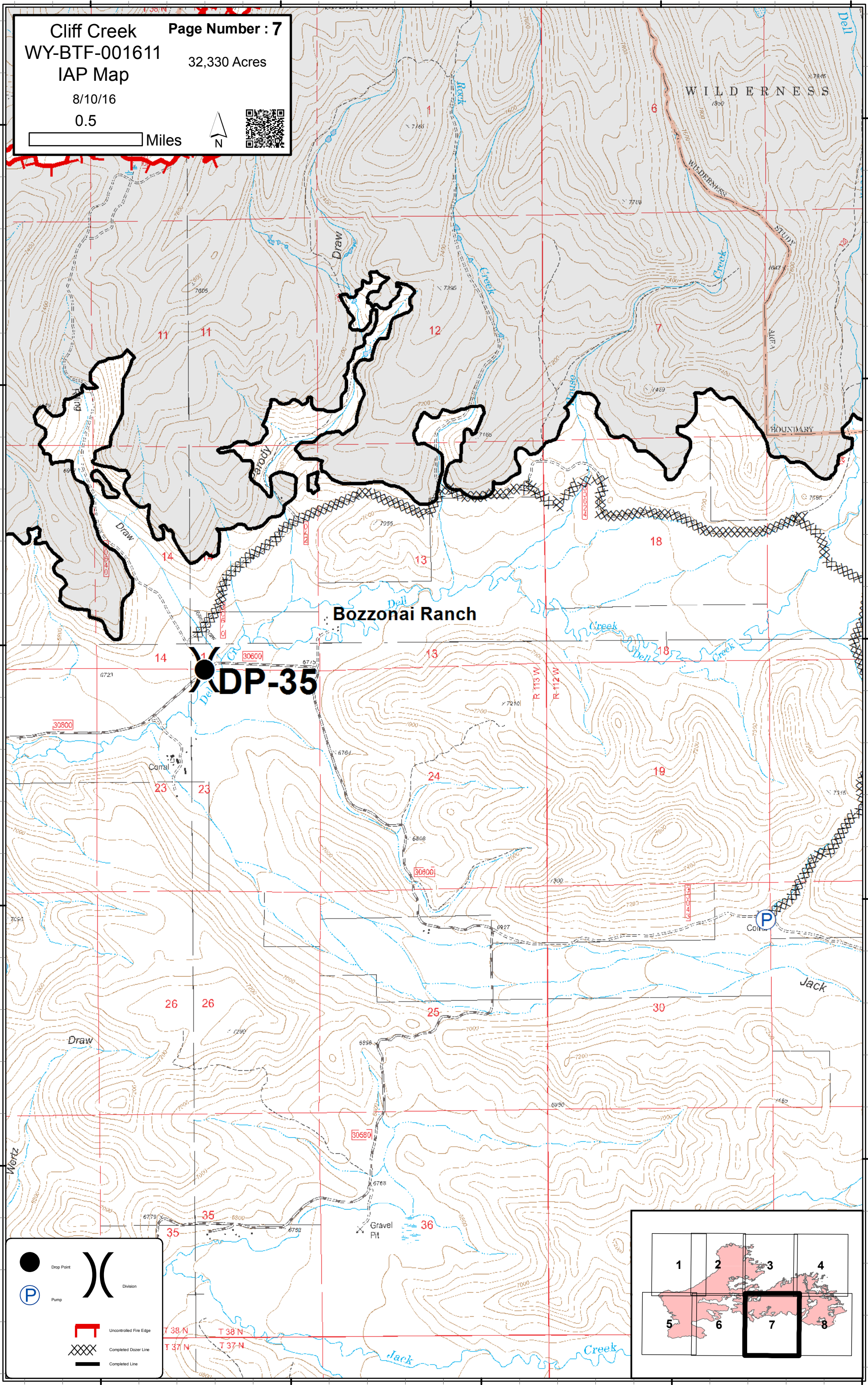
110°23'W 110°22'W 110°21'W 110°20'W 110°19'W

Cliff Creek Page Number : 7
WY-BTF-001611 32,330 Acres
IAP Map
8/10/16
0.5 Miles



43°17'N
43°16'N
43°15'N
43°14'N
43°13'N

43°17'N
43°16'N
43°15'N
43°14'N
43°13'N



Bozzonai Ranch

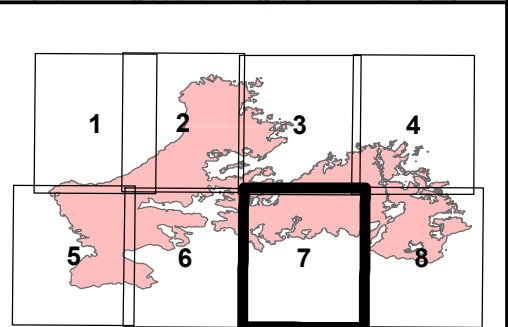
DP-35

Cornal

Col. P

Gravel Pit

- Drop Point
- Pump
- Division
- Uncontrolled Fire Edge
- Completed Dozer Line
- Completed Line



110°23'W 110°22'W 110°21'W 110°20'W 110°19'W

Cliff Creek
 WY-BTF-001611
 IAP Map
 8/10/16
 0.5 Miles

Page Number : 8
 32,330 Acres

