

30' 110°28'30"W 110°27'0"W 110°25'30"W 110°24'0"W 110°22'30"W 110°21'0"W 110°19'30"W

43°18'0"N

43°18'0"N

43°16'30"N

43°16'30"N

15'

15'

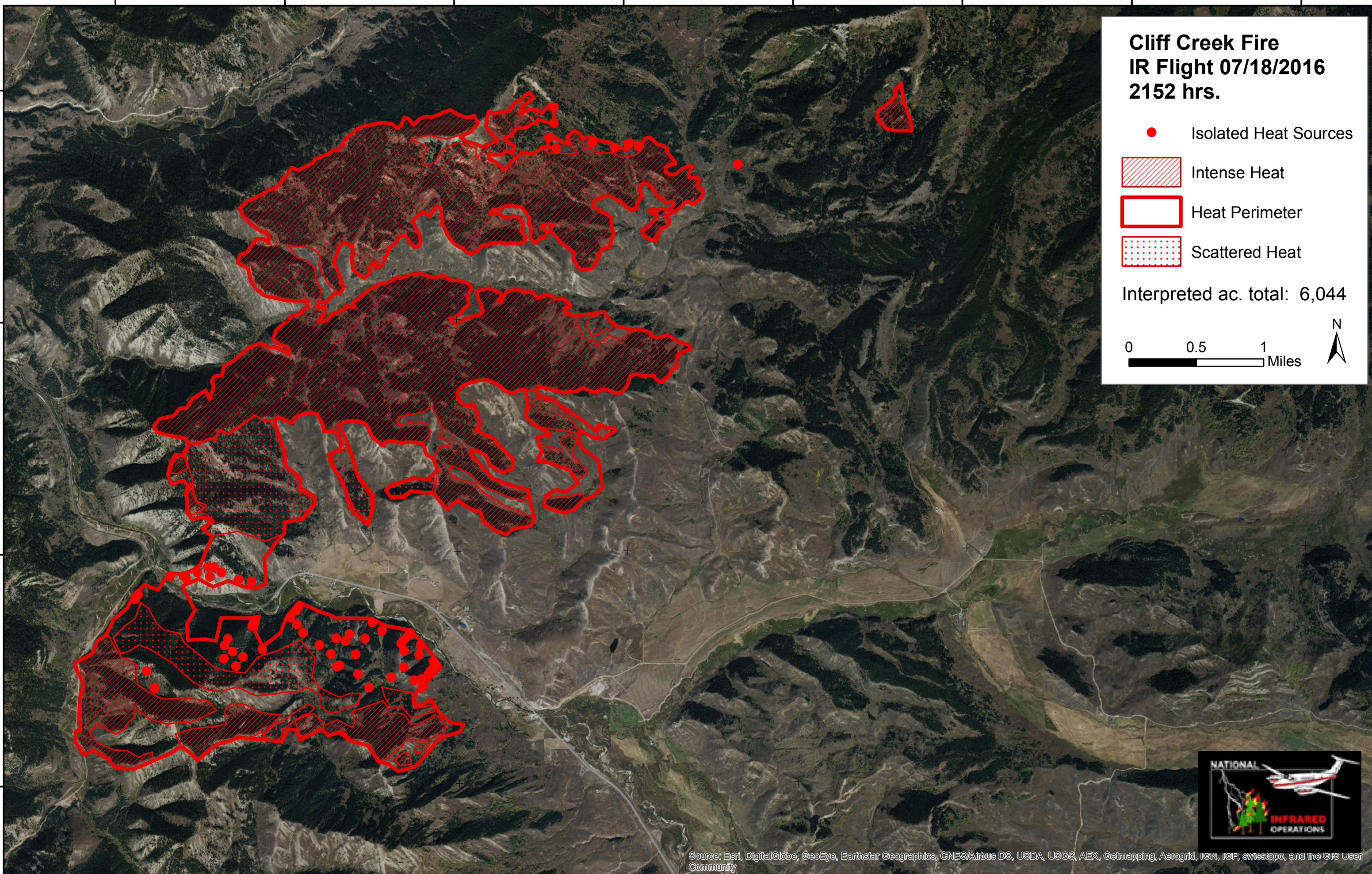
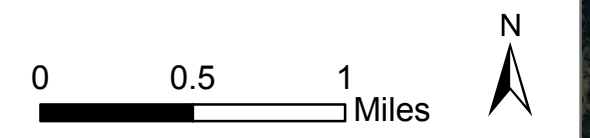
43°13'30"N

43°13'30"N

Cliff Creek Fire IR Flight 07/18/2016 2152 hrs.

- Isolated Heat Sources
- Intense Heat
- Heat Perimeter
- Scattered Heat

Interpreted ac. total: 6,044



Source: Esri, DigitalGlobe, GeoEye, Earthstar Geographics, CNES/Airbus DS, USDA, USGS, AEX, Getmapping, Aerogrid, IGN, IGP, swisstopo, and the GIS User Community

30' 110°28'30"W 110°27'0"W 110°25'30"W 110°24'0"W 110°22'30"W 110°21'0"W 110°19'30"W