

30' 110°28'30"W 110°27'0"W 110°25'30"W 110°24'0"W 110°22'30"W 110°21'0"W 110°19'30"W

43°18'0"N

43°16'30"N

15'

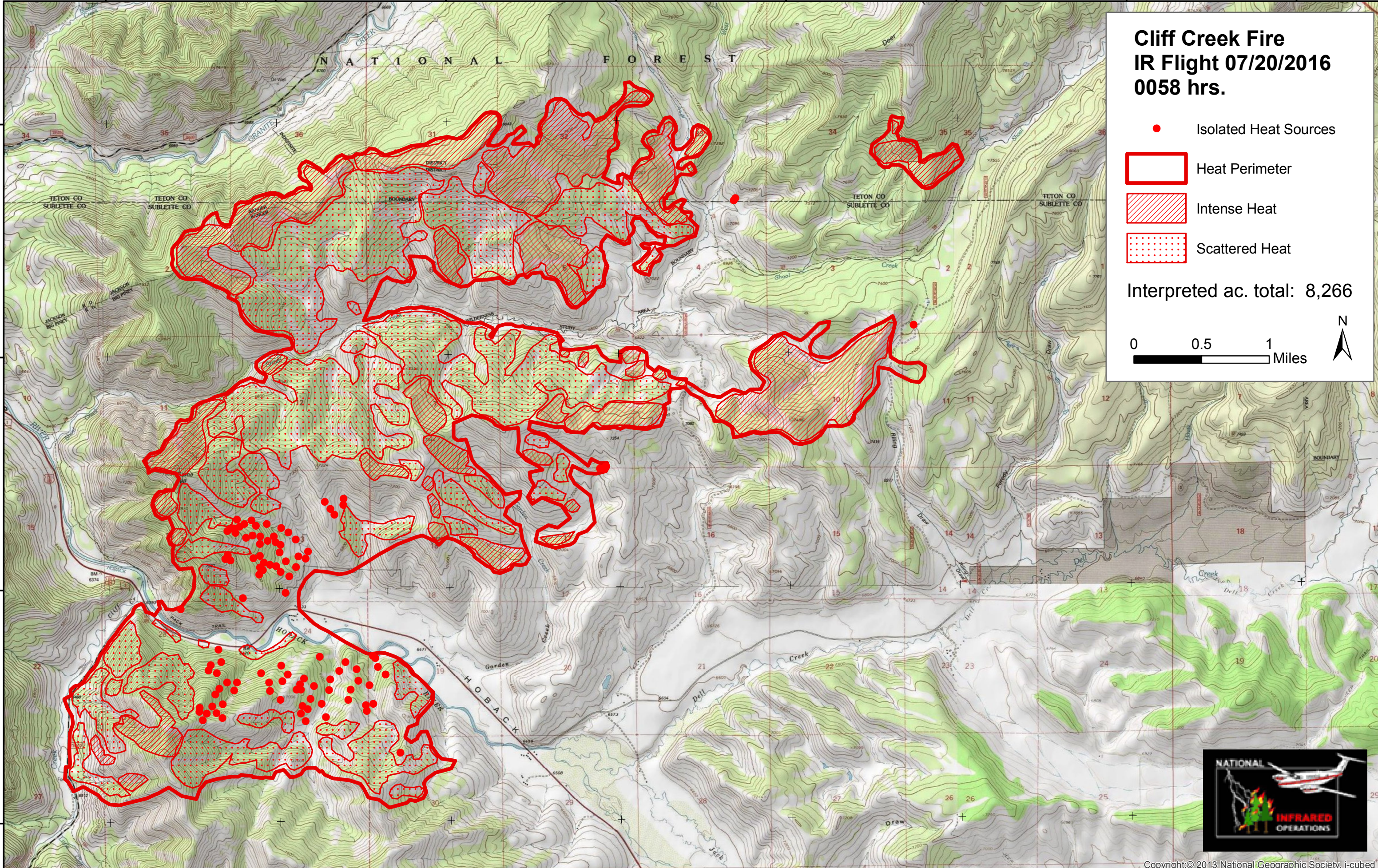
43°13'30"N

43°18'0"N

43°16'30"N

15'

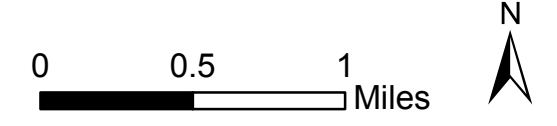
43°13'30"N



Cliff Creek Fire IR Flight 07/20/2016 0058 hrs.

- Isolated Heat Sources
- Heat Perimeter
- Intense Heat
- Scattered Heat

Interpreted ac. total: 8,266



30' 110°28'30"W 110°27'0"W 110°25'30"W 110°24'0"W 110°22'30"W 110°21'0"W 110°19'30"W