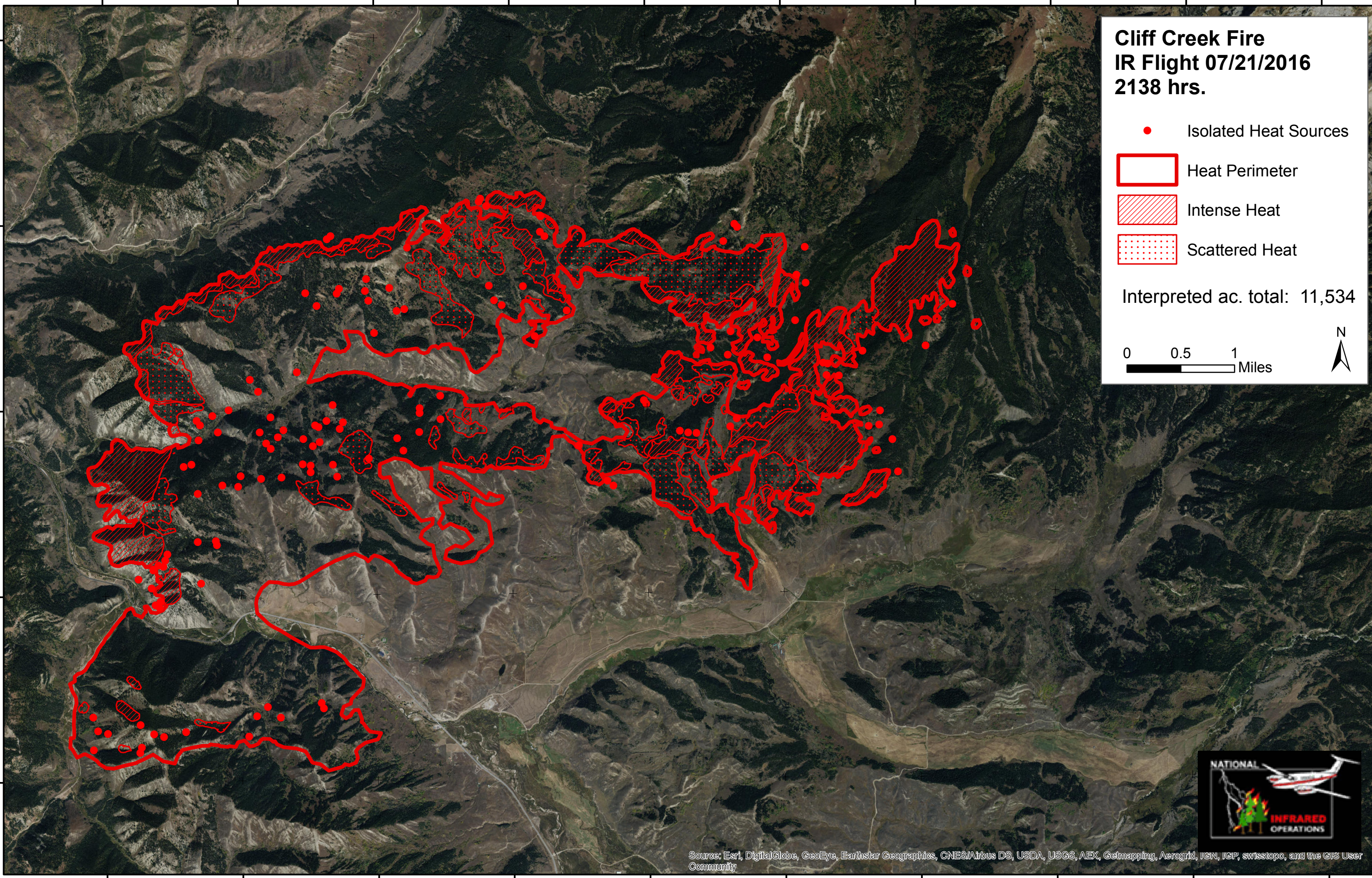


**Cliff Creek Fire
IR Flight 07/21/2016
2138 hrs.**

- Isolated Heat Sources
- Heat Perimeter
- Intense Heat
- Scattered Heat

Interpreted ac. total: 11,534

0 0.5 1 Miles



110°30'0"W 110°28'30"W 110°27'0"W 110°25'30"W 110°24'0"W 110°22'30"W 110°21'0"W 110°19'30"W 110°18'0"W 110°16'30"W

43°19'30"N 43°18'0"N 43°16'30"N 43°15'0"N 43°13'30"N

30' 110°28'30"W 110°27'0"W 110°25'30"W 110°24'0"W 110°22'30"W 110°21'0"W 110°19'30"W 110°18'0"W 110°16'30"W

Source: Esri, DigitalGlobe, GeoEye, Earthstar Geographics, CNES/Airbus DS, USDA, USGS, AEX, Getmapping, Aerogrid, IGN, IGP, swisstopo, and the GIS User Community

