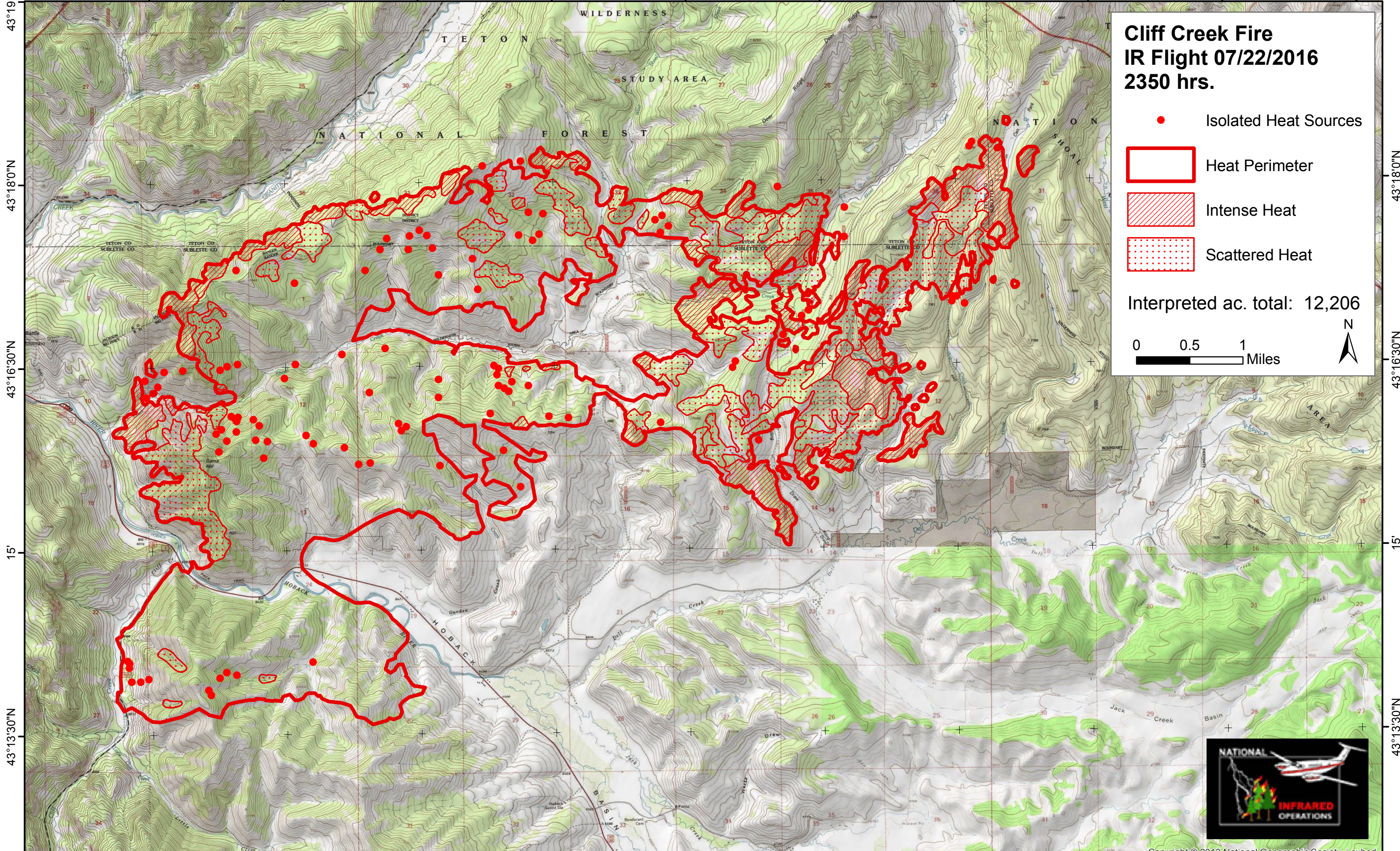


30' 110°28'30"W 110°27'0"W 110°25'30"W 110°24'0"W 110°22'30"W 110°21'0"W 110°19'30"W 110°18'0"W 110°16'30"W




**Cliff Creek Fire**  
**IR Flight 07/22/2016**  
**2350 hrs.**

- Isolated Heat Sources
- Heat Perimeter
- Intense Heat
- Scattered Heat

Interpreted ac. total: 12,206

0 0.5 1 Miles

N



43°19'30"N  
43°18'0"N  
43°16'30"N  
15'  
43°13'30"N

43°19'30"N  
43°18'0"N  
43°16'30"N  
15'  
43°13'30"N

30' 110°28'30"W 110°27'0"W 110°25'30"W 110°24'0"W 110°22'30"W 110°21'0"W 110°19'30"W 110°18'0"W 110°16'30"W

