

110°31'30"W 30' 110°28'30"W 110°27'0"W 110°25'30"W 110°24'0"W 110°22'30"W 110°21'0"W 110°19'30"W 110°18'0"W 110°16'30"W 15' 110°13'30"W 110°12'0"W

43°21'0"N
43°19'30"N
43°18'0"N
43°16'30"N
15'
43°13'30"N

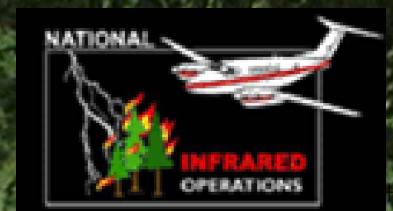
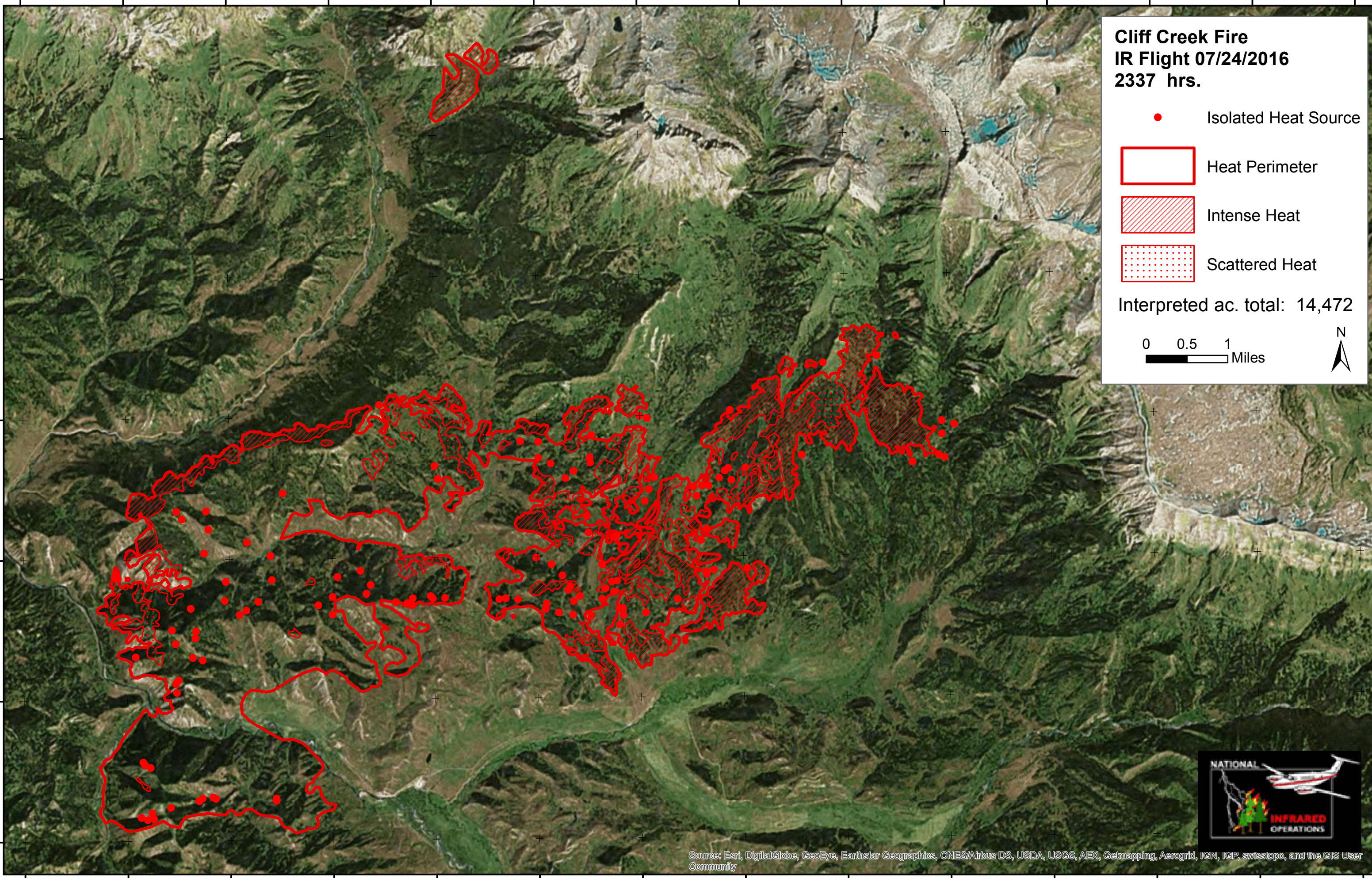
43°21'0"N
43°19'30"N
43°18'0"N
43°16'30"N
15'
43°13'30"N

Cliff Creek Fire
IR Flight 07/24/2016
2337 hrs.

- Isolated Heat Source
- Heat Perimeter
- Intense Heat
- Scattered Heat

Interpreted ac. total: 14,472

0 0.5 1 Miles



Source: Esri, DigitalGlobe, GeoEye, Earthstar Geographics, CNES/Airbus DS, USDA, USGS, AEX, Getmapping, Aerogrid, IGN, IGP, swisstopo, and the GIS User Community