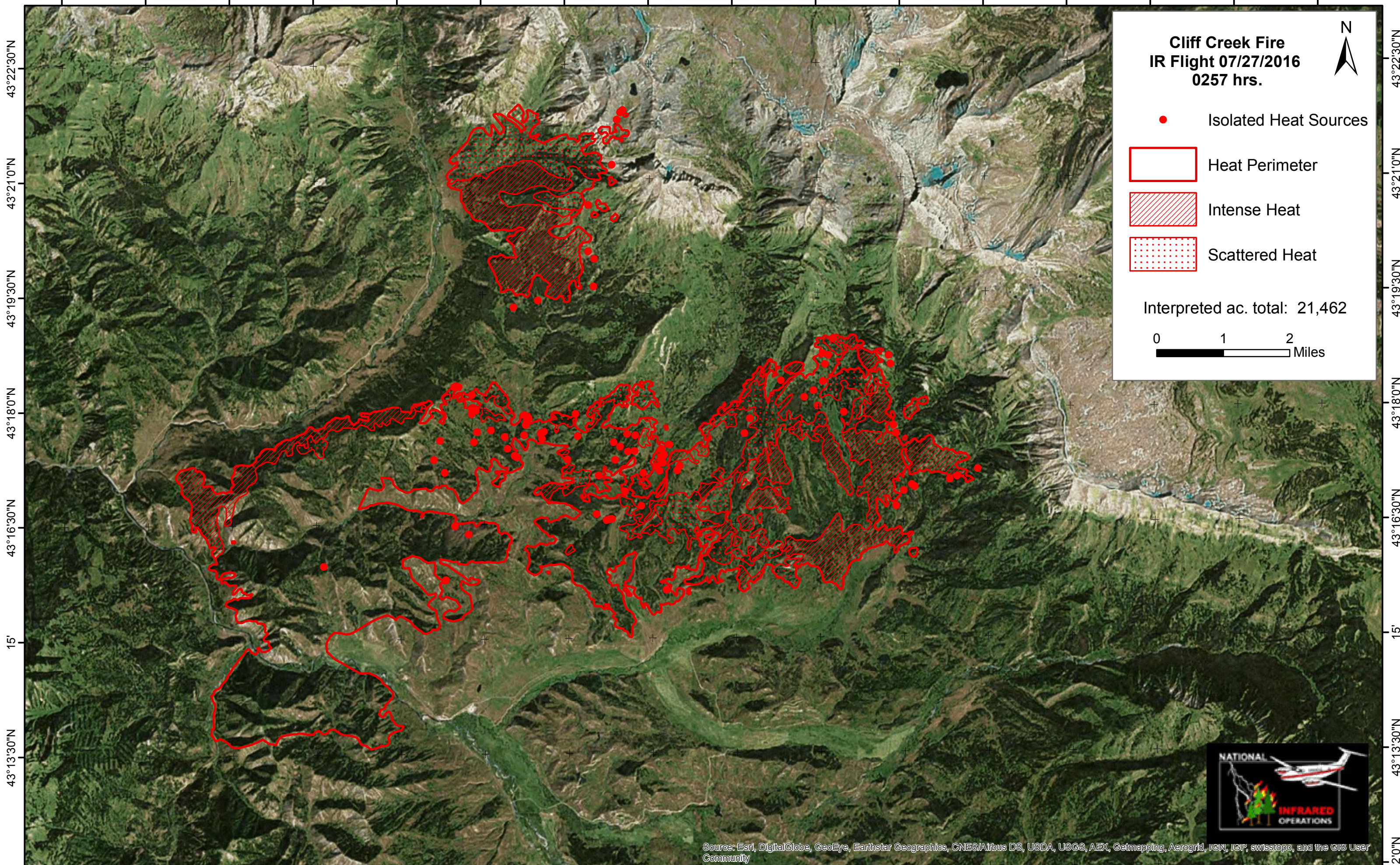


110°33'0"W 110°31'30"W 30' 110°28'30"W 110°27'0"W 110°25'30"W 110°24'0"W 110°22'30"W 110°21'0"W 110°19'30"W 110°18'0"W 110°16'30"W 15' 110°13'30"W 110°12'0"W 110°10'30"W



**Cliff Creek Fire
IR Flight 07/27/2016
0257 hrs.**

● Isolated Heat Sources

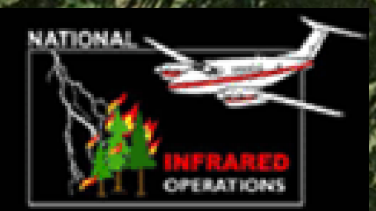
□ Heat Perimeter

▨ Intense Heat

▤ Scattered Heat

Interpreted ac. total: 21,462

0 1 2 Miles



Source: Esri, DigitalGlobe, GeoEye, Earthstar Geographics, CNES/Airbus DS, USDA, USGS, AEX, Getmapping, Aerogrid, IGN, IGP, swisstopo, and the GIS User Community

110°33'0"W 110°31'30"W 30' 110°28'30"W 110°27'0"W 110°25'30"W 110°24'0"W 110°22'30"W 110°21'0"W 110°19'30"W 110°18'0"W 110°16'30"W 15' 110°13'30"W 110°12'0"W 110°10'30"W

43°22'30"N
43°21'0"N
43°19'30"N
43°18'0"N
43°16'30"N
15'
43°13'30"N
43°12'0"N

43°22'30"N
43°21'0"N
43°19'30"N
43°18'0"N
43°16'30"N
15'
43°13'30"N
43°12'0"N