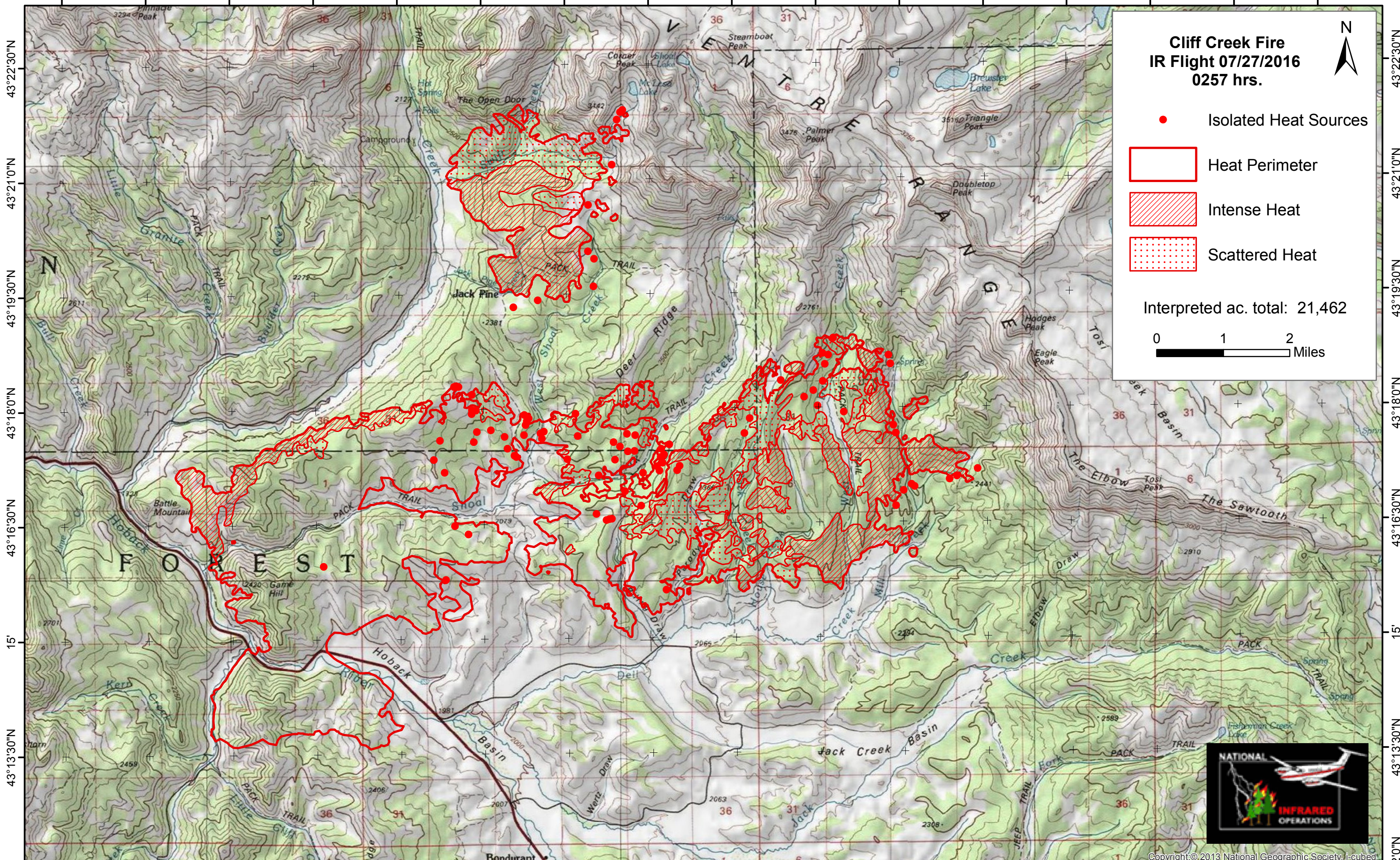


110°33'0"W 110°31'30"W 30' 110°28'30"W 110°27'0"W 110°25'30"W 110°24'0"W 110°22'30"W 110°21'0"W 110°19'30"W 110°18'0"W 110°16'30"W 15' 110°13'30"W 110°12'0"W 110°10'30"W

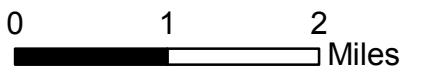


### Cliff Creek Fire IR Flight 07/27/2016 0257 hrs.



- Isolated Heat Sources
- Heat Perimeter
- Intense Heat
- Scattered Heat

Interpreted ac. total: 21,462



43°22'30"N  
43°21'0"N  
43°19'30"N  
43°18'0"N  
43°16'30"N  
15'  
43°13'30"N  
43°12'0"N

43°22'30"N  
43°21'0"N  
43°19'30"N  
43°18'0"N  
43°16'30"N  
15'  
43°13'30"N  
43°12'0"N

