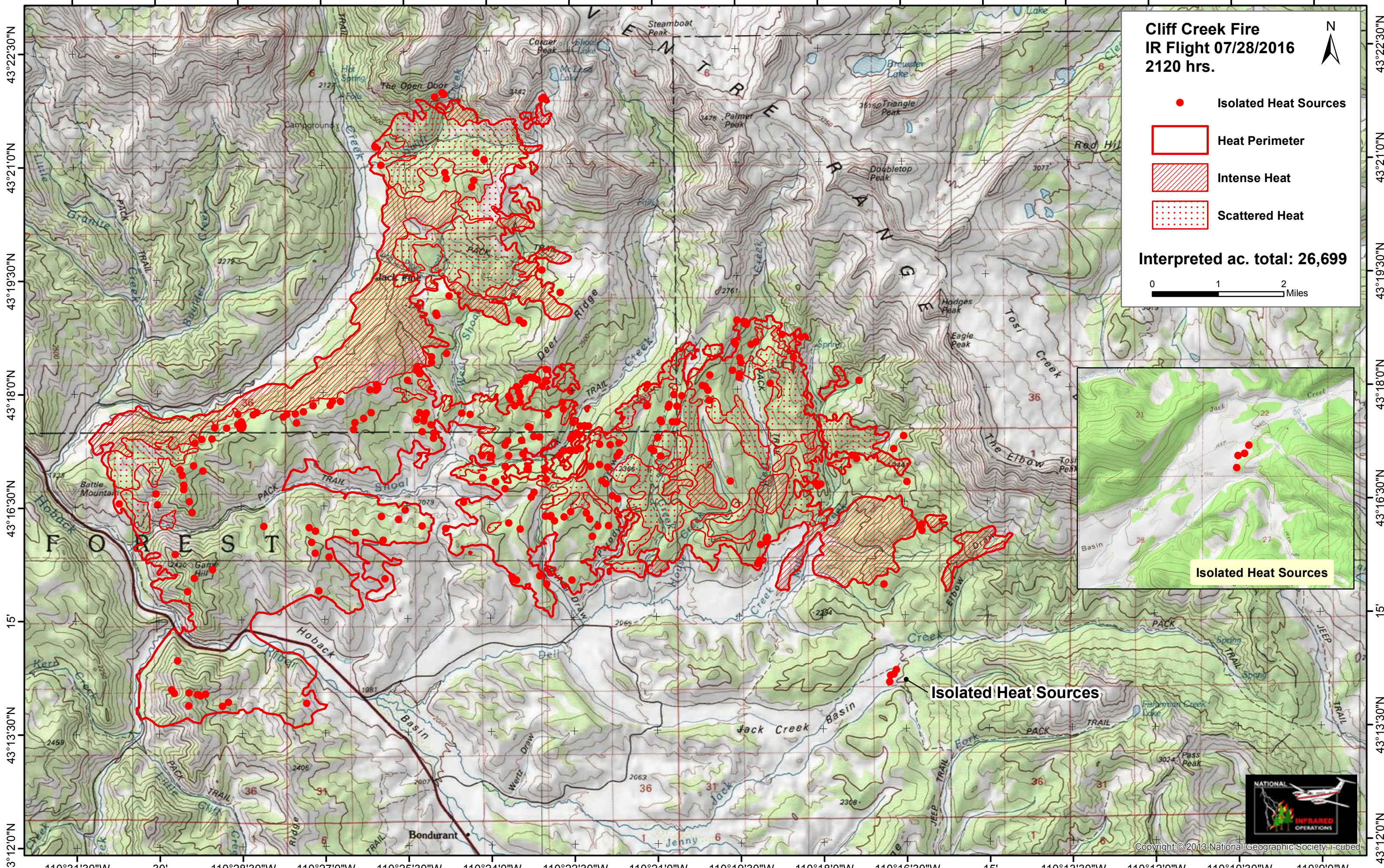


110°31'30"W 30' 110°28'30"W 110°27'0"W 110°25'30"W 110°24'0"W 110°22'30"W 110°21'0"W 110°19'30"W 110°18'0"W 110°16'30"W 15' 110°13'30"W 110°12'0"W 110°10'30"W 110°9'0"W

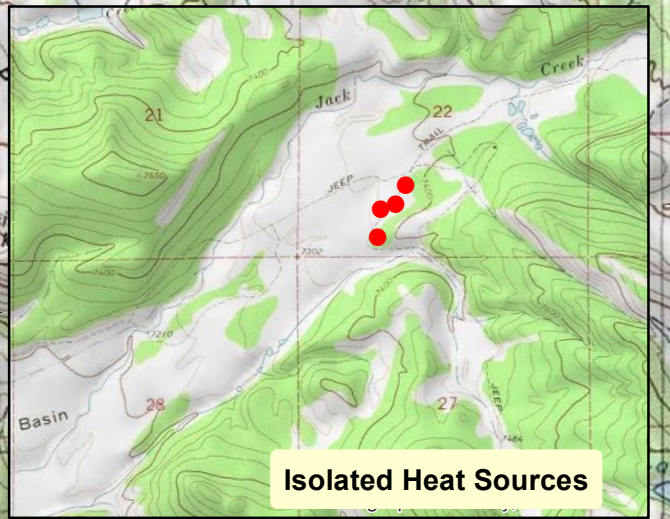
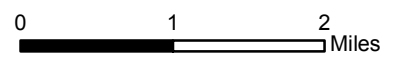


**Cliff Creek Fire  
IR Flight 07/28/2016  
2120 hrs.**

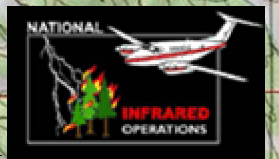


- Isolated Heat Sources
- Heat Perimeter
- Intense Heat
- Scattered Heat

**Interpreted ac. total: 26,699**



**Isolated Heat Sources**



110°31'30"W 30' 110°28'30"W 110°27'0"W 110°25'30"W 110°24'0"W 110°22'30"W 110°21'0"W 110°19'30"W 110°18'0"W 110°16'30"W 15' 110°13'30"W 110°12'0"W 110°10'30"W 110°9'0"W

43°22'30"N  
43°21'0"N  
43°19'30"N  
43°18'0"N  
43°16'30"N  
15'  
43°13'30"N  
43°12'0"N

43°22'30"N  
43°21'0"N  
43°19'30"N  
43°18'0"N  
43°16'30"N  
15'  
43°13'30"N  
43°12'0"N