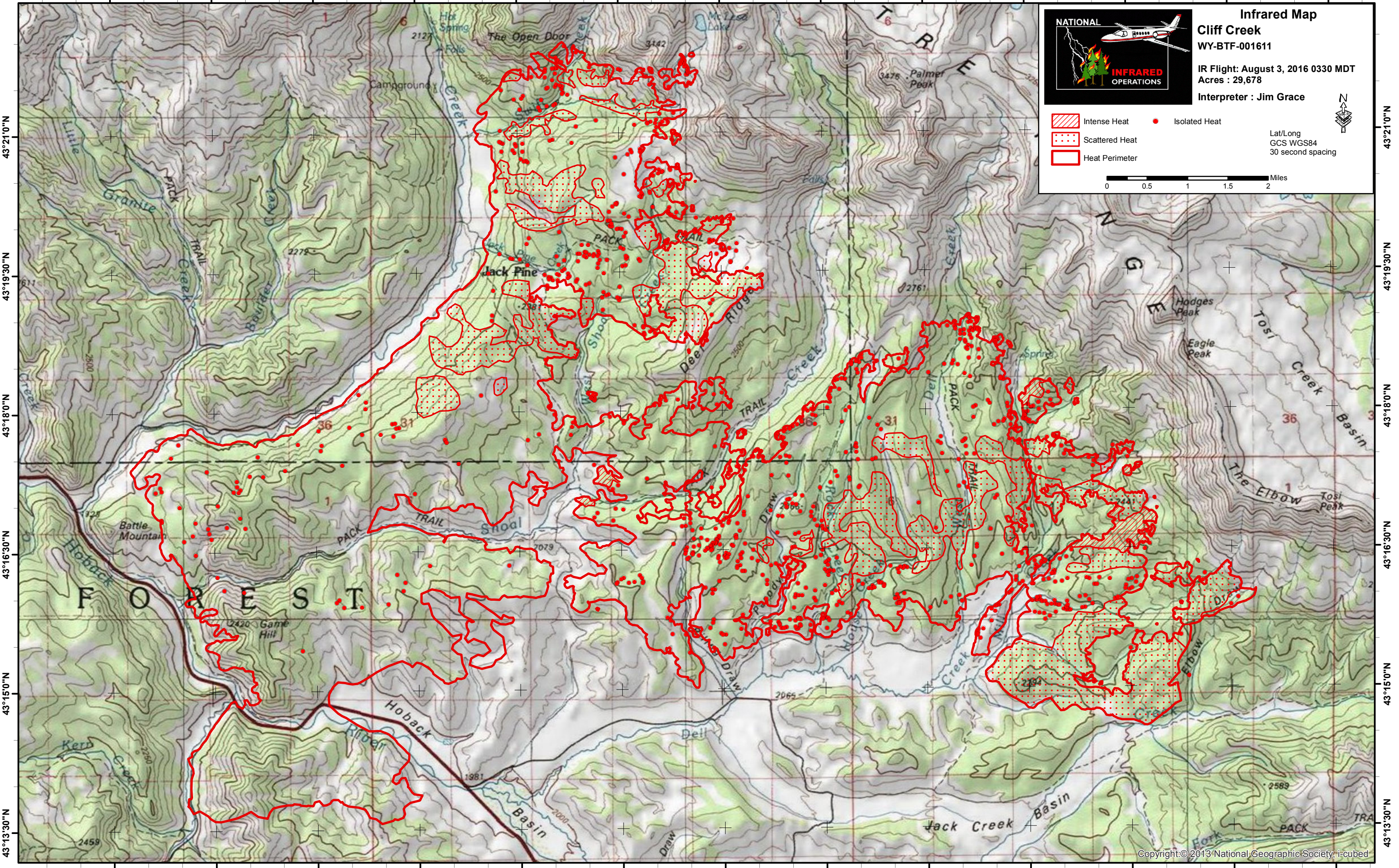


110°31'30"W 110°30'0"W 110°28'30"W 110°27'0"W 110°25'30"W 110°24'0"W 110°22'30"W 110°21'0"W 110°19'30"W 110°18'0"W 110°16'30"W 110°15'0"W 110°13'30"W



Infrared Map
Cliff Creek
WY-BTF-001611
IR Flight: August 3, 2016 0330 MDT
Acres : 29,678
Interpreter : Jim Grace

Legend:
Intense Heat (Red hatched box)
Scattered Heat (Red dotted box)
Heat Perimeter (Red outline box)
Isolated Heat (Red dot)
Scale: 0 to 2 Miles
Lat/Long: GCS WGS84, 30 second spacing

43°21'0"N
43°19'30"N
43°18'0"N
43°16'30"N
43°15'0"N
43°13'30"N

43°21'0"N
43°19'30"N
43°18'0"N
43°16'30"N
43°15'0"N
43°13'30"N

110°31'30"W 110°30'0"W 110°28'30"W 110°27'0"W 110°25'30"W 110°24'0"W 110°22'30"W 110°21'0"W 110°19'30"W 110°18'0"W 110°16'30"W 110°15'0"W 110°13'30"W