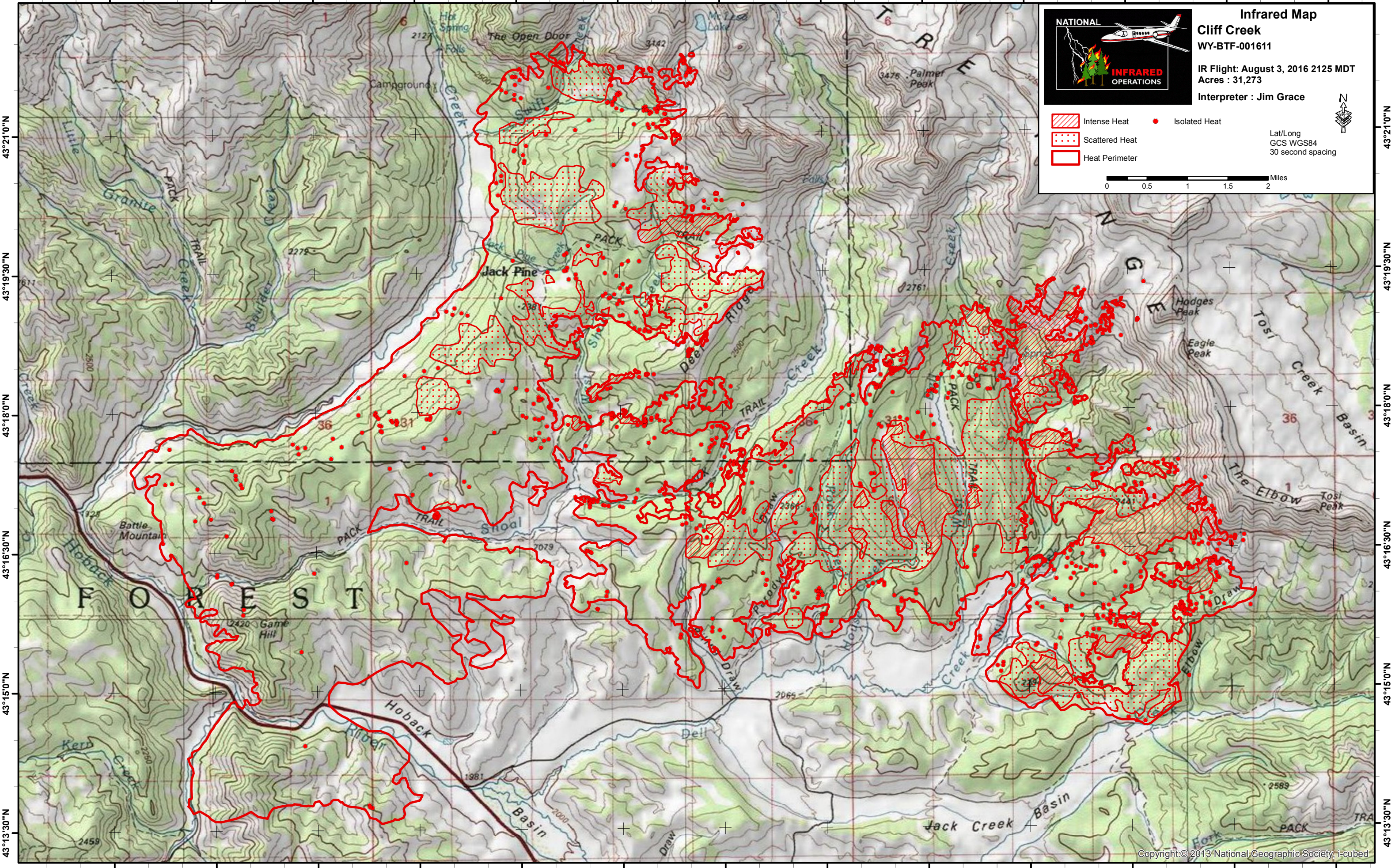






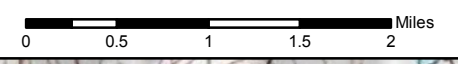
110°31'30"W 110°30'0"W 110°28'30"W 110°27'0"W 110°25'30"W 110°24'0"W 110°22'30"W 110°21'0"W 110°19'30"W 110°18'0"W 110°16'30"W 110°15'0"W 110°13'30"W



Infrared Map
Cliff Creek
WY-BTF-001611
IR Flight: August 3, 2016 2125 MDT
Acres : 31,273
Interpreter : Jim Grace

-  Intense Heat
-  Scattered Heat
-  Heat Perimeter
-  Isolated Heat

Lat/Long
GCS WGS84
30 second spacing



43°21'0"N
43°19'30"N
43°18'0"N
43°16'30"N
43°15'0"N
43°13'30"N

43°21'0"N
43°19'30"N
43°18'0"N
43°16'30"N
43°15'0"N
43°13'30"N

H O B A C K
F O R E S T

T R I F
P E A K

N
G
E

Hodges Peak
Eagle Peak

Tosi Creek Basin
The Elbow
Tosi Peak

Jack Creek Basin
Hoback
Draw
Basin

110°31'30"W 110°30'0"W 110°28'30"W 110°27'0"W 110°25'30"W 110°24'0"W 110°22'30"W 110°21'0"W 110°19'30"W 110°18'0"W 110°16'30"W 110°15'0"W 110°13'30"W