

110°31'30"W 110°30'0"W 110°28'30"W 110°27'0"W 110°25'30"W 110°24'0"W 110°22'30"W 110°21'0"W 110°19'30"W 110°18'0"W 110°16'30"W 110°15'0"W 110°13'30"W



Infrared Map
Cliff Creek
WY-BTF-001611
IR Flight: August 8, 2016 0038 MDT
Acres : 32,190
Interpreter : Jim Grace

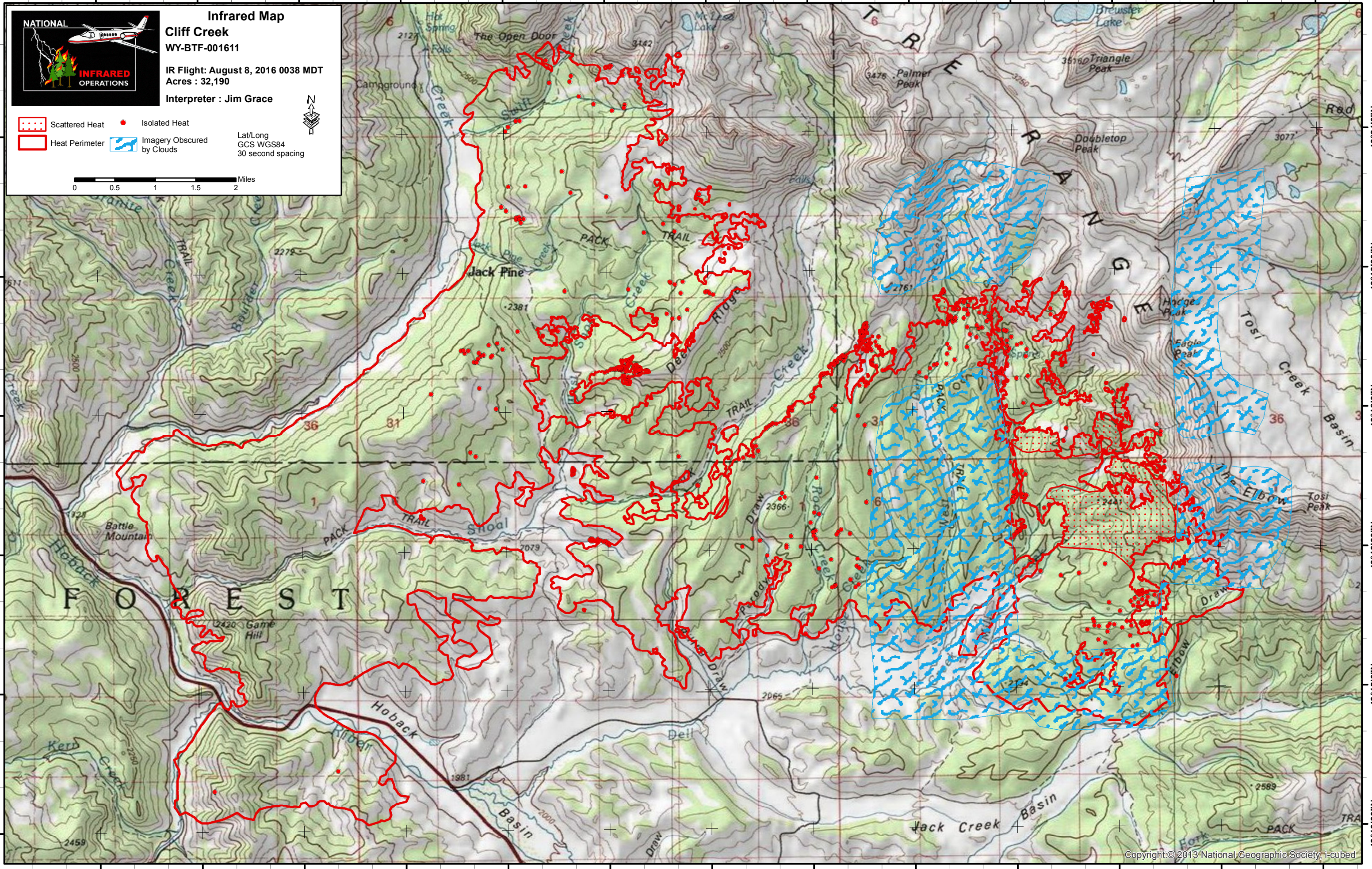
● Scattered Heat ● Isolated Heat
 Heat Perimeter Imagery Obscured by Clouds

Lat/Long
GCS WGS84
30 second spacing

0 0.5 1 1.5 2 Miles

43°21'0"N
43°19'30"N
43°18'0"N
43°16'30"N
43°15'0"N
43°13'30"N

43°21'0"N
43°19'30"N
43°18'0"N
43°16'30"N
43°15'0"N
43°13'30"N



110°31'30"W 110°30'0"W 110°28'30"W 110°27'0"W 110°25'30"W 110°24'0"W 110°22'30"W 110°21'0"W 110°19'30"W 110°18'0"W 110°16'30"W 110°15'0"W 110°13'30"W