




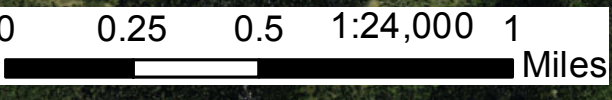
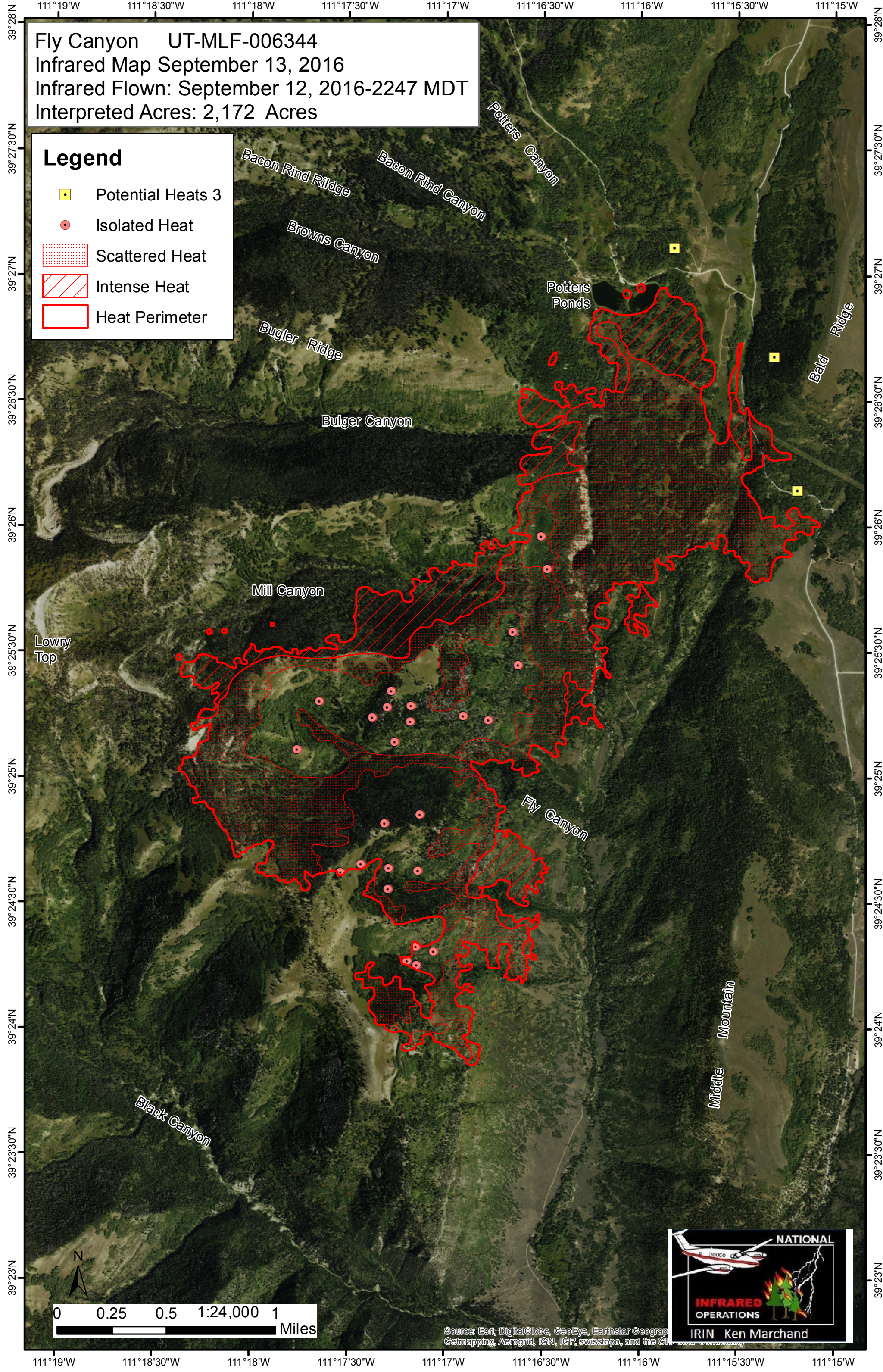


Fly Canyon UT-MLF-006344  
 Infrared Map September 13, 2016  
 Infrared Flown: September 12, 2016-2247 MDT  
 Interpreted Acres: 2,172 Acres

**Legend**

-  Potential Heats 3
-  Isolated Heat
-  Scattered Heat
-  Intense Heat
-  Heat Perimeter



Source: Esri, DigitalGlobe, GeoEye, Earthstar Geograph, Getmapping, Aerogrid, IGN, IGP, swisstopo, and the GIS User Community