

113°6'0"W

113°5'30"W

113°5'0"W

113°4'30"W

37°36'30"N

37°36'30"N

37°36'0"N

37°36'0"N

37°35'30"N

37°35'30"N

37°35'0"N

37°35'0"N

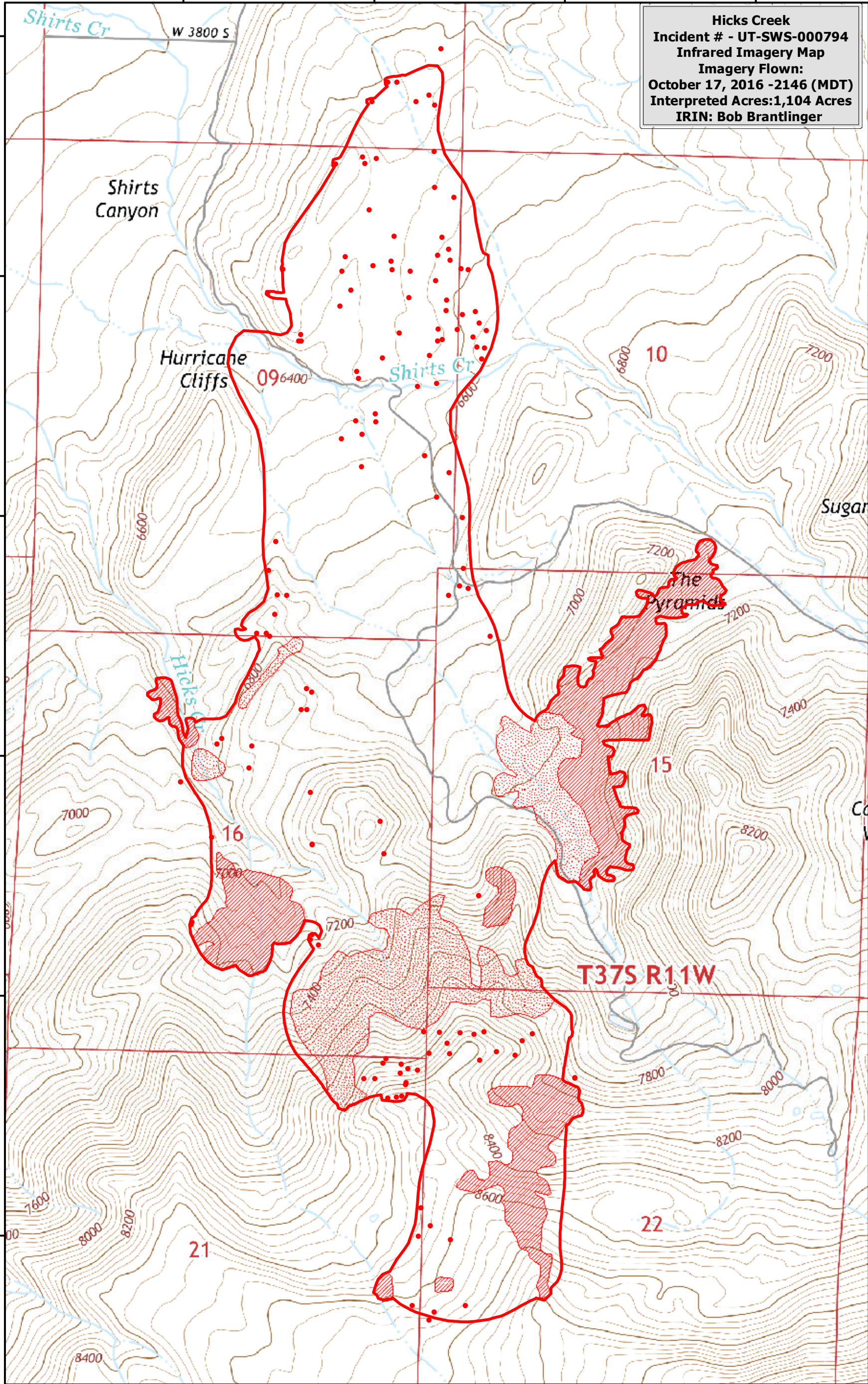
37°34'30"N

37°34'30"N

37°34'0"N

37°34'0"N

Hicks Creek
Incident # - UT-SWS-000794
Infrared Imagery Map
Imagery Flow:
October 17, 2016 -2146 (MDT)
Interpreted Acres:1,104 Acres
IRIN: Bob Brantlinger



Legend

-  **Heat Perimeter**
-  **Intense Heat**
-  **Isolated Heat Source**
-  **Scattered Heat Source**

