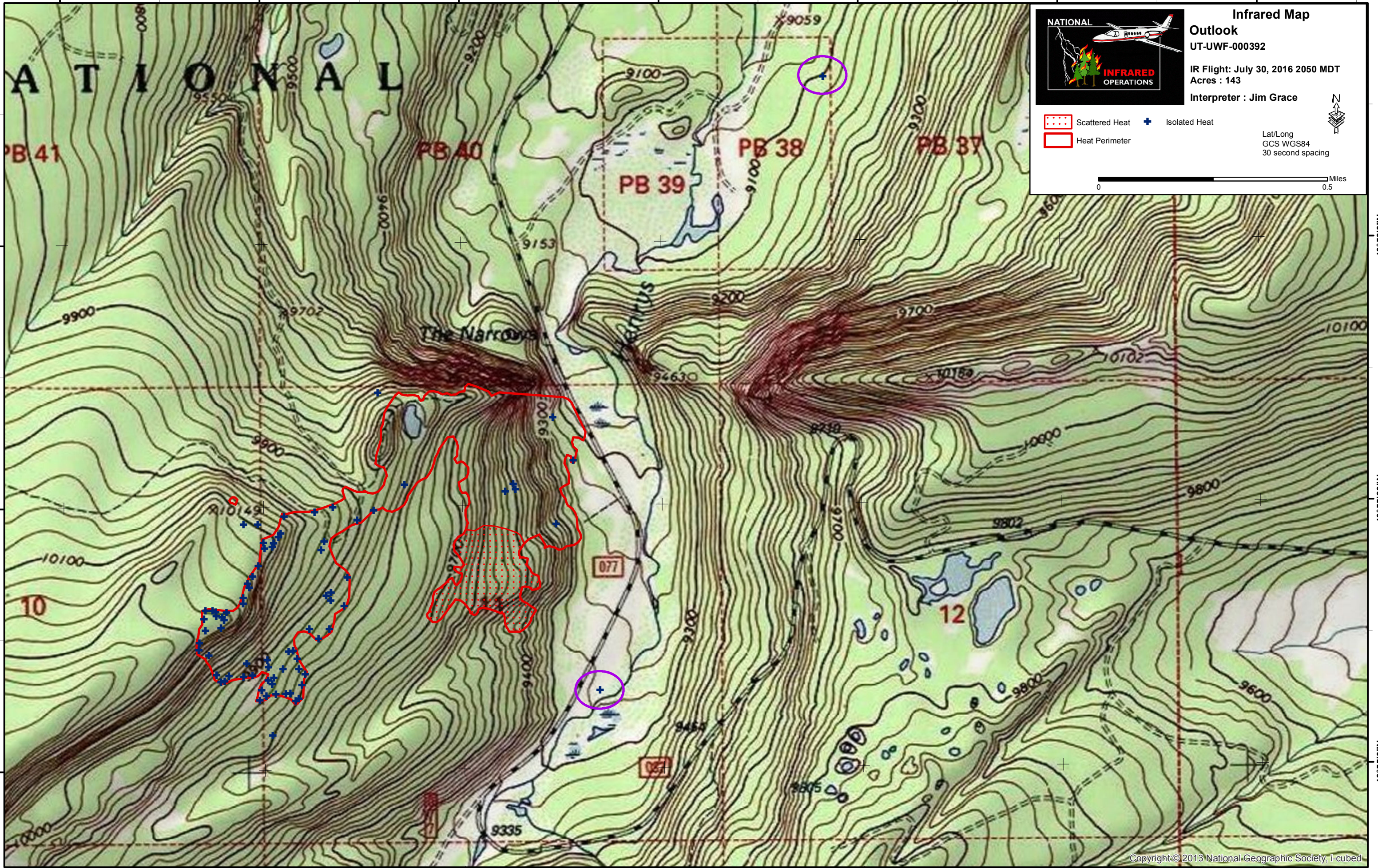





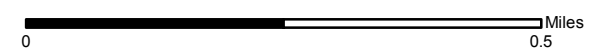
110°20'30"W 110°20'0"W 110°19'30"W 110°19'0"W 110°18'30"W 110°18'0"W 110°17'30"W



**Infrared Map**  
**Outlook**  
UT-UWF-000392  
IR Flight: July 30, 2016 2050 MDT  
Acres : 143  
Interpreter : Jim Grace

-  Scattered Heat
-  Isolated Heat
-  Heat Perimeter

Lat/Long  
GCS WGS84  
30 second spacing



40°56'0"N

40°56'0"N

40°55'30"N

40°55'30"N

40°55'0"N

40°55'0"N

110°20'30"W 110°20'0"W 110°19'30"W 110°19'0"W 110°18'30"W 110°18'0"W 110°17'30"W