

Decision Support for Aerial Fire Retardant Avoidance

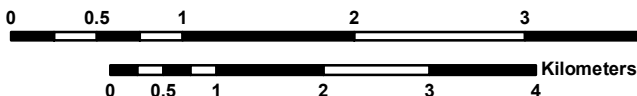
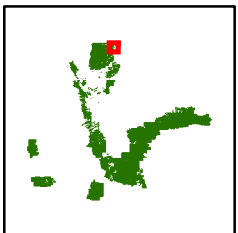
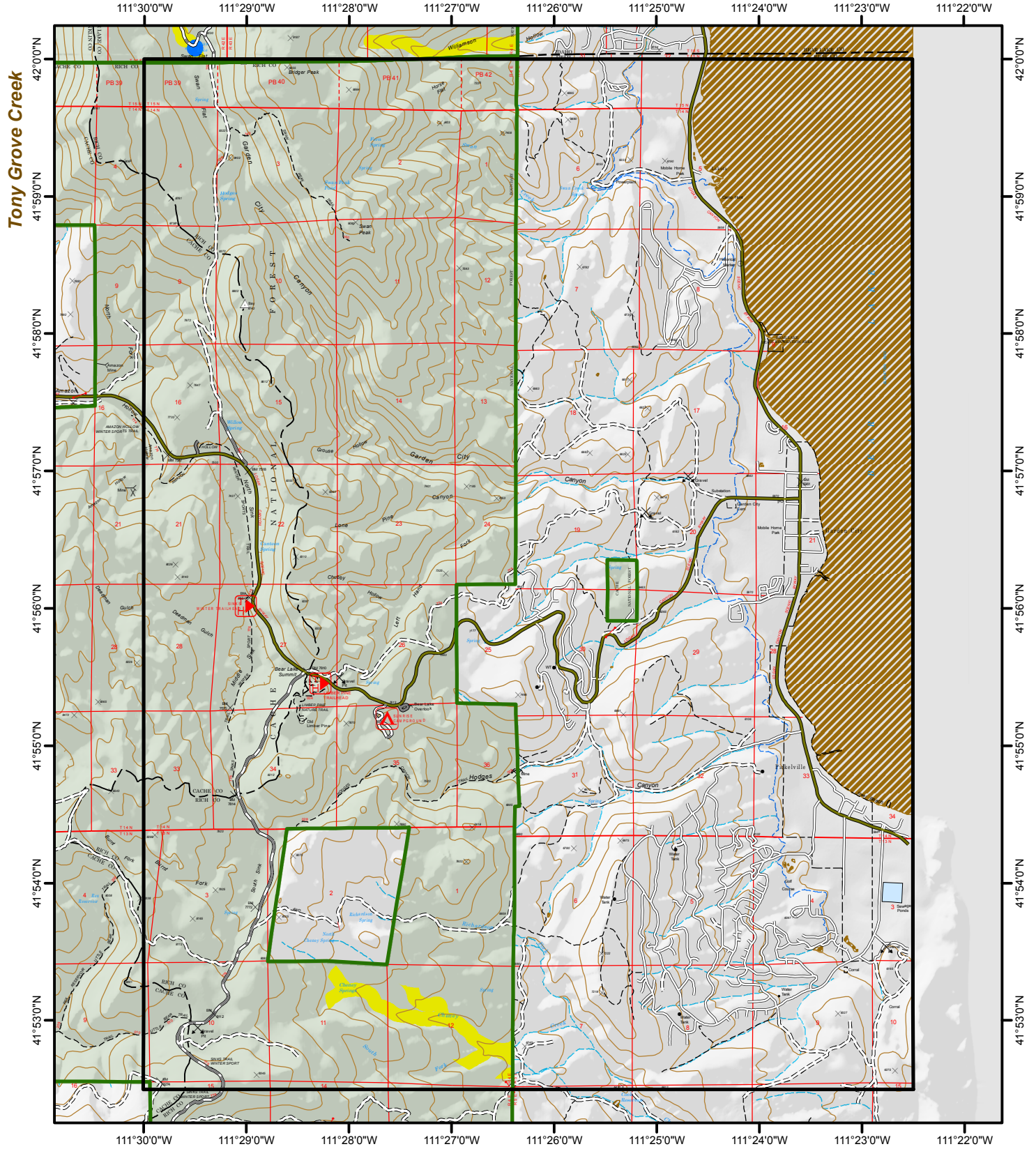
Uinta-Wasatch-Cache National Forest

Garden City Quad

Saint Charles

Tony Grove Creek

Meadowville



Note: This map is solely intended to depict relevant Threatened, Endangered, Proposed, Candidate, and Sensitive Species, along with streams and water bodies as a planning tool for decisions with regard to aerial fire retardant avoidance.

March 18, 2016