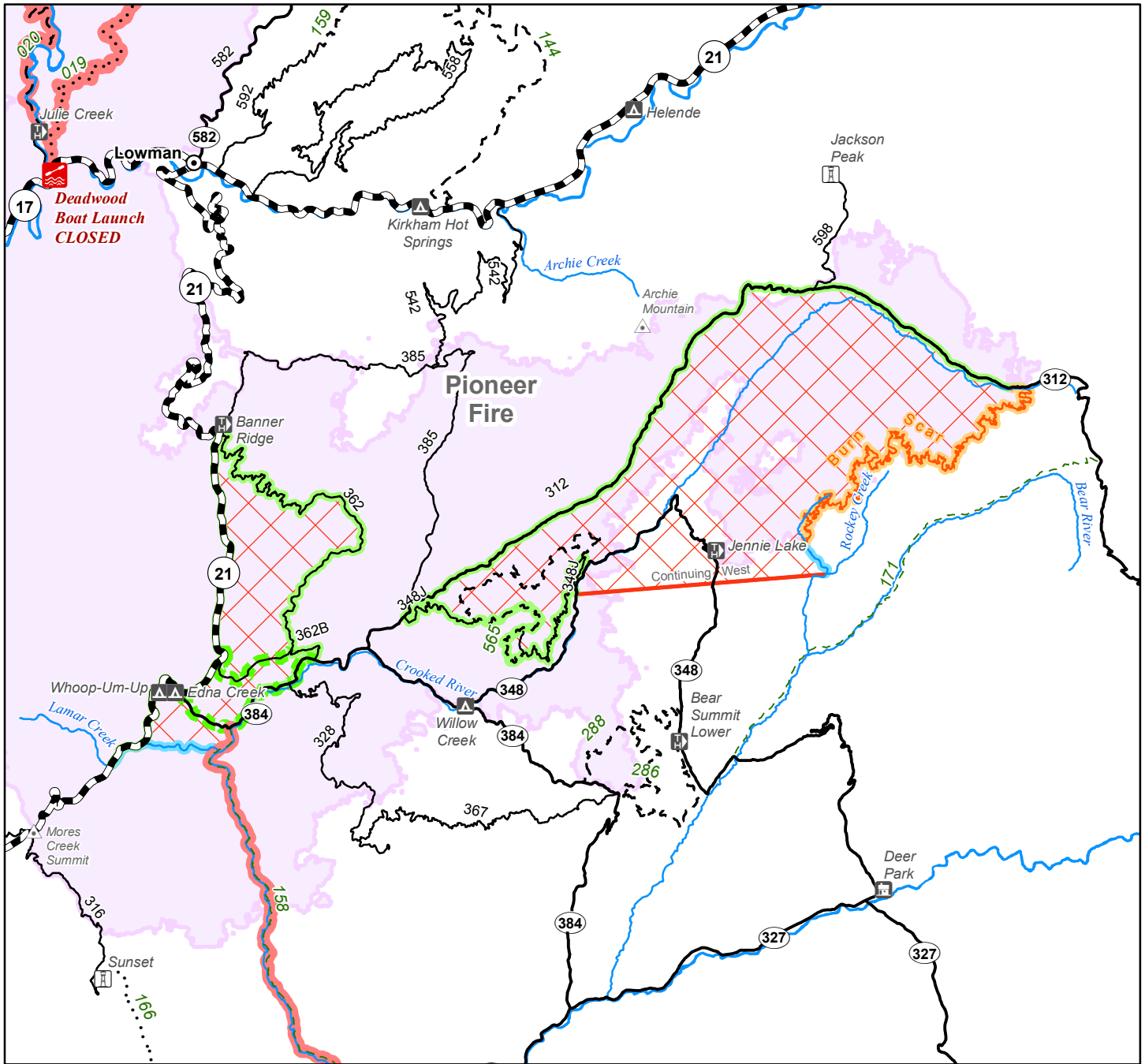


Boise National Forest Area Closure

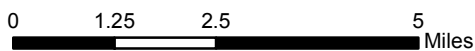
Pioneer Fire - Version #10 - September 30, 2016

Order Number 0402-00-48 - Map 1



- | | | | | | | | |
|--|--------------------|--|-----------------------|--|--|--|---|
| | Closed Boat Launch | | Highway | | Closed Trail | | Closure Area Version #10 |
| | Town | | Road | | Open Road - Exemption | | Pioneer Fire Perimeter |
| | Mountain Peak | | ATV Trail 50" or less | | Closure boundary following open road/trail | | Pioneer Fire Perimeter as of 2016-09-29 |
| | Campground | | Motorcycle Trail | | Closure boundary following edge of burn scar | | |
| | Cabin/Lodge | | Non-Motorized Trail | | Closure boundary following stream/river | | |
| | Trailhead | | Stream/River | | Closure boundary following closed trail | | |
| | Lookout | | | | | | |

Pioneer Fire - Version 10
 Prepared by: sekormos
 Produced: 9/30/2016 - 1126 Hrs
 Projection: UTM 11 N, NAD 83



The U.S. Department of Agriculture, Forest Service uses the most current and complete data available. GIS data and product accuracy may vary. They may be developed from sources of differing accuracy, accurate only at certain scales, based on modeling or interpretation, incomplete while being revised or created, etc. Using GIS products for purposes other than those for which they were created, may yield inaccurate or misleading results. The Forest Service reserves the right to correct, modify, or replace GIS products without notification.