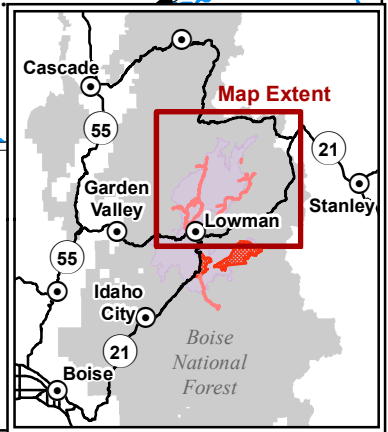
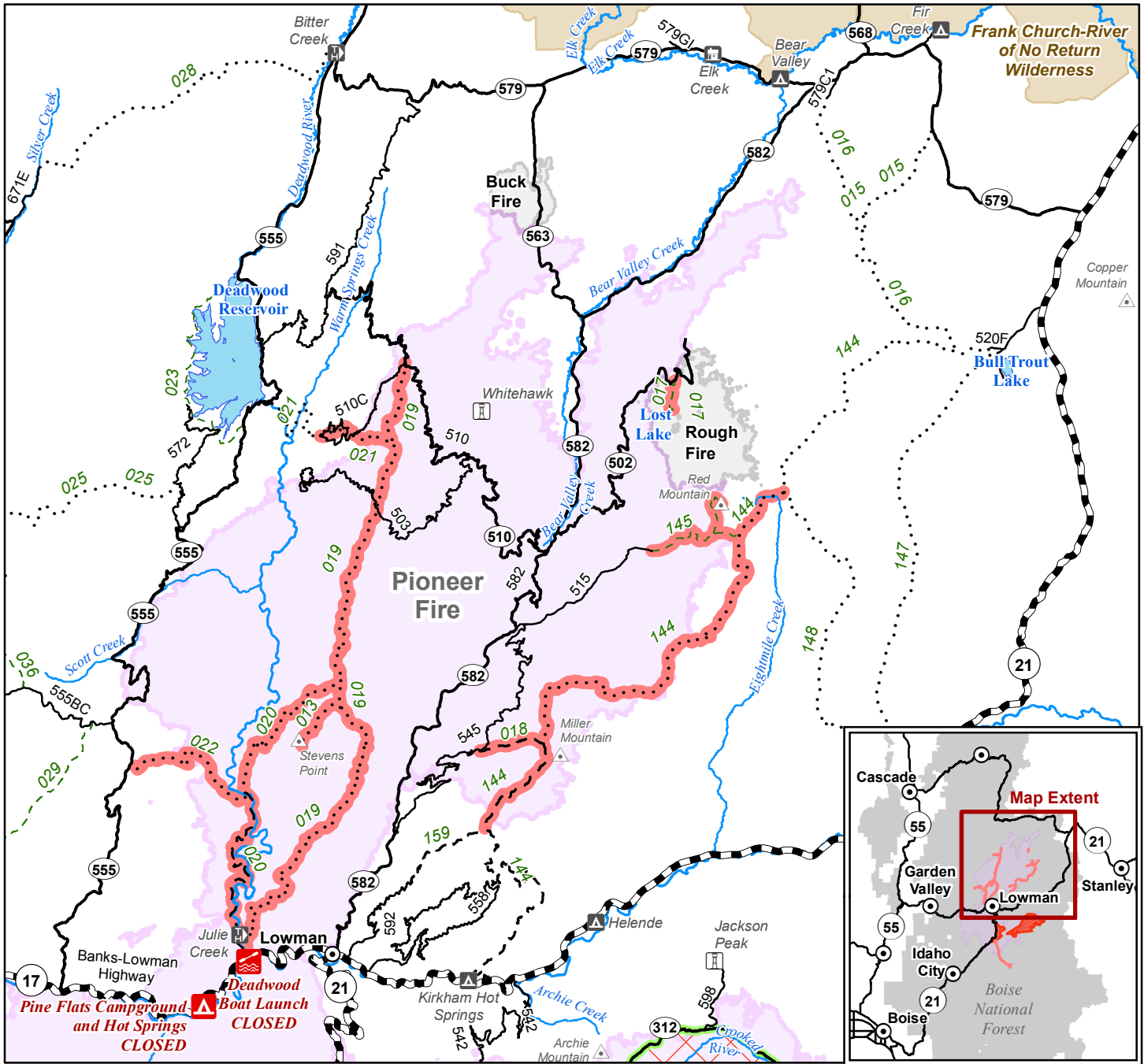


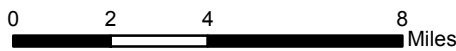
Boise National Forest Area Closure

Pioneer Fire - Version #10 - September 30, 2016

Order Number 0402-00-48 - Map 2



- | | | | |
|--------------------|-----------------------|--|---|
| Closed Campground | Highway | Closed Trail | Closure Area Version #10 |
| Closed Boat Launch | Road | Closure boundary following open road/trail | Lake/Reservoir |
| Town | ATV Trail 50" or less | | Pioneer Fire Perimeter as of 2016-09-29 |
| Mountain Peak | Motorcycle Trail | | Contained Fire Perimeter 2016 |
| Campground | Non-Motorized Trail | | Wilderness |
| Trailhead | Stream/River | | |
| Lookout | | | |



The U.S. Department of Agriculture, Forest Service uses the most current and complete data available. GIS data and product accuracy may vary. They may be developed from sources of differing accuracy, accurate only at certain scales, based on modeling or interpretation, incomplete while being revised or created, etc. Using GIS products for purposes other than those for which they were created, may yield inaccurate or misleading results. The Forest Service reserves the right to correct, modify, or replace GIS products without notification.