

115°55'W 115°50'W 115°45'W 115°40'W 115°35'W 115°30'W 115°25'W 115°20'W 115°15'W

Pioneer Fire Infrared Map
ID-BOF-000539
Map Date: 08/24/2016
Imagery Date: 08/23/2016
Imagery Time: 2031 MDT
IR Interpreted Acres: 101,922
IRIN: Tammy Hocut

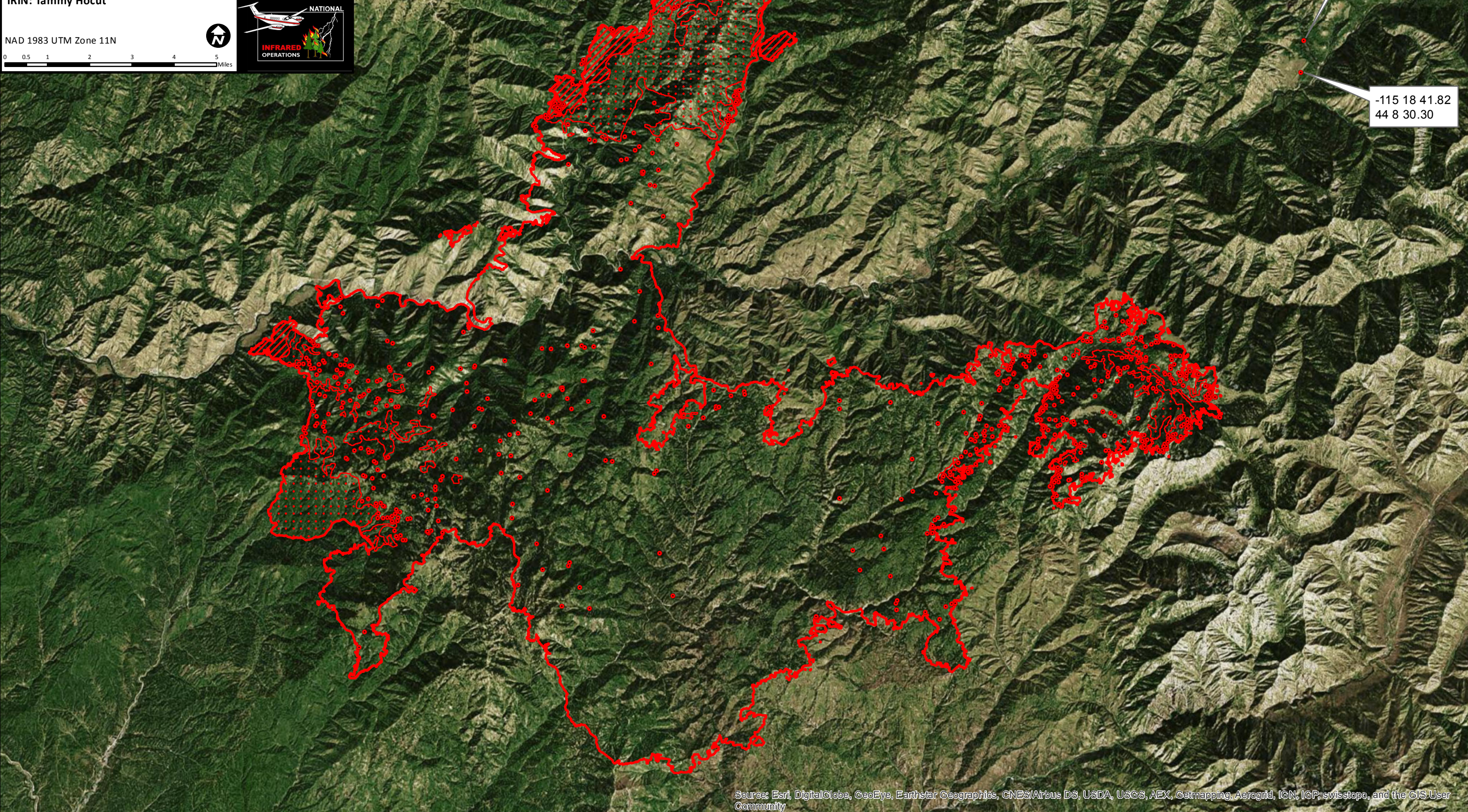
- Isolated Heat Sources
- Heat Perimeter
- Intense Heat
- Scattered Heat



NAD 1983 UTM Zone 11N
0 0.5 1 2 3 4 5 Miles

-115 18 41.76
44 9 8.83

-115 18 41.82
44 8 30.30



44°10'N
44°5'N
44°0'N
43°55'N

44°10'N
44°5'N
44°0'N
43°55'N

115°55'W 115°50'W 115°45'W 115°40'W 115°35'W 115°30'W 115°25'W 115°20'W 115°15'W

Source: Esri, DigitalGlobe, GeoEye, Earthstar Geographics, CNES/Airbus DS, USDA, USGS, AEX, Getmapping, Aerogrid, IGN, IGP, swisstopo, and the GIS User Community