

115°50'W 115°45'W 115°40'W 115°35'W 115°30'W 115°25'W 115°20'W

44°25'N
44°20'N
44°15'N
44°10'N
44°5'N
44°0'N
43°55'N

44°25'N
44°20'N
44°15'N
44°10'N
44°5'N
44°0'N
43°55'N

Pioneer Fire Infrared Map

ID-BOF-000539

Map Date: 09/01/2016

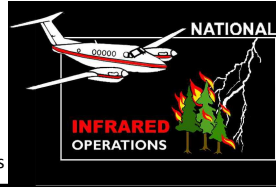
Imagery Date: 09/01/2016

Imagery Time: 1947 MDT

IR Interpreted Acres: 179,977

IRIN: Tammy Hocut

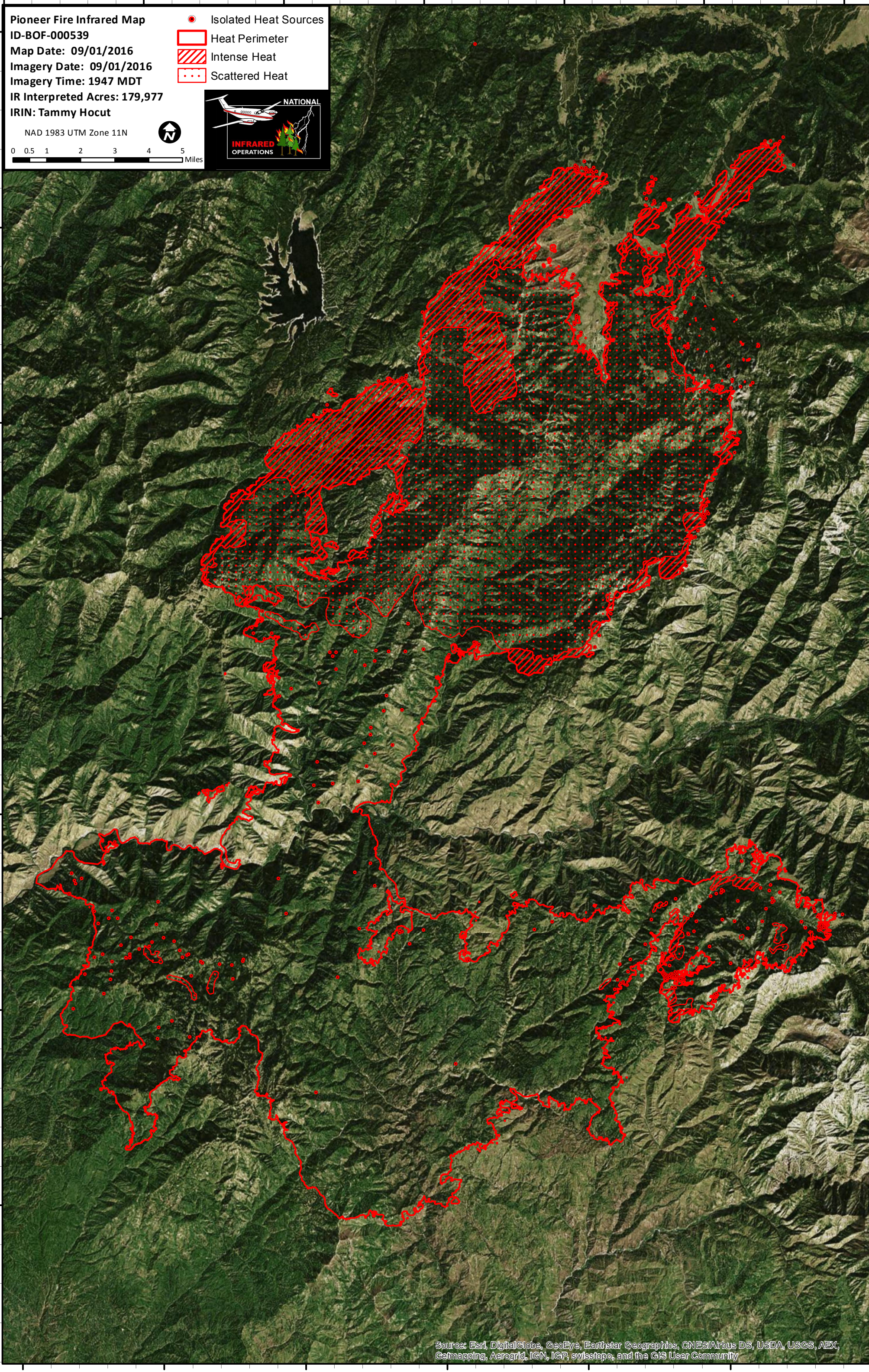
- Isolated Heat Sources
- Heat Perimeter
- Intense Heat
- Scattered Heat



NAD 1983 UTM Zone 11N



0 0.5 1 2 3 4 5 Miles



Source: Esri, DigitalGlobe, GeoEye, Earthstar Geographics, CNES/Airbus DS, USDA, USGS, AEX, Getmapping, Aerogrid, IGN, IGP, swisstopo, and the GIS User Community

115°50'W 115°45'W 115°40'W 115°35'W 115°30'W 115°25'W