


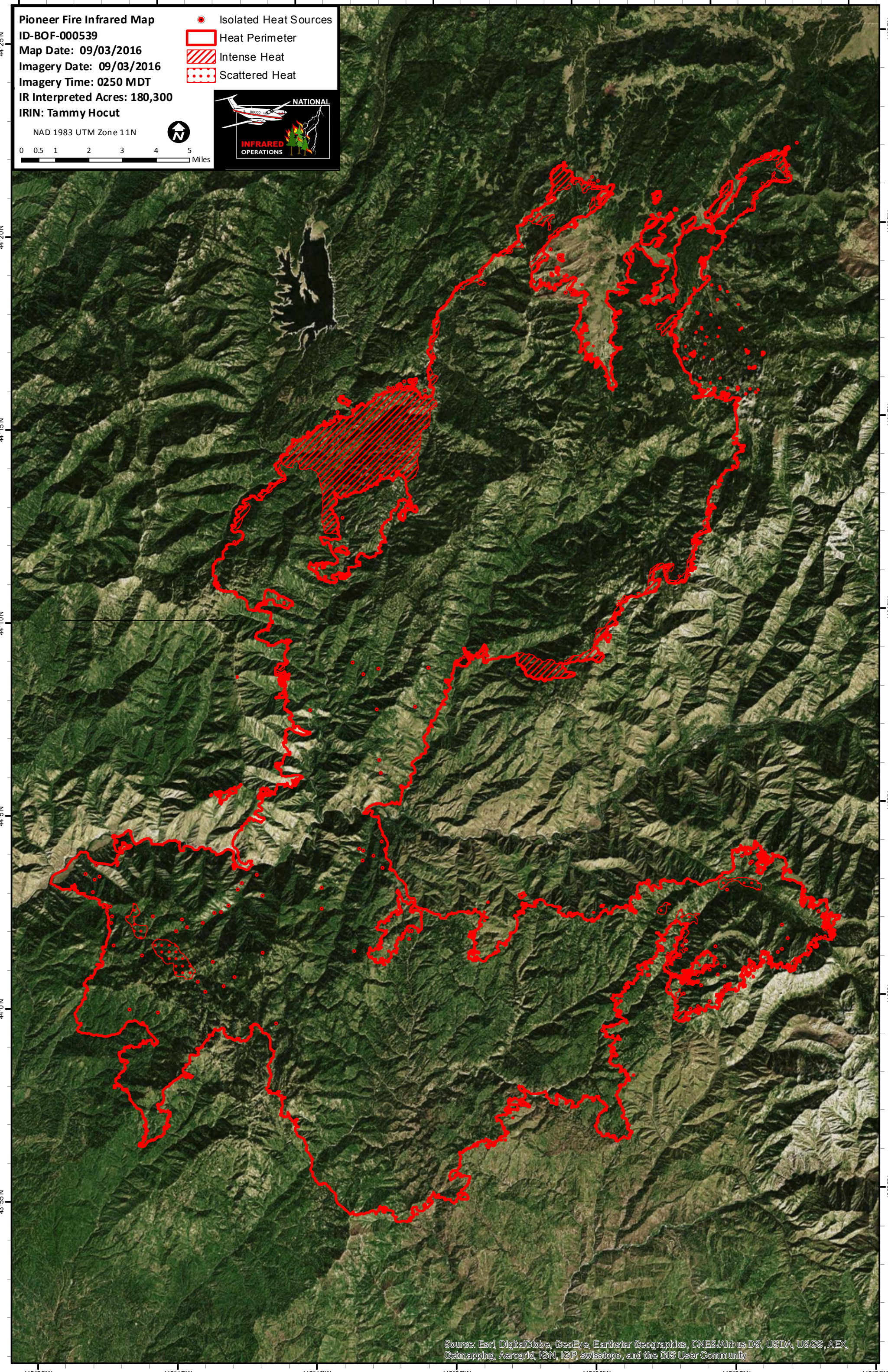
115°50'W 115°45'W 115°40'W 115°35'W 115°30'W 115°25'W 115°20'W

**Pioneer Fire Infrared Map**  
**ID-BOF-000539**  
**Map Date: 09/03/2016**  
**Imagery Date: 09/03/2016**  
**Imagery Time: 0250 MDT**  
**IR Interpreted Acres: 180,300**  
**IRIN: Tammy Hocut**

- Isolated Heat Sources
- Heat Perimeter
- Intense Heat
- Scattered Heat

NAD 1983 UTM Zone 11N

0 0.5 1 2 3 4 5 Miles

Source: Esri, DigitalGlobe, GeoEye, Earthstar Geographics, CNES/Airbus DS, USDA, USGS, AEX, Getmapping, Aerogrid, IGN, IGP, swisstopo, and the GIS User Community

115°50'W 115°45'W 115°40'W 115°35'W 115°30'W 115°25'W 115°20'W