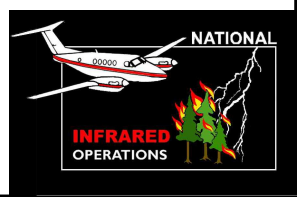


115°45'W 115°40'W 115°35'W 115°30'W 115°25'W 115°20'W


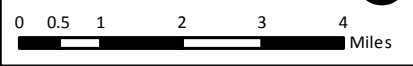
44°25'N
44°20'N
44°15'N
44°10'N
44°5'N
44°0'N
43°55'N

Pioneer Fire Infrared Map
ID-BOF-000539
Map Date: 09/04/2016
Imagery Date: 09/03/2016
Imagery Time: 2038 MDT
IR Interpreted Acres: 181,065
IRIN: Tammy Hocut

- Isolated Heat Sources
- Heat Perimeter
- Intense Heat
- Scattered Heat

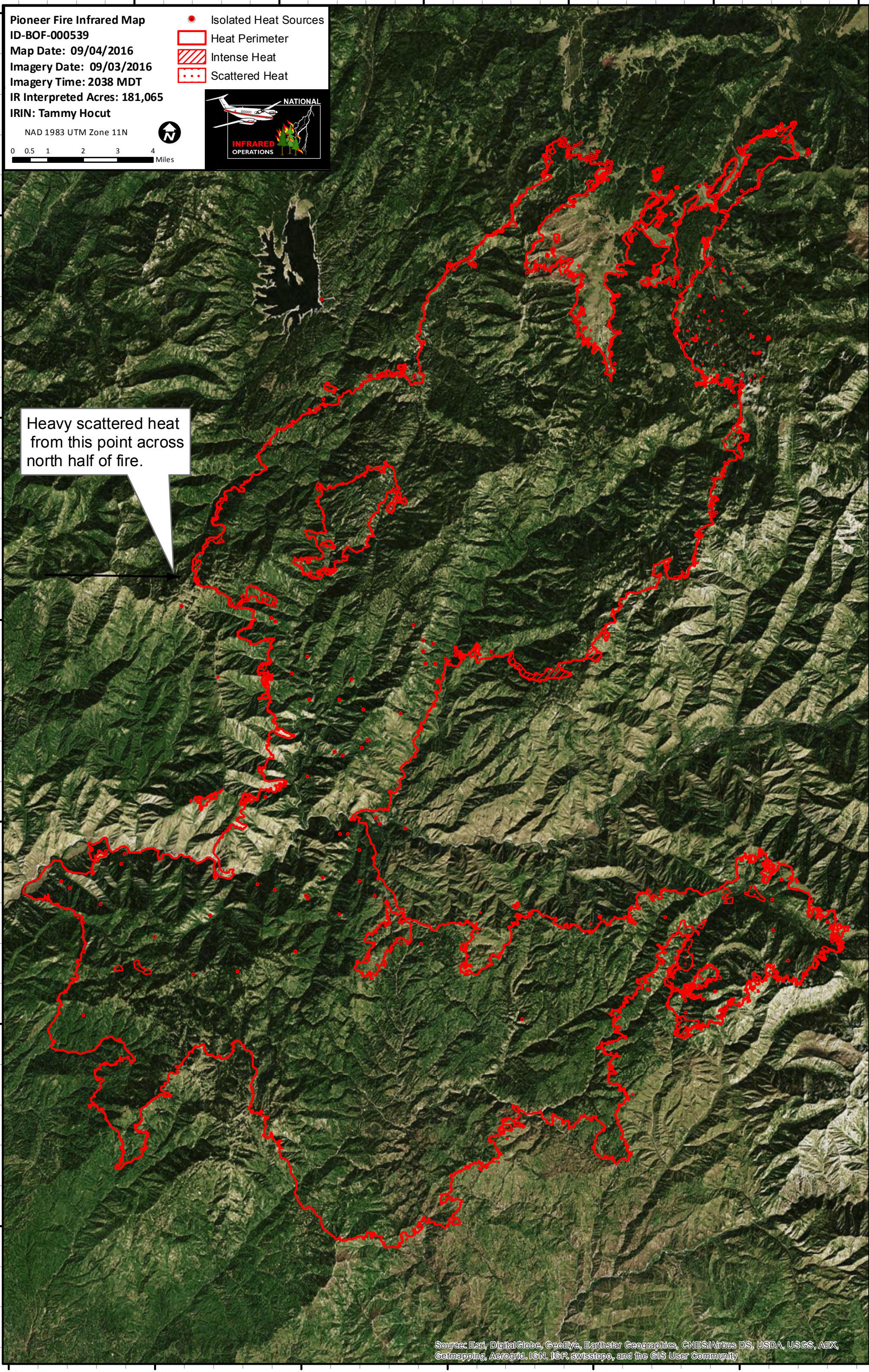


NAD 1983 UTM Zone 11N

0 0.5 1 2 3 4 Miles

Heavy scattered heat from this point across north half of fire.



Source: Esri, DigitalGlobe, GeoEye, Earthstar Geographics, CNES/Airbus DS, USDA, USGS, AEX, Getmapping, Aerogrid, IGN, IGP, swisstopo, and the GIS User Community

115°50'W 115°45'W 115°40'W 115°35'W 115°30'W 115°25'W