

115°45'W 115°40'W 115°35'W 115°30'W 115°25'W 115°20'W

44°25'N 44°20'N 44°15'N 44°10'N 44°5'N 44°0'N 43°55'N

**Pioneer Fire Infrared Map**

ID-BOF-000539

Map Date: 09/05/2016

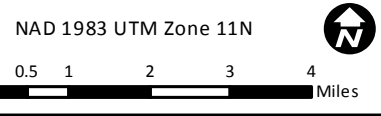
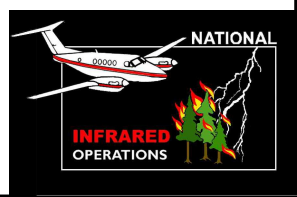
Imagery Date: 09/05/2016

Imagery Time: 0313 MDT

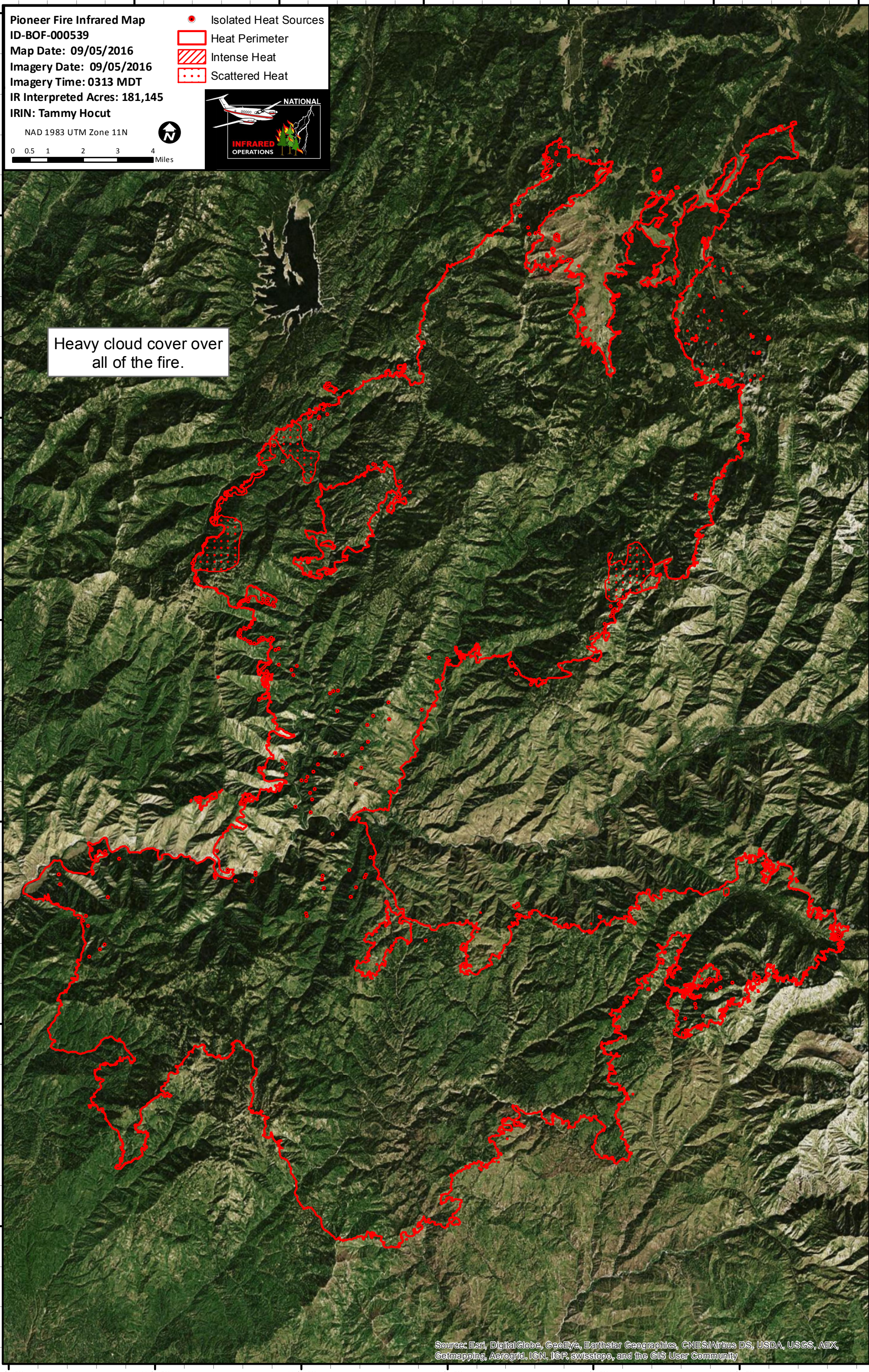
IR Interpreted Acres: 181,145

IRIN: Tammy Hocut

- Isolated Heat Sources
- ▭ Heat Perimeter
- ▨ Intense Heat
- ⋯ Scattered Heat



Heavy cloud cover over all of the fire.



Source: Esri, DigitalGlobe, GeoEye, Earthstar Geographics, CNES/Airbus DS, USDA, USGS, AEX, Getmapping, Aerogrid, IGN, IGP, swisstopo, and the GIS User Community

115°50'W 115°45'W 115°40'W 115°35'W 115°30'W 115°25'W