

115°45'W

115°40'W

115°35'W

115°30'W

115°25'W






115°20'W


Pioneer Fire Infrared Map
ID-BOI-000539

Map Date: 09/16/2016
 Imagery Date: 09/15/2016
 Imagery Time: 2032 MDT
 IR Interpreted Acres: 188,380

NAD 1983 2011 UTM Zone 11N
 0 0.5 1 2 3 4 Miles

IRIN: David Stephenson

-  Heat Perimeter
-  Intense Heat
-  Scattered Heat
-  Isolated Heat Sources
-  Clouds



44°25'N

44°20'N

44°15'N

44°10'N

44°5'N

44°0'N

43°55'N

43°50'N

43°45'N

44°25'N

44°20'N

44°15'N

44°10'N

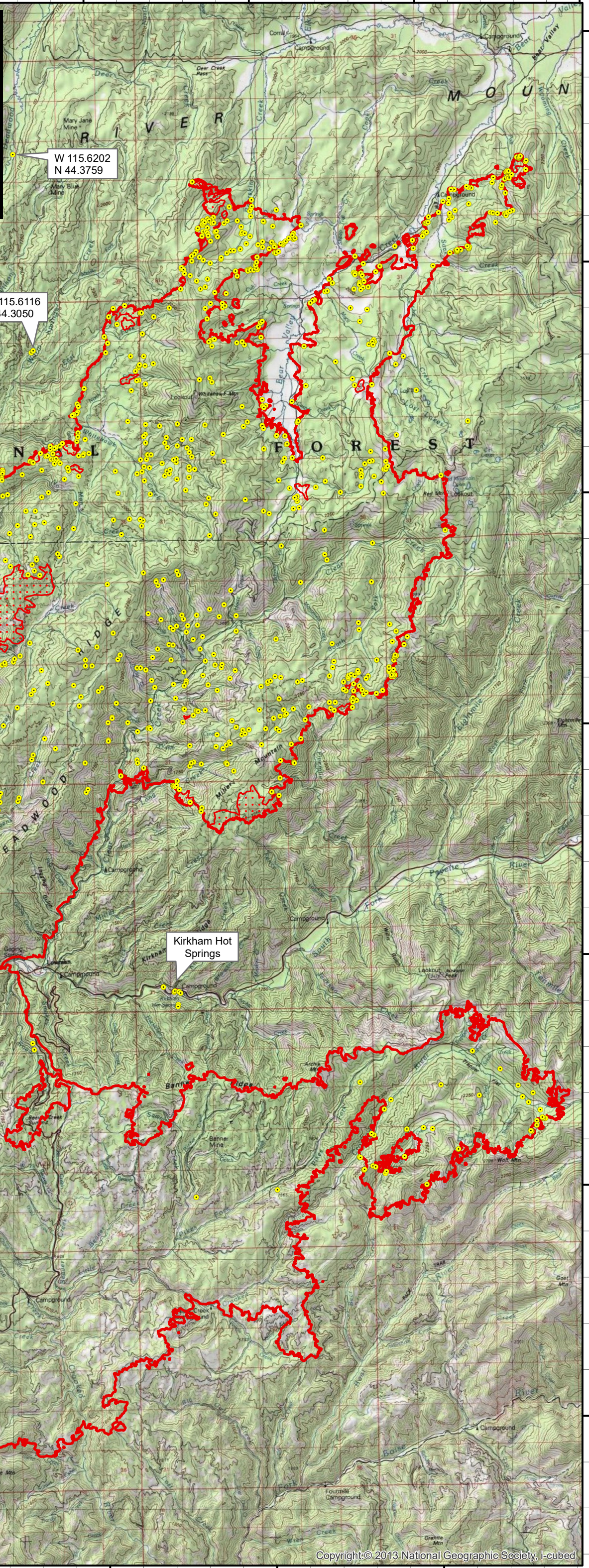
44°5'N

44°0'N

43°55'N

43°50'N

43°45'N



Campgrounds & FS Station

Silver Hot Springs

W 115.6116
N 44.3050

Kirkham Hot Springs