

115°48'W 115°46'W 115°44'W 115°42'W

43°58'N

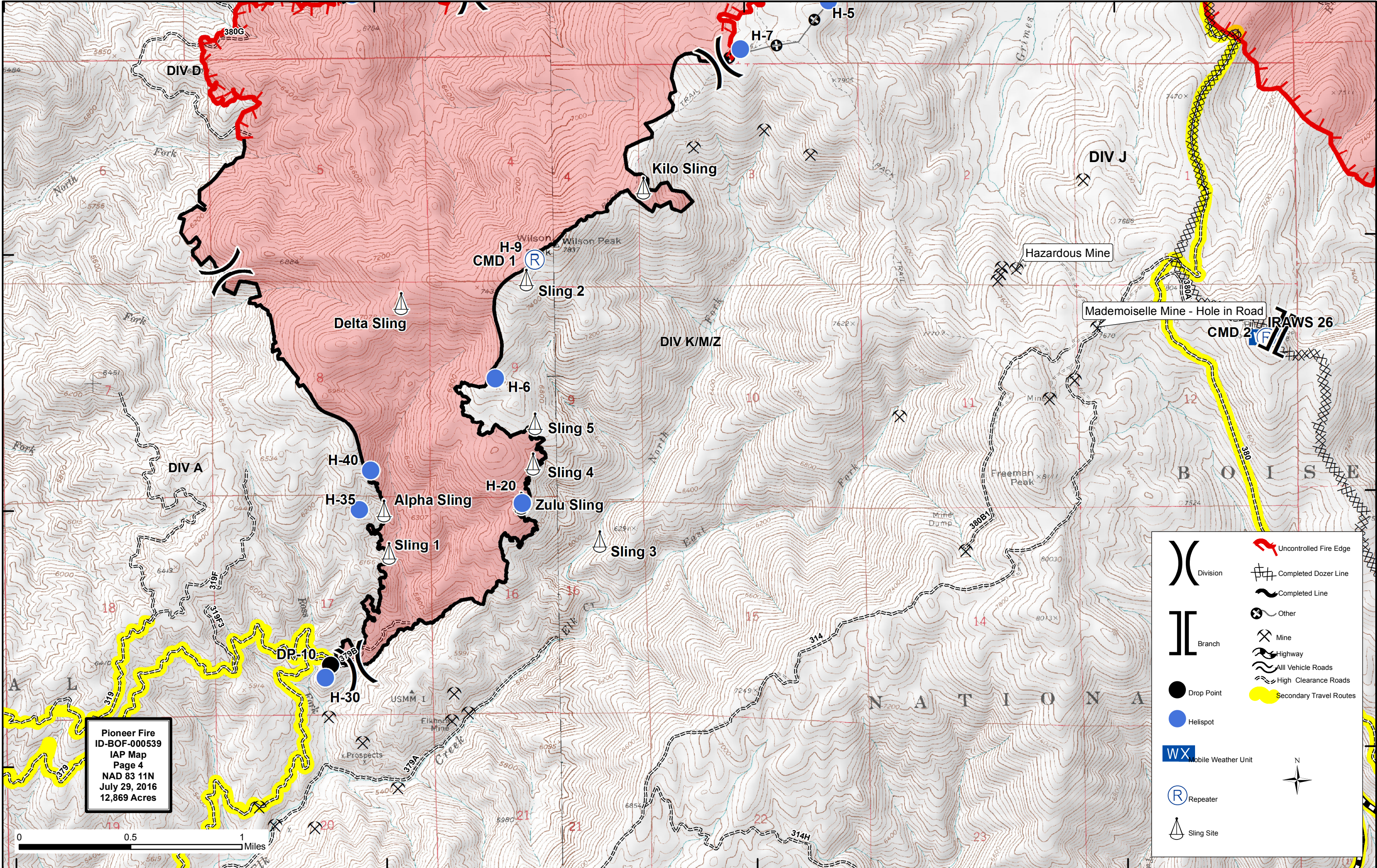
43°57'N

43°56'N

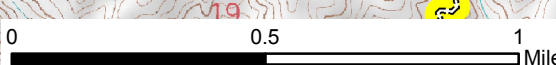
43°58'N

43°57'N

43°56'N



**Pioneer Fire**  
 ID-BOF-000539  
 IAP Map  
 Page 4  
 NAD 83 11N  
 July 29, 2016  
 12,869 Acres



	Uncontrolled Fire Edge
	Completed Dozer Line
	Completed Line
	Other
	Mine
	Highway
	All Vehicle Roads
	High Clearance Roads
	Secondary Travel Routes
	Drop Point
	Helispot
	Mobile Weather Unit
	Repeater
	Sling Site

115°48'W 115°46'W 115°44'W 115°42'W