
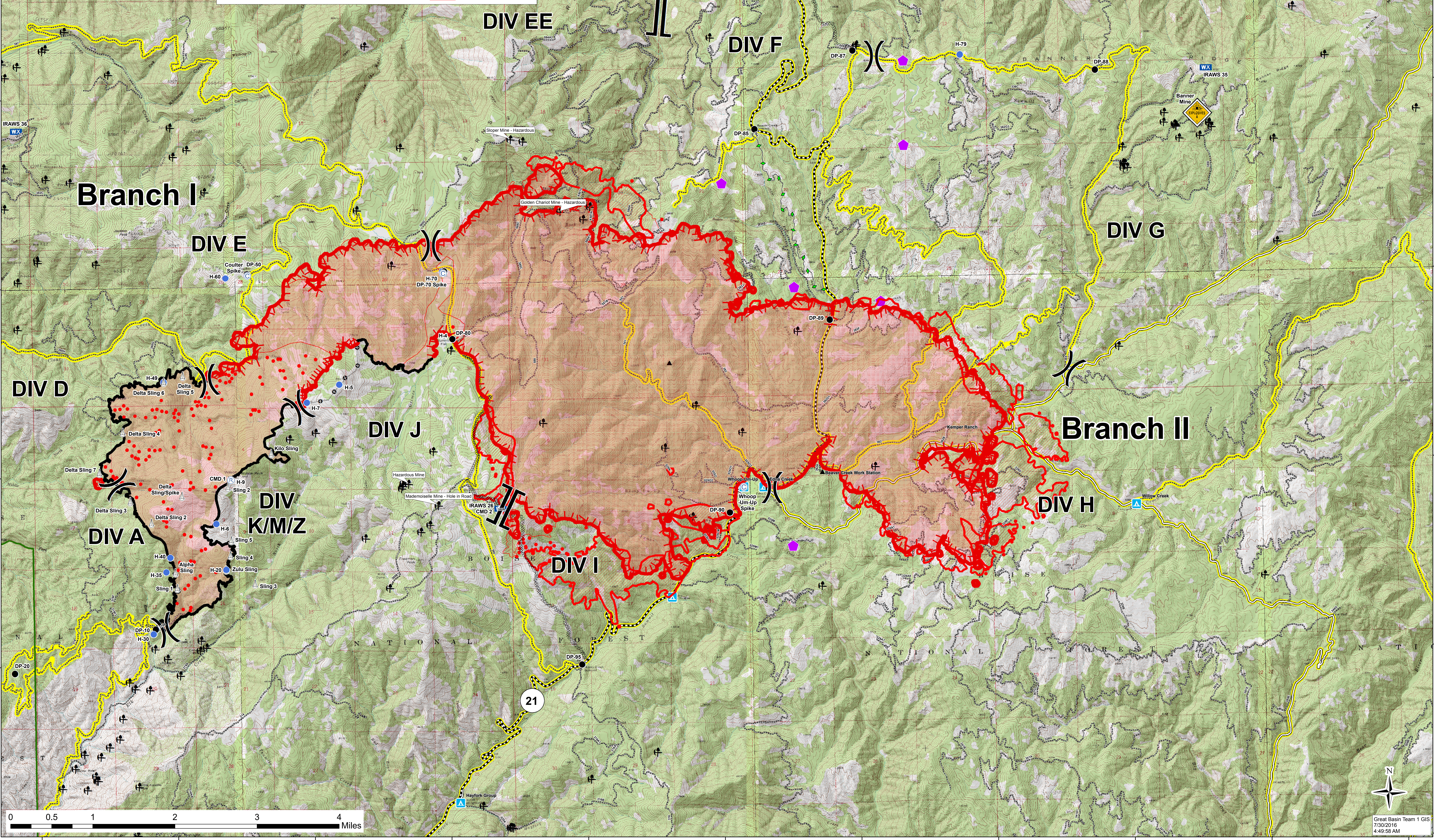


115°48'0"W 115°46'0"W 115°44'0"W 115°42'0"W 115°40'0"W 115°38'0"W 115°36'0"W 115°34'0"W 115°32'0"W 115°30'0"W 115°28'0"W

Pioneer Fire
ID-BOF-000539
Operations Map
July 30, 2016
NAD 83 11N
18,933 Acres
IR @ 7/30/16 - 0010



	Town		Uncontrolled Fire Edge
	Highway		Completed Dozer Line
	All Vehicle Roads		Completed Line
	High Clearance Roads		Constructed Fuel Break
	Division		Confinement Line
	Branch		IR Isolated Heat
	Camp		Yurt
	Drop Point		Campground
	Helispot		Structure
	Mobile Weather Unit		Recreation Residence
	Repeater		Mine
	Sling Site		IR Intense Heat
	HazMat Explosives		IR Scattered Heat



115°48'0"W 115°46'0"W 115°44'0"W 115°42'0"W 115°40'0"W 115°38'0"W 115°36'0"W 115°34'0"W 115°32'0"W 115°30'0"W 115°28'0"W

