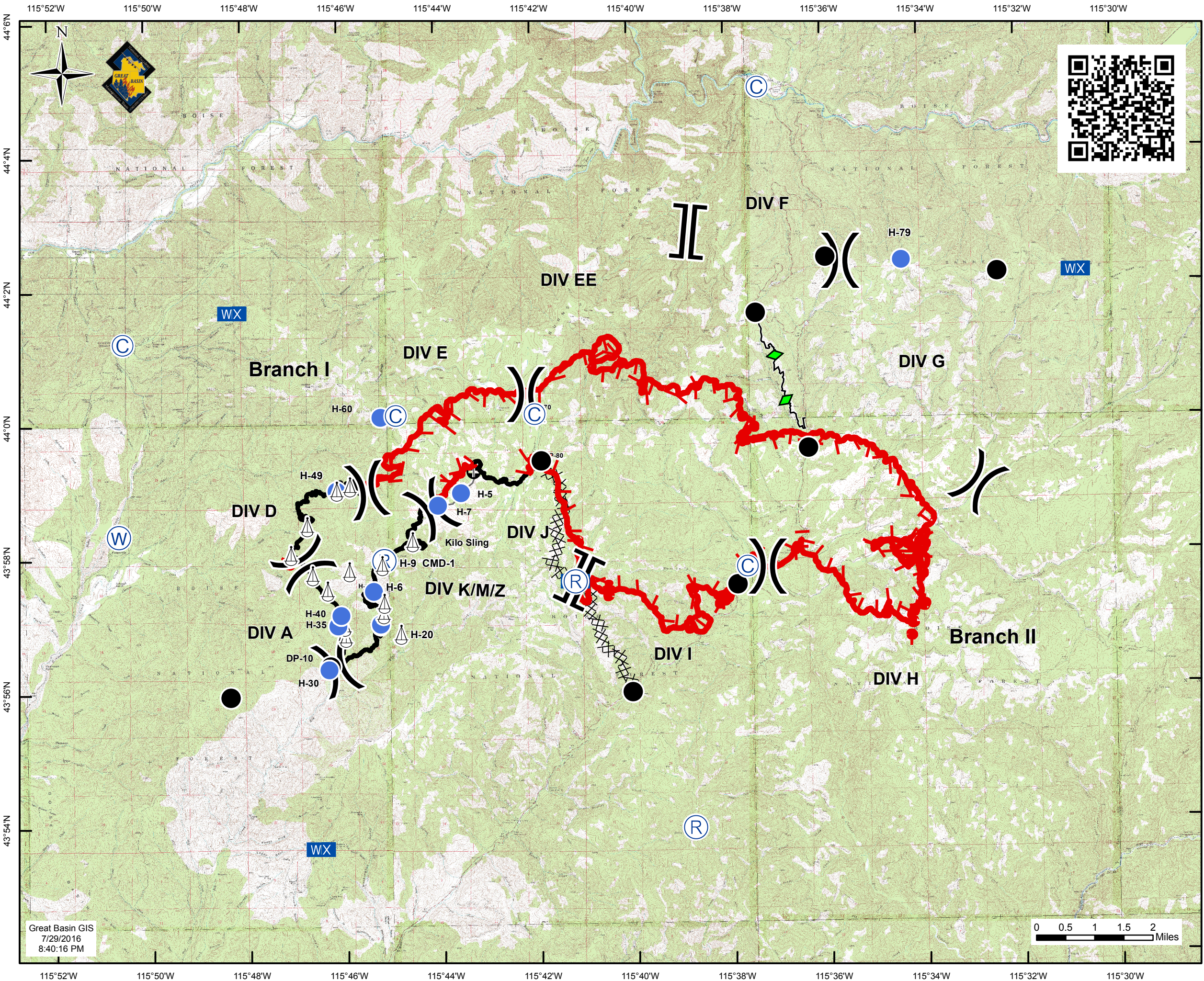


**Pioneer Fire
ID-BOF-000539
Air Ops Map
NAD 83 11N
July 30, 2016
16,204 Acres**



Pioneer Fire ID-BOF-000539

Fire Points	Lat	Long
H-4	43° 59.409'	-115° 41.884'
H-5	43° 58.945'	-115° 43.549'
H-6	43° 57.490'	-115° 45.379'
H-7	43° 58.76'	-115° 44.029'
H-9	43° 57.952'	-115° 45.157'
H-20	43° 57.002'	-115° 45.243'
H-30	43° 56.331'	-115° 46.320'
H-35	43° 56.985'	-115° 46.123'
H-40	43° 57.138'	-115° 46.060'
H-49	43° 58.996'	-115° 46.123'
H-60	44° 00.088'	-115° 45.196'
H-70	44° 00.125'	-115° 42.017'
H-79	44° 2.337'	-115° 34.380'
Alpha Sling	43° 56.979'	-115° 45.991'
Delta Sling	43° 57.788'	-115° 45.883'
Delta Sling 2	43° 57.507'	-115° 46.335'
Delta Sling 3	43° 57.739'	-115° 46.640'
Delta Sling 4	43° 58.473'	-115 46.738'
Delta Sling 5	43° 59.057'	-115 45.847'
Delta Sling 6	43° 58.996'	-115 46.123'
Delta Sling 7	43° 58.045'	-115 47.087'
Kilo Sling	43° 58.225'	-115° 44.565'
Zulu Sling	43° 57.001'	-115° 45.250'
Sling 1	43° 56.813'	-115° 45.968'
Sling 2	43° 57.873'	-115° 45.204'
Sling 3	43° 56.847'	-115° 44.829'
Sling 4	43° 57.154'	-115° 45.183'
Sling 5	43° 57.311'	-115° 45.169'
Grimes Dip	43° 58.350'	-115° 50.629'
Camp	43° 57.935'	-115° 45.109'
Coulter Spike	44° 00.154'	-115° 44.933'
Pioneer Spike	44° 01.226'	-115° 50.510'
Lowman Spike	44° 04.945'	-115° 37.306'
CMD 1	43° 57.952'	-115° 45.157'
CMD 2	43° 57.603'	-115° 41.212'
CMD 4	43° 53.910'	-115° 38.805'
DP-10	43° 56.381'	-115° 46.290'
DP-20	43° 55.934'	-115° 48.361'
DP-50	44° 00.128'	-115° 44.882'
DP-80	43° 59.409'	-115° 41.884'
DP-85	44° 01.579'	-115° 37.404'
DP-89	44° 01.550'	-115° 36.350'
DP-90	43° 57.529'	-115° 37.857'
DP-95	43° 55.944'	-115° 40.055'



FirePoint PTType	AssignmentBreak BreakType
Camp	Division
Drop Point	Branch
Helispot	
Mobile Weather Unit	
Repeater	
Sling Site	Uncontrolled Fire Edge
Water Source	Completed Dozer Line
	Completed Line
	Plow Line
	Other

Great Basin GIS
7/29/2016
8:40:16 PM

