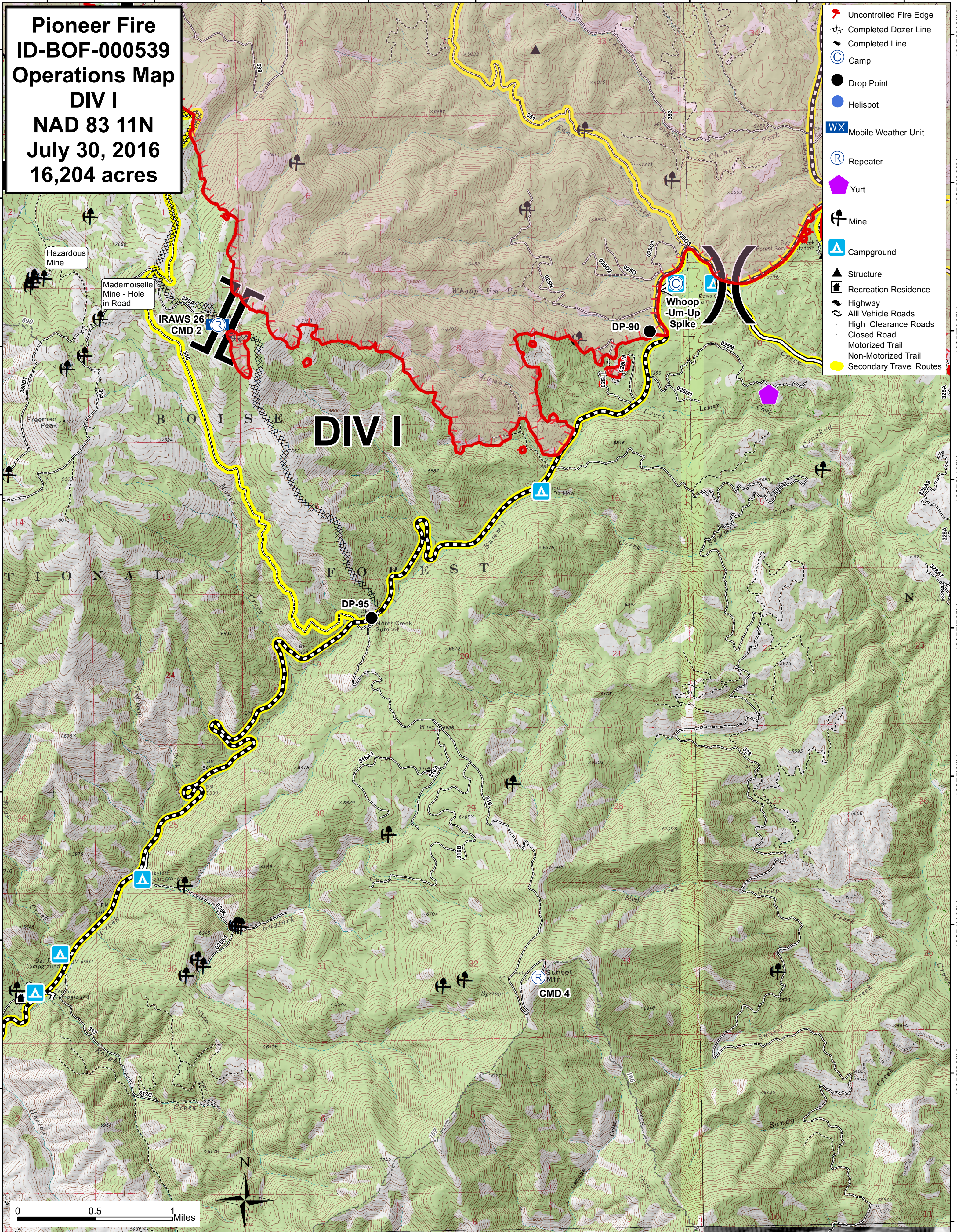


115°42'30"W 115°41'40"W 115°40'50"W 115°40'0"W 115°39'10"W 115°38'20"W 115°37'30"W 115°36'40"W 115°35'50"W

Pioneer Fire
ID-BOF-000539
Operations Map
DIV I
NAD 83 11N
July 30, 2016
16,204 acres

- Uncontrolled Fire Edge
- Completed Dozer Line
- Completed Line
- Camp
- Drop Point
- Helispot
- Mobile Weather Unit
- Repeater
- Yurt
- Mine
- Campground
- Structure
- Recreation Residence
- Highway
- All Vehicle Roads
- High Clearance Roads
- Closed Road
- Motorized Trail
- Non-Motorized Trail
- Secondary Travel Routes



DIV I

BOISE

TIONA

FOREST

115°42'30"W 115°41'40"W 115°40'50"W 115°40'0"W 115°39'10"W 115°38'20"W 115°37'30"W 115°36'40"W 115°35'50"W

43°59'10"N
43°58'20"N
43°57'30"N
43°56'40"N
43°55'50"N
43°55'00"N
43°54'10"N
43°53'20"N

43°59'10"N
43°58'20"N
43°57'30"N
43°56'40"N
43°55'50"N
43°55'00"N
43°54'10"N
43°53'20"N