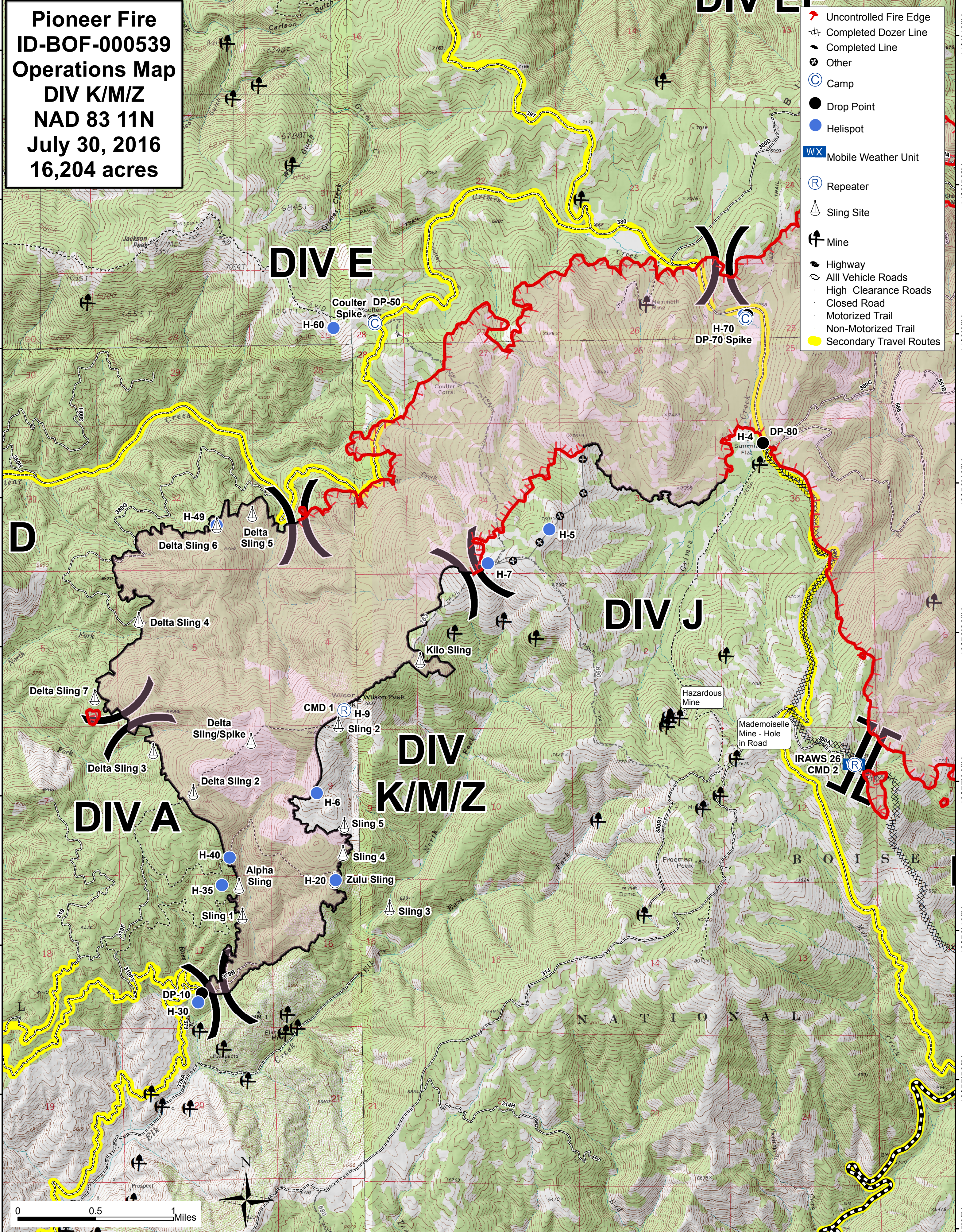


115°47'30"W 115°46'40"W 115°45'50"W 115°45'0"W 115°44'10"W 115°43'20"W 115°42'30"W 115°41'40"W 115°40'50"W

Pioneer Fire
ID-BOF-000539
Operations Map
DIV K/M/Z
NAD 83 11N
July 30, 2016
16,204 acres

- Uncontrolled Fire Edge
- Completed Dozer Line
- Completed Line
- Other
- Camp
- Drop Point
- Helispot
- Mobile Weather Unit
- Repeater
- Sling Site
- Mine
- Highway
- All Vehicle Roads
- High Clearance Roads
- Closed Road
- Motorized Trail
- Non-Motorized Trail
- Secondary Travel Routes



115°47'30"W 115°46'40"W 115°45'50"W 115°45'0"W 115°44'10"W 115°43'20"W 115°42'30"W 115°41'40"W 115°40'50"W