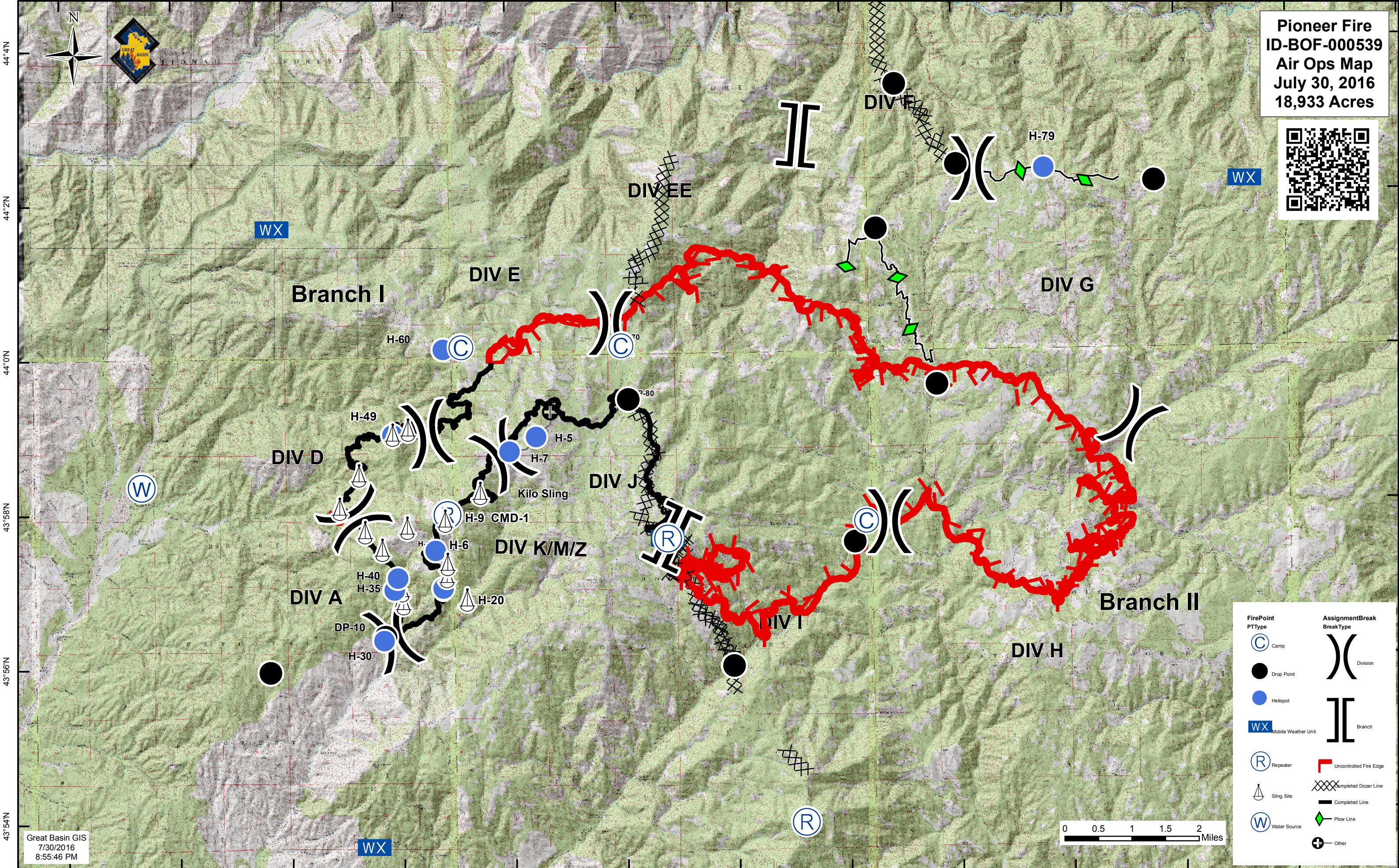


115°52'W 115°50'W 115°48'W 115°46'W 115°44'W 115°42'W 115°40'W 115°38'W 115°36'W 115°34'W 115°32'W 115°30'W 115°28'W



Pioneer Fire
ID-BOF-000539
Air Ops Map
July 30, 2016
18,933 Acres



44°4'N
44°2'N
44°0'N
43°58'N
43°56'N
43°54'N

44°4'N
44°2'N
44°0'N
43°58'N
43°56'N
43°54'N

FirePoint PTType	AssignmentBreak BreakType



Great Basin GIS
7/30/2016
8:55:46 PM

115°52'W 115°50'W 115°48'W 115°46'W 115°44'W 115°42'W 115°40'W 115°38'W 115°36'W 115°34'W 115°32'W 115°30'W