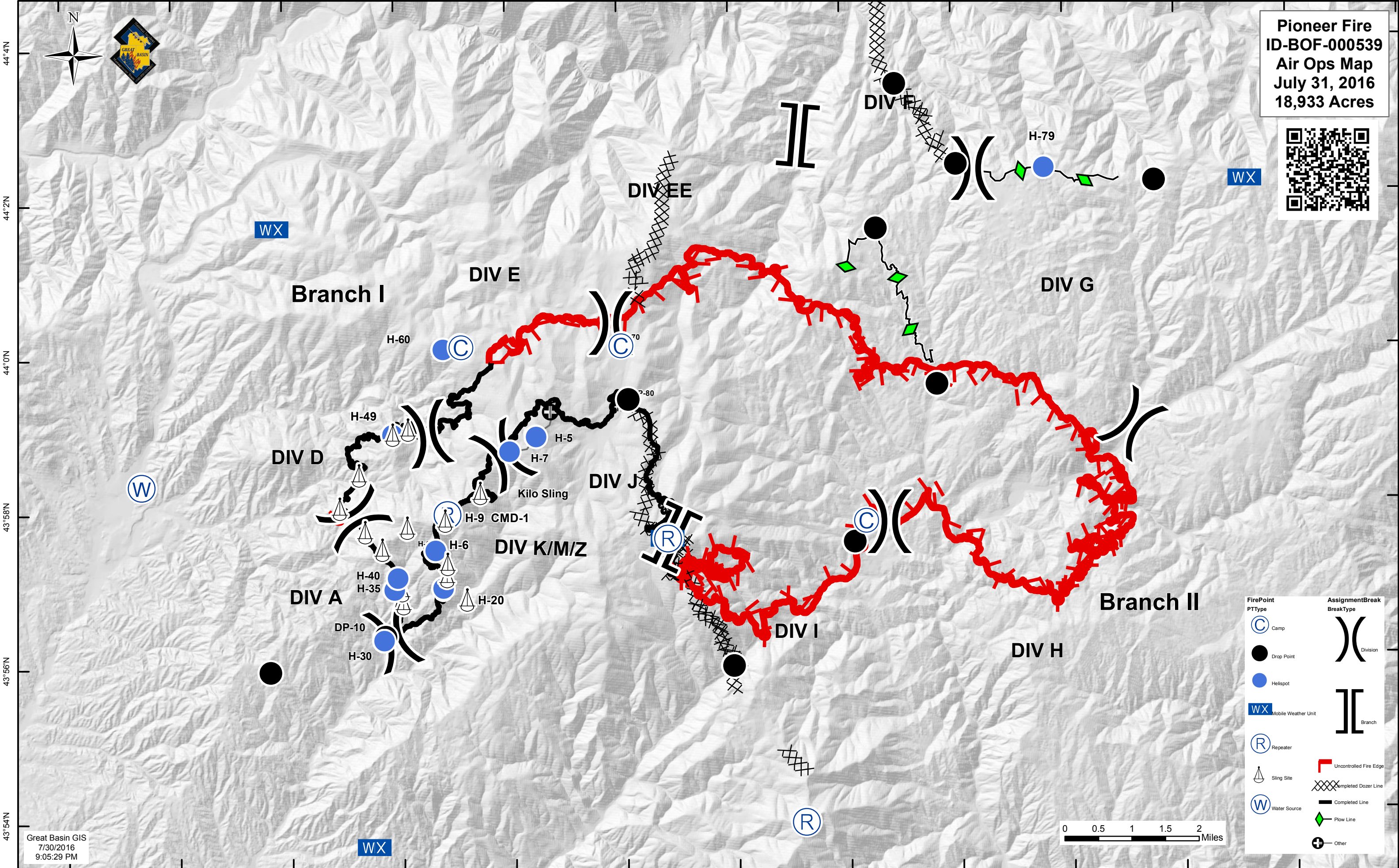
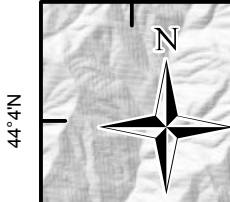


115°52'W 115°50'W 115°48'W 115°46'W 115°44'W 115°42'W 115°40'W 115°38'W 115°36'W 115°34'W 115°32'W 115°30'W 115°28'W



Pioneer Fire
ID-BOF-000539
Air Ops Map
July 31, 2016
18,933 Acres



115°52'W 115°50'W 115°48'W 115°46'W 115°44'W 115°42'W 115°40'W 115°38'W 115°36'W 115°34'W 115°32'W 115°30'W

Great Basin GIS
7/30/2016
9:05:29 PM



FirePoint PTType	AssignmentBreak BreakType

43°54'N

43°56'N

43°58'N

44°0'N

44°2'N

44°4'N

43°54'N

43°56'N

43°58'N

44°0'N

44°2'N

44°4'N