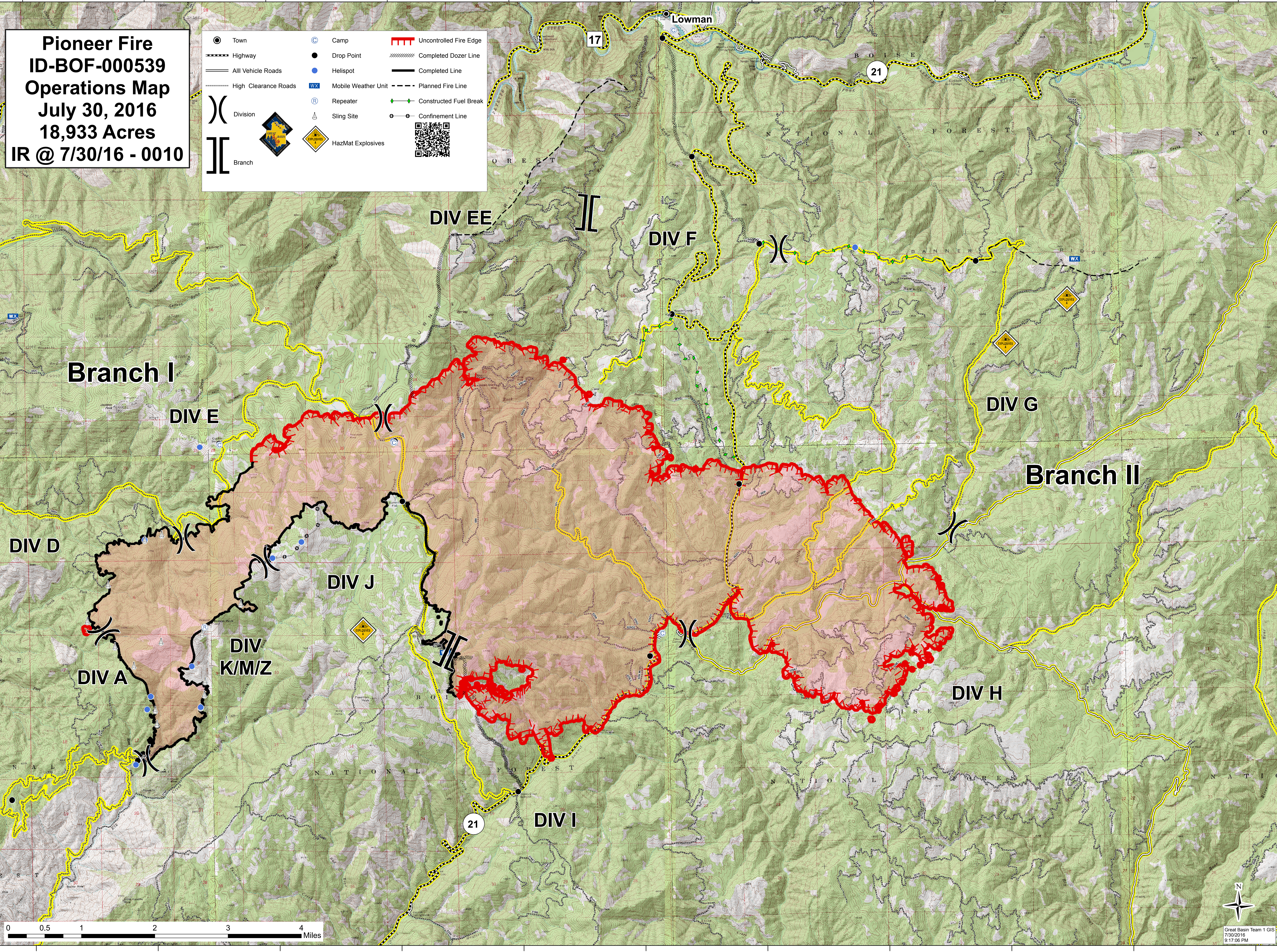


115°48'0"W 115°46'0"W 115°44'0"W 115°42'0"W 115°40'0"W 115°38'0"W 115°36'0"W 115°34'0"W 115°32'0"W 115°30'0"W 115°28'0"W

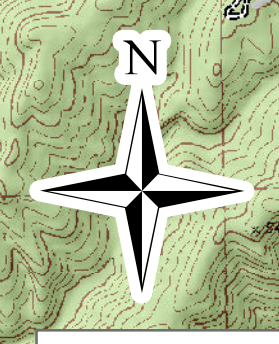


Pioneer Fire
ID-BOF-000539
Operations Map
July 30, 2016
18,933 Acres
IR @ 7/30/16 - 0010

Town	Camp	Uncontrolled Fire Edge
Highway	Drop Point	Completed Dozer Line
All Vehicle Roads	Helispot	Completed Line
High Clearance Roads	Mobile Weather Unit	Planned Fire Line
Division	Repeater	Constructed Fuel Break
Branch	Sling Site	Confinement Line
Explosive	HazMat Explosives	

115°48'0"W 115°46'0"W 115°44'0"W 115°42'0"W 115°40'0"W 115°38'0"W 115°36'0"W 115°34'0"W 115°32'0"W 115°30'0"W 115°28'0"W

0 0.5 1 2 3 4 Miles



Great Basin Team 1 GIS
7/30/2016
9:17:06 PM