

115°38'W

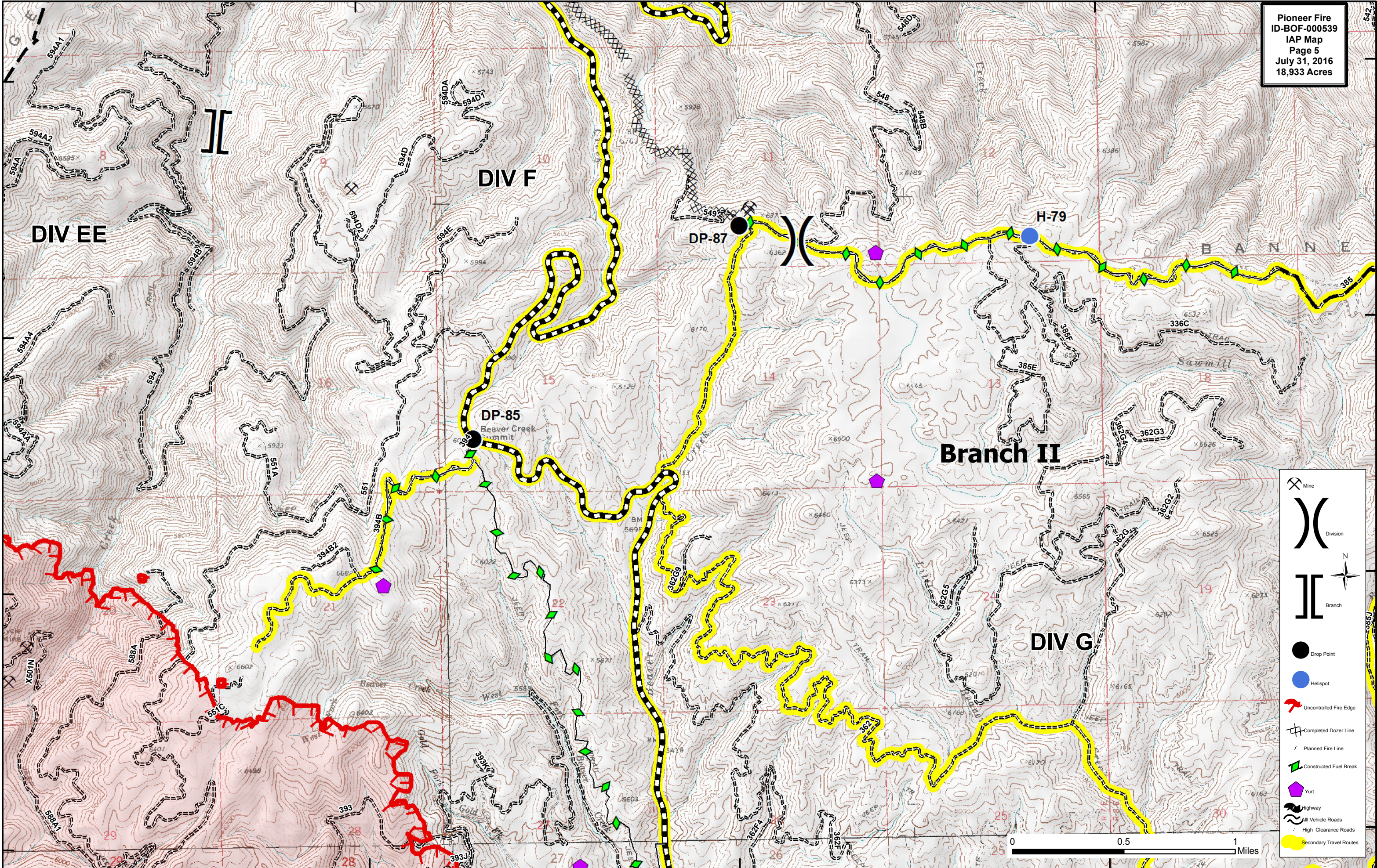
115°36'W

115°34'W

Pioneer Fire
ID-BOF-000539
IAP Map
Page 5
July 31, 2016
18,933 Acres

44°3'N
44°2'N
44°1'N
44°0'N

44°3'N
44°2'N
44°1'N
44°0'N



DIV EE

DIV F

Branch II

DIV G

DP-85
Beaver Creek
Summit

DP-87

H-79

- Mine
- Division
- Branch
- Drop Point
- Helispot
- Uncontrolled Fire Edge
- Completed Dozer Line
- Planned Fire Line
- Constructed Fuel Break
- Yurt
- Highway
- All Vehicle Roads
- High Clearance Roads
- Secondary Travel Routes

0 0.5 1 Miles

115°38'W

115°36'W

115°34'W