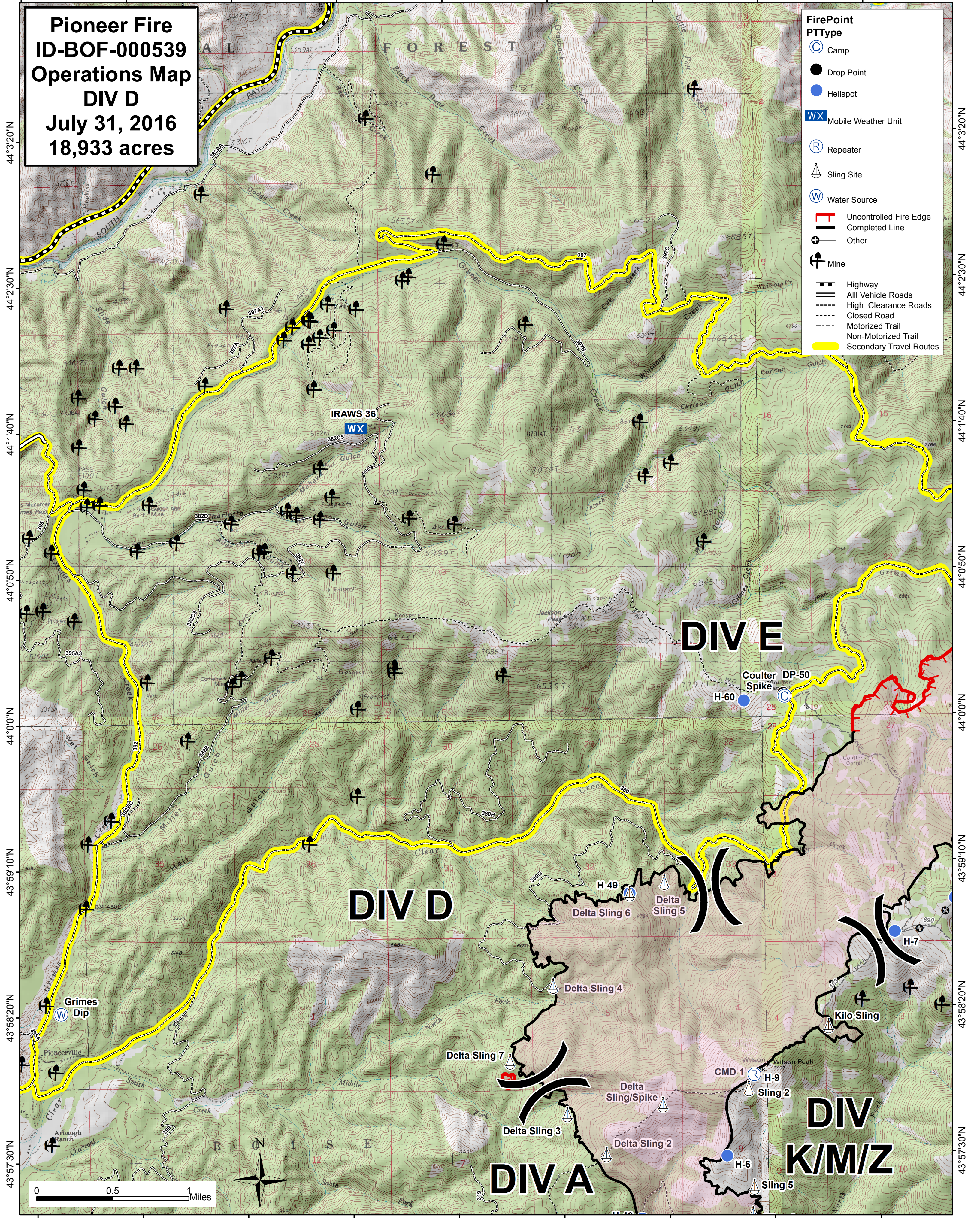


115°50'50"W 115°50'0"W 115°49'10"W 115°48'20"W 115°47'30"W 115°46'40"W 115°45'50"W 115°45'0"W 115°44'10"W

Pioneer Fire
ID-BOF-000539
Operations Map
DIV D
July 31, 2016
18,933 acres

- FirePoint**
PTType
- ⊙ Camp
 - Drop Point
 - Helispot
 - WX Mobile Weather Unit
 - Ⓡ Repeater
 - ⚓ Sling Site
 - Ⓜ Water Source
 - ▬ Uncontrolled Fire Edge
 - ▬ Completed Line
 - ⊕ Other
 - ⚡ Mine
 - ▬ Highway
 - ▬ All Vehicle Roads
 - ▬ High Clearance Roads
 - ▬ Closed Road
 - ▬ Motorized Trail
 - ▬ Non-Motorized Trail
 - ▬ Secondary Travel Routes



115°50'50"W 115°50'0"W 115°49'10"W 115°48'20"W 115°47'30"W 115°46'40"W 115°45'50"W 115°45'0"W 115°44'10"W

44°3'20"N
44°2'30"N
44°1'40"N
44°0'50"N
44°0'0"N
43°59'10"N
43°58'20"N
43°57'30"N

44°3'20"N
44°2'30"N
44°1'40"N
44°0'50"N
44°0'0"N
43°59'10"N
43°58'20"N
43°57'30"N