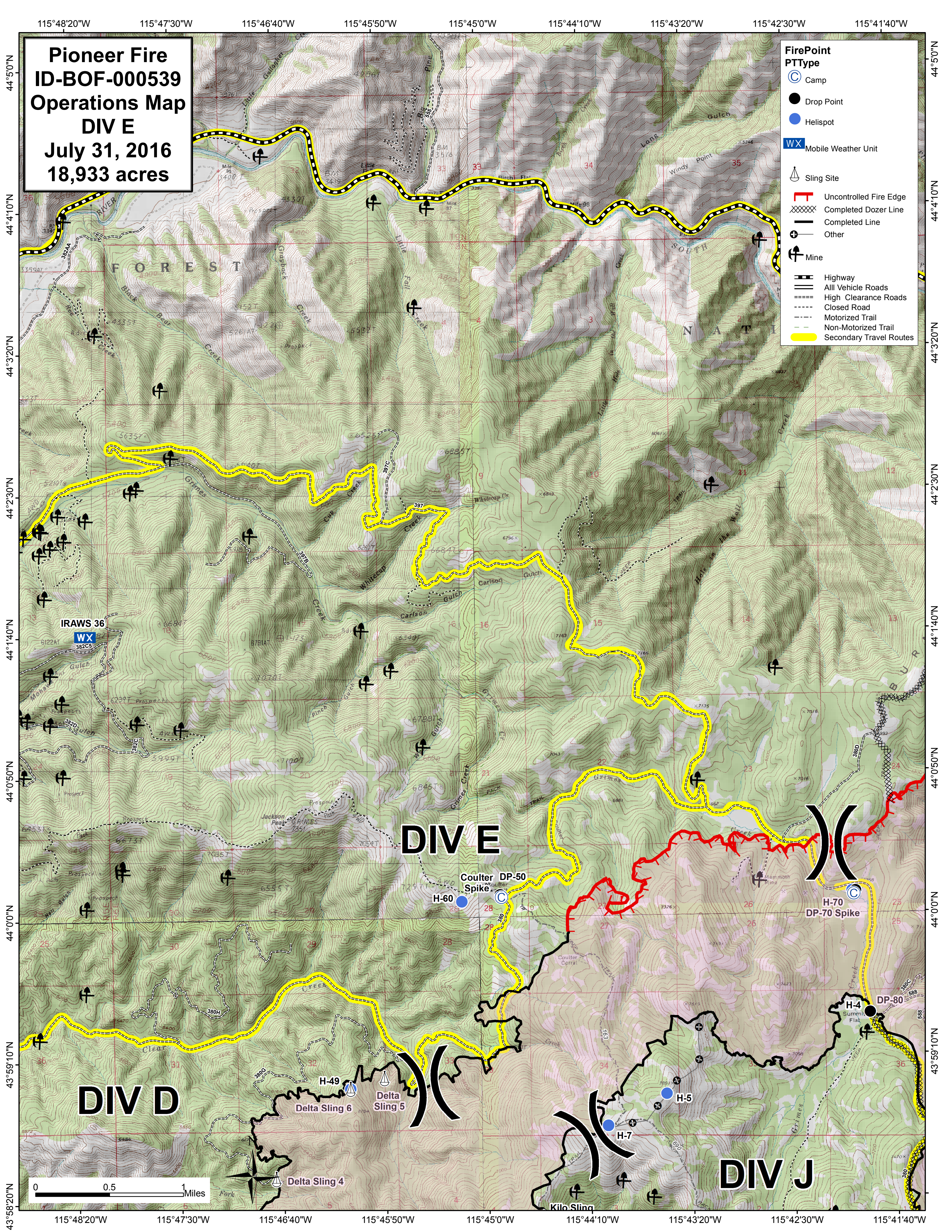


115°48'20"W 115°47'30"W 115°46'40"W 115°45'50"W 115°45'0"W 115°44'10"W 115°43'20"W 115°42'30"W 115°41'40"W

Pioneer Fire
ID-BOF-000539
Operations Map
DIV E
July 31, 2016
18,933 acres

- FirePoint**
PTType
- Camp
 - Drop Point
 - Helispot
 - Mobile Weather Unit
 - Sling Site
 - Uncontrolled Fire Edge
 - Completed Dozer Line
 - Completed Line
 - Other
 - Mine
 - Highway
 - All Vehicle Roads
 - High Clearance Roads
 - Closed Road
 - Motorized Trail
 - Non-Motorized Trail
 - Secondary Travel Routes



43°58'20"N

0 0.5 1 Miles

115°48'20"W 115°47'30"W 115°46'40"W 115°45'50"W 115°45'0"W 115°44'10"W 115°43'20"W 115°42'30"W 115°41'40"W

43°59'10"N

DIV D

DIV E

DIV J

44°0'0"N

H-60
Coulter Spike
DP-50
H-70
DP-70 Spike

H-49
Delta Sling 6
Delta Sling 5

H-5
H-7

H-4
DP-80

44°0'50"N

IRAWS 36
WX
382CS

44°1'40"N

44°2'30"N

44°3'20"N

44°4'10"N

44°5'0"N