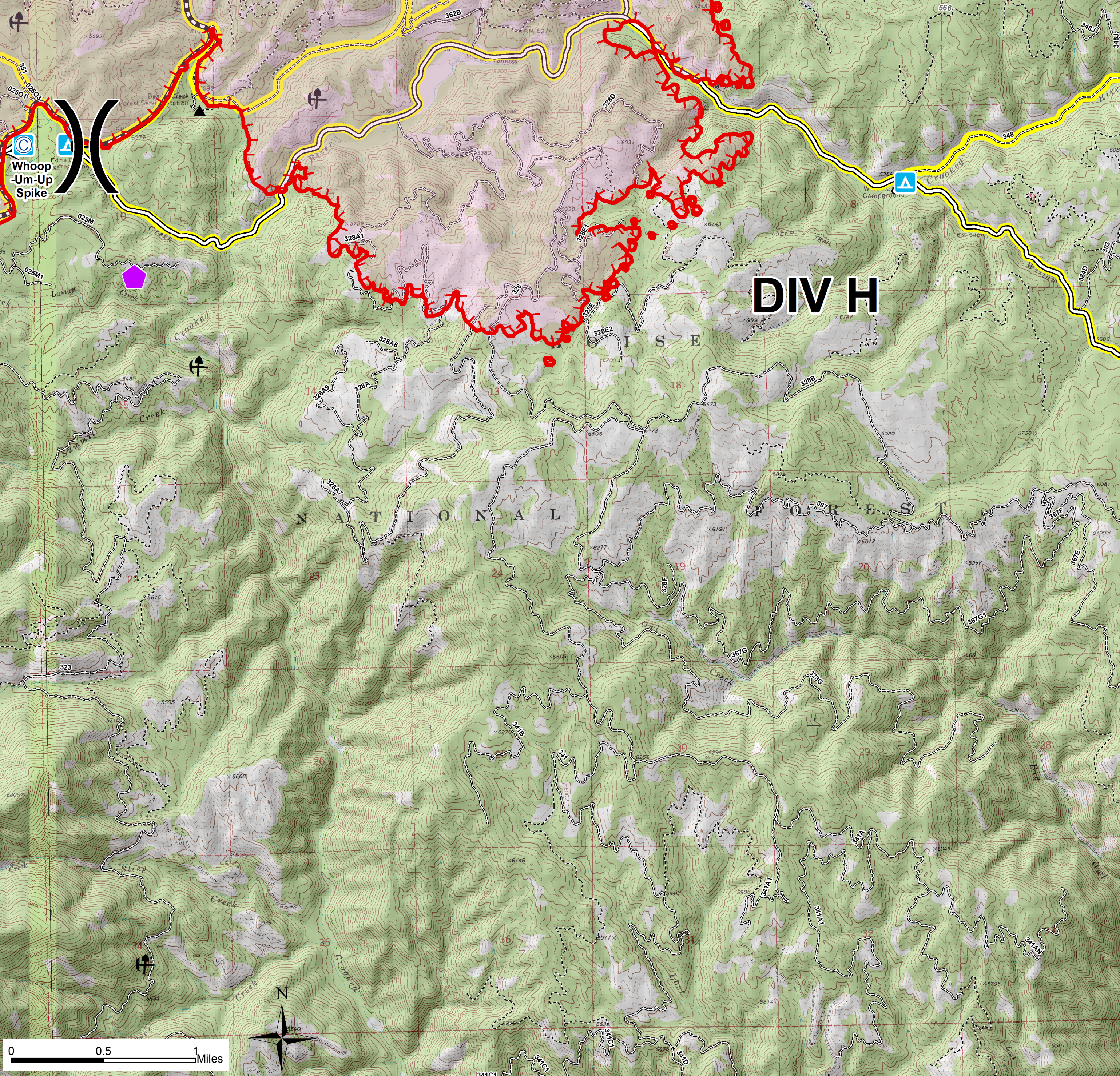


115°37'30"W 115°36'40"W 115°35'50"W 115°35'0"W 115°34'10"W 115°33'20"W 115°32'30"W 115°31'40"W 115°30'50"W

**Pioneer Fire**  
**ID-BOF-000539**  
**Operations Map**  
**DIV H**  
**July 31, 2016**  
**18,933 acres**

- FirePoint**  
**PTType**
- Camp
  - Drop Point
  - Uncontrolled Fire Edge
  - Plow Line
  - Yurt
  - Mine
  - Campground
  - Structure
  - Highway
  - All Vehicle Roads
  - High Clearance Roads
  - Closed Road
  - Motorized Trail
  - Non-Motorized Trail
  - Secondary Travel Routes



115°37'30"W 115°36'40"W 115°35'50"W 115°35'0"W 115°34'10"W 115°33'20"W 115°32'30"W 115°31'40"W 115°30'50"W

44°0'0"N  
43°59'10"N  
43°58'20"N  
43°57'30"N  
43°56'40"N  
43°55'50"N  
43°55'0"N  
43°54'10"N  
43°53'20"N

44°0'0"N  
43°59'10"N  
43°58'20"N  
43°57'30"N  
43°56'40"N  
43°55'50"N  
43°55'0"N  
43°54'10"N  
43°53'20"N