


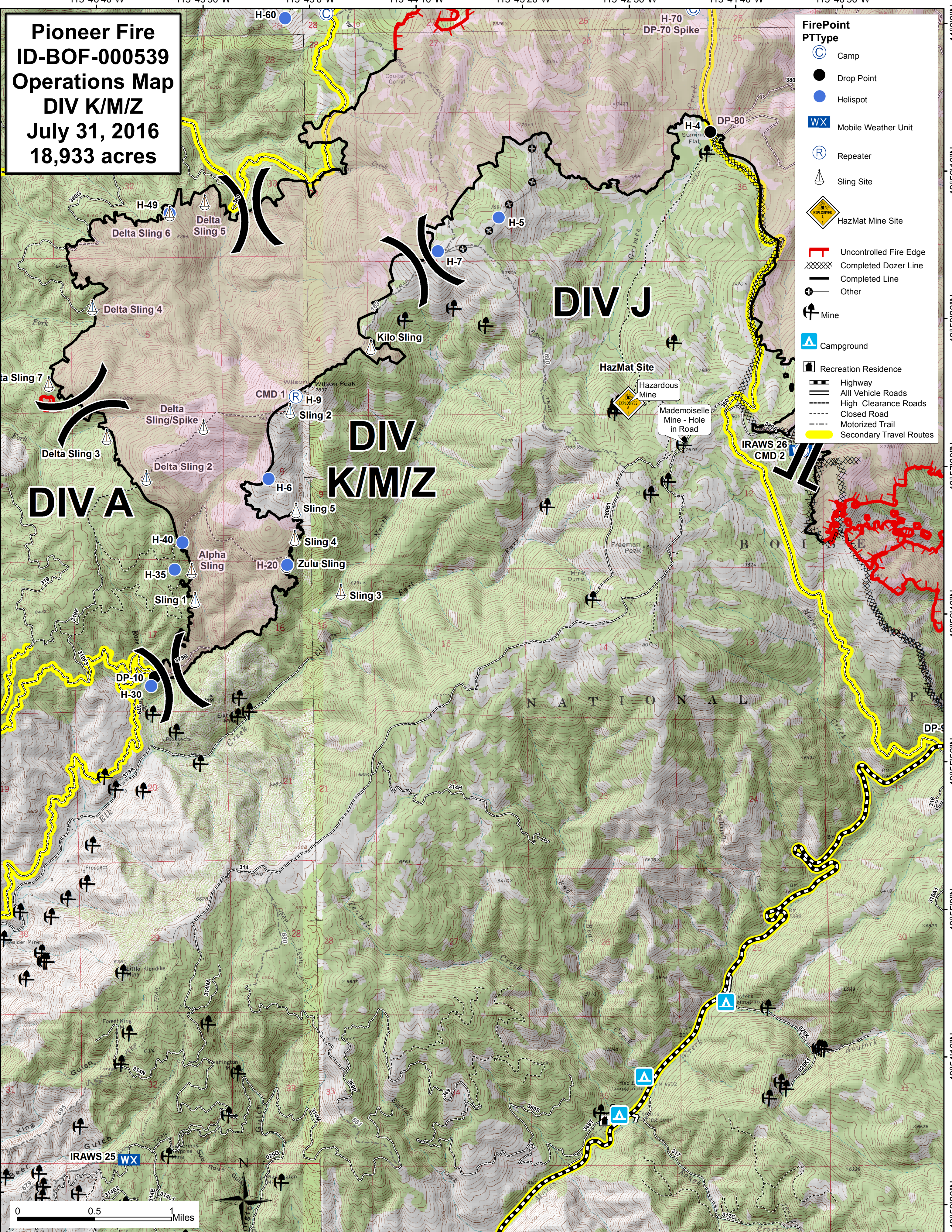


Pioneer Fire
ID-BOF-000539
Operations Map
DIV K/M/Z
July 31, 2016
18,933 acres

- FirePoint**
PTType
-  Camp
 -  Drop Point
 -  Helispot
 -  Mobile Weather Unit
 -  Repeater
 -  Sling Site
 -  HazMat Mine Site
 -  Uncontrolled Fire Edge
 -  Completed Dozer Line
 -  Completed Line
 -  Other
 -  Mine
 -  Campground
 -  Recreation Residence
 -  Highway
 -  All Vehicle Roads
 -  High Clearance Roads
 -  Closed Road
 -  Motorized Trail
 -  Secondary Travel Routes



115°47'30"W 115°46'40"W 115°45'50"W 115°45'0"W 115°44'10"W 115°43'20"W 115°42'30"W 115°41'40"W 115°40'50"W

44°00'N
43°59'10"N
43°58'20"N
43°57'30"N
43°56'40"N
43°55'50"N
43°55'0"N
43°54'10"N
43°53'20"N

44°00'N
43°59'10"N
43°58'20"N
43°57'30"N
43°56'40"N
43°55'50"N
43°55'0"N
43°54'10"N
43°53'20"N