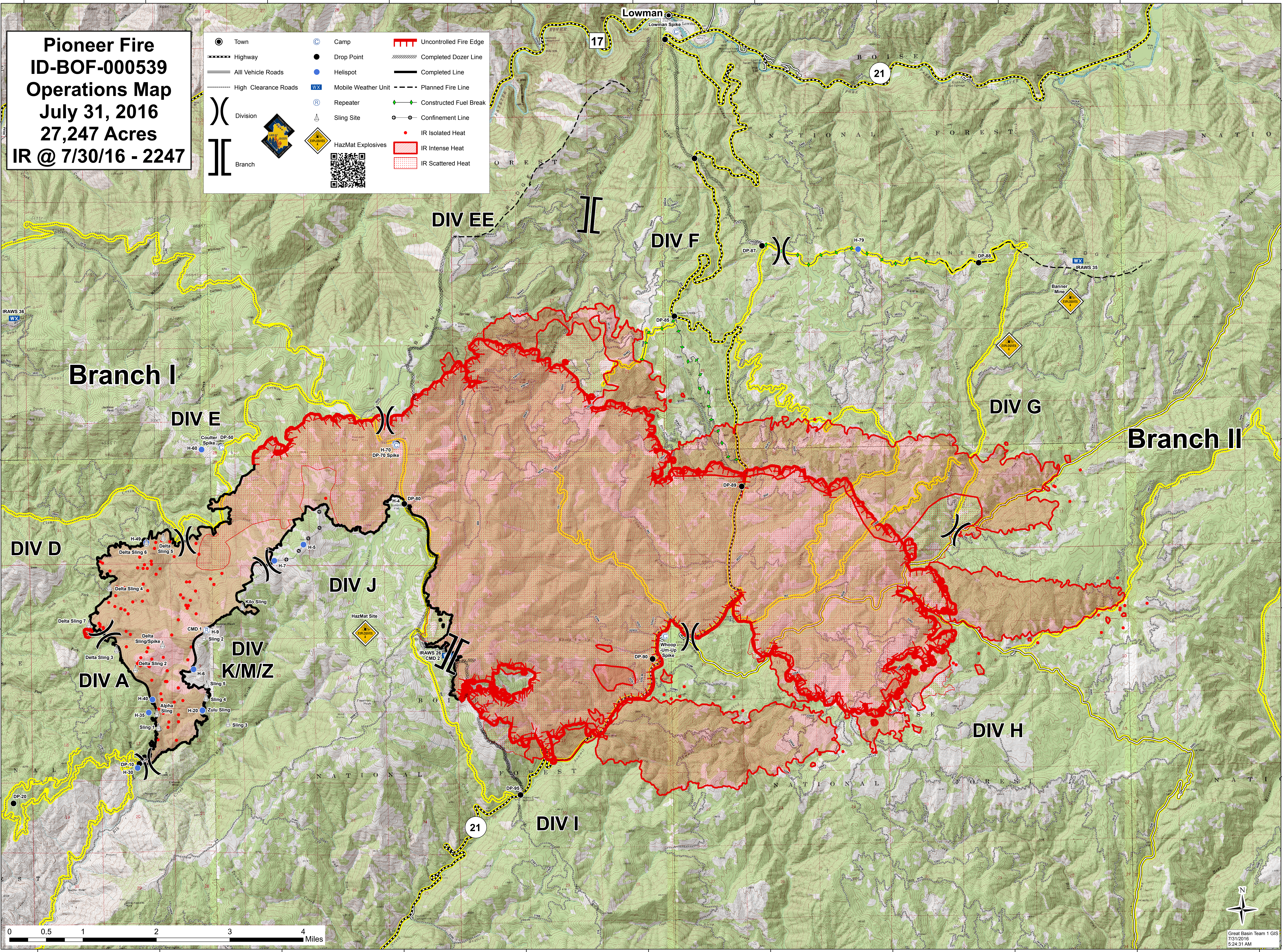


115°48'0"W 115°46'0"W 115°44'0"W 115°42'0"W 115°40'0"W 115°38'0"W 115°36'0"W 115°34'0"W 115°32'0"W 115°30'0"W 115°28'0"W



**Pioneer Fire**  
**ID-BOF-000539**  
**Operations Map**  
**July 31, 2016**  
**27,247 Acres**  
**IR @ 7/30/16 - 2247**

Town	Camp	Uncontrolled Fire Edge
Highway	Drop Point	Completed Dozer Line
All Vehicle Roads	Helispot	Completed Line
High Clearance Roads	Mobile Weather Unit	Planned Fire Line
Division	Repeater	Constructed Fuel Break
Branch	Sling Site	Confinement Line
HazMat Explosives	IR Isolated Heat	IR Intense Heat
	IR Scattered Heat	

**Branch I**

**Branch II**

**DIV E**

**DIV E**

**DIV EE**

**DIV F**

**DIV G**

**DIV D**

**DIV J**

**DIV A**

**DIV K/M/Z**

**DIV H**

**DIV I**

0 0.5 1 2 3 4 Miles



Great Basin Team 1 GIS  
7/31/2016  
5:24:31 AM

115°48'0"W 115°46'0"W 115°44'0"W 115°42'0"W 115°40'0"W 115°38'0"W 115°36'0"W 115°34'0"W 115°32'0"W 115°30'0"W 115°28'0"W