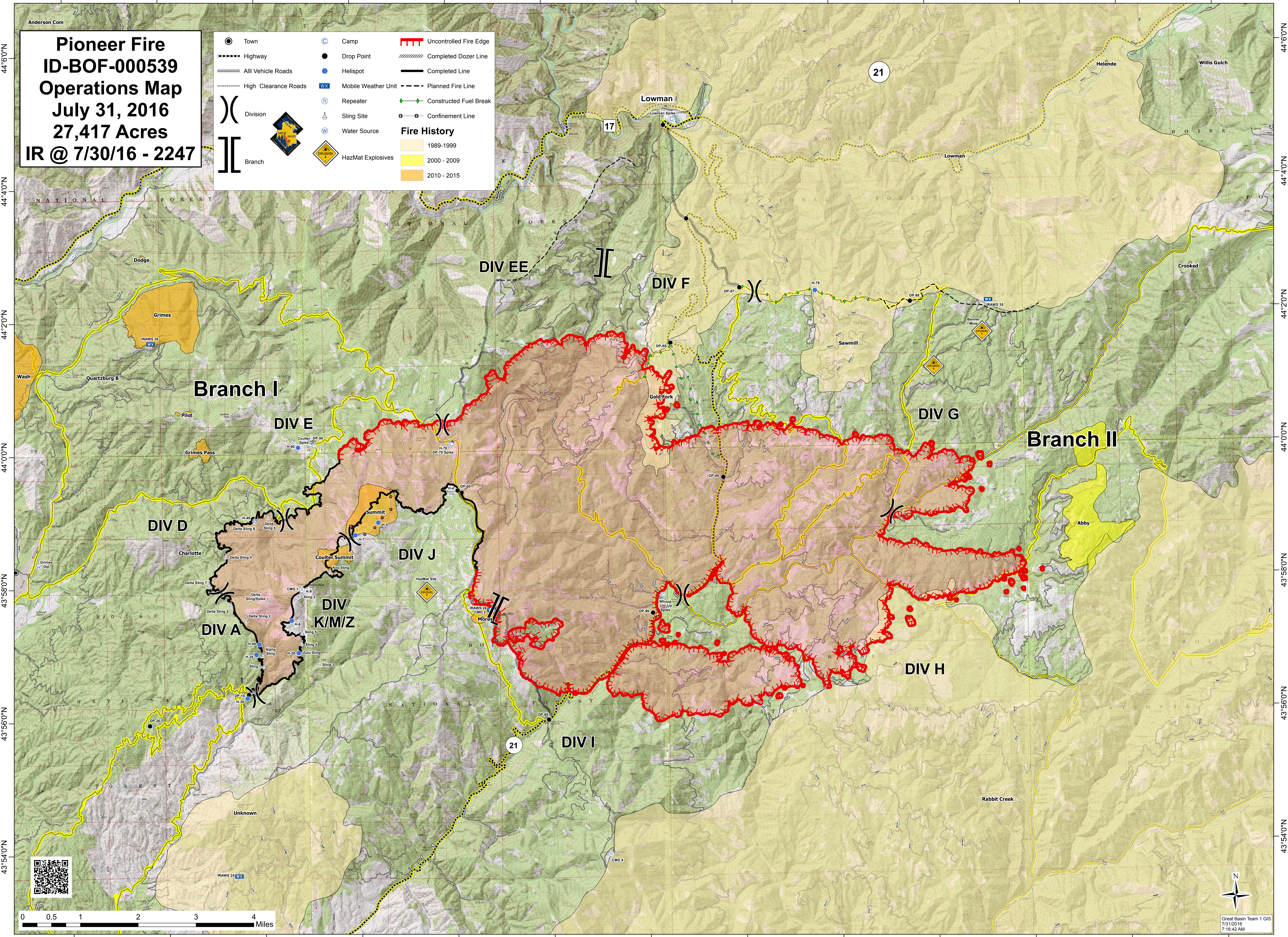


115°50'0"W 115°48'0"W 115°46'0"W 115°44'0"W 115°42'0"W 115°40'0"W 115°38'0"W 115°36'0"W 115°34'0"W 115°32'0"W 115°30'0"W 115°28'0"W 115°26'0"W

# Pioneer Fire ID-BOF-000539 Operations Map July 31, 2016 27,417 Acres IR @ 7/30/16 - 2247

	Town		Camp		Uncontrolled Fire Edge
	Highway		Drop Point		Completed Dozer Line
	All Vehicle Roads		Helispot		Completed Line
	High Clearance Roads		Mobile Weather Unit		Planned Fire Line
	Division		Repeater		Constructed Fuel Break
	Branch		Sling Site		Confinement Line
	HazMat Explosives		Water Source	<b>Fire History</b>	
					1989-1999
					2000-2009
					2010-2015



115°50'0"W 115°48'0"W 115°46'0"W 115°44'0"W 115°42'0"W 115°40'0"W 115°38'0"W 115°36'0"W 115°34'0"W 115°32'0"W 115°30'0"W 115°28'0"W 115°26'0"W

43°54'0"N

43°56'0"N

43°58'0"N

44°2'0"N

44°4'0"N

44°6'0"N

43°54'0"N

43°56'0"N

43°58'0"N

44°2'0"N

44°4'0"N

44°6'0"N

Great Basin Team 1 GIS  
7/31/2016  
7:16:42 AM