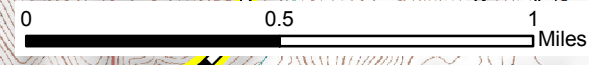
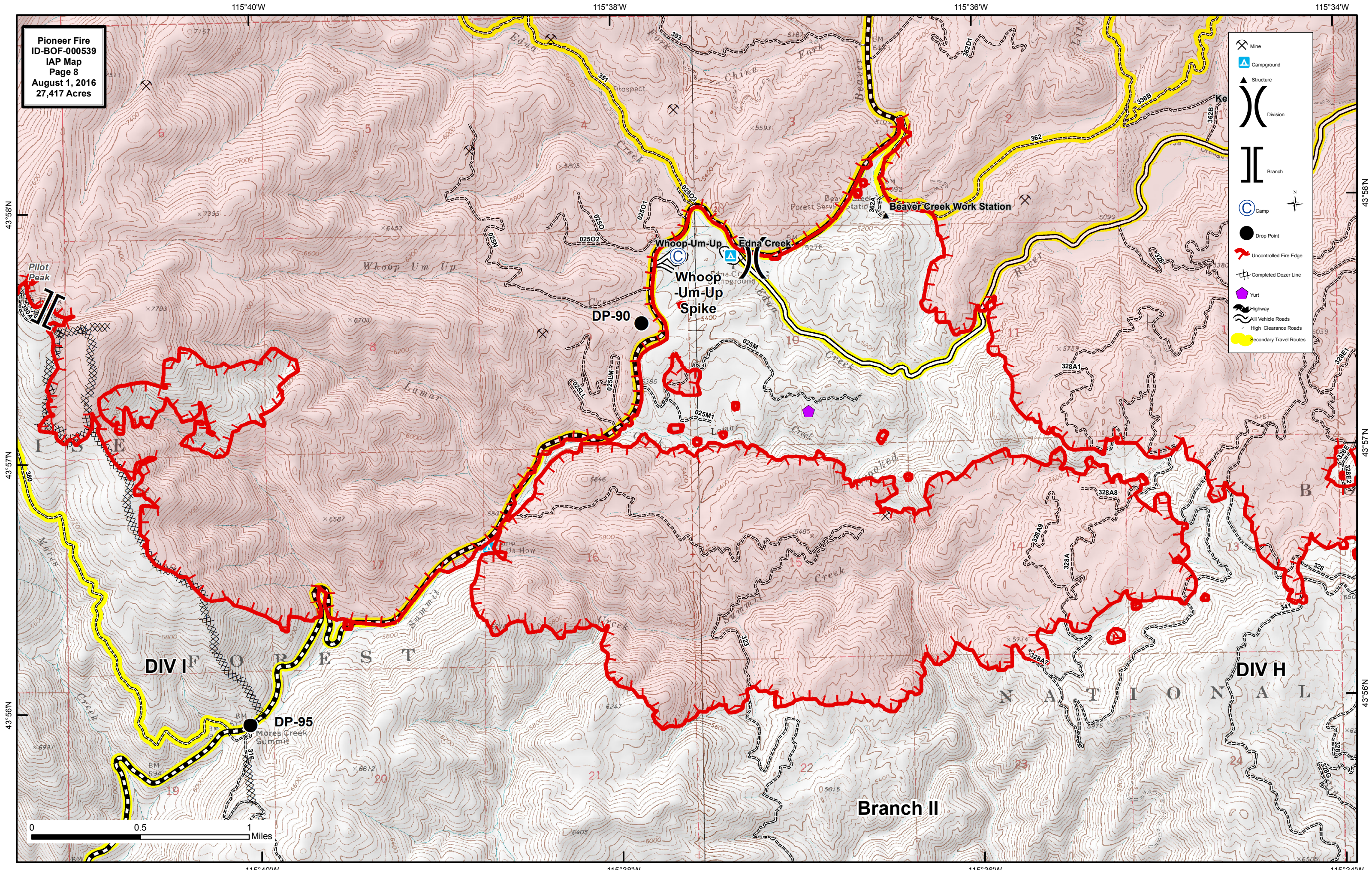


Pioneer Fire
ID-BOF-000539
IAP Map
Page 8
August 1, 2016
27,417 Acres

- Mine
- Campground
- Structure
- Division
- Branch
- Camp
- Drop Point
- Uncontrolled Fire Edge
- Completed Dozer Line
- Yurt
- Highway
- All Vehicle Roads
- High Clearance Roads
- Secondary Travel Routes



115°40'W 115°38'W 115°36'W 115°34'W

43°58'N 43°57'N 43°56'N

Whoop-Um-Up
Edna Creek
Beaver Creek Work Station
Whoop-Um-Up Spike
DP-90
Mores Creek Summit
DP-95
Branch II
DIVISION
NATIONAL