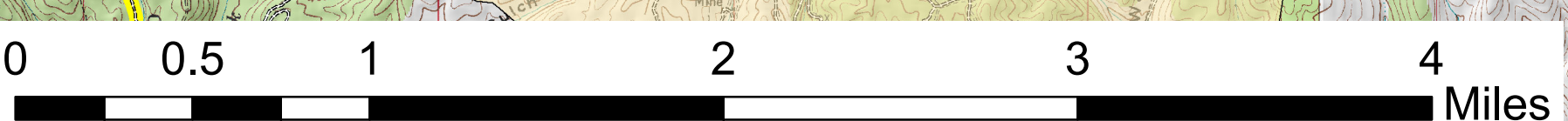
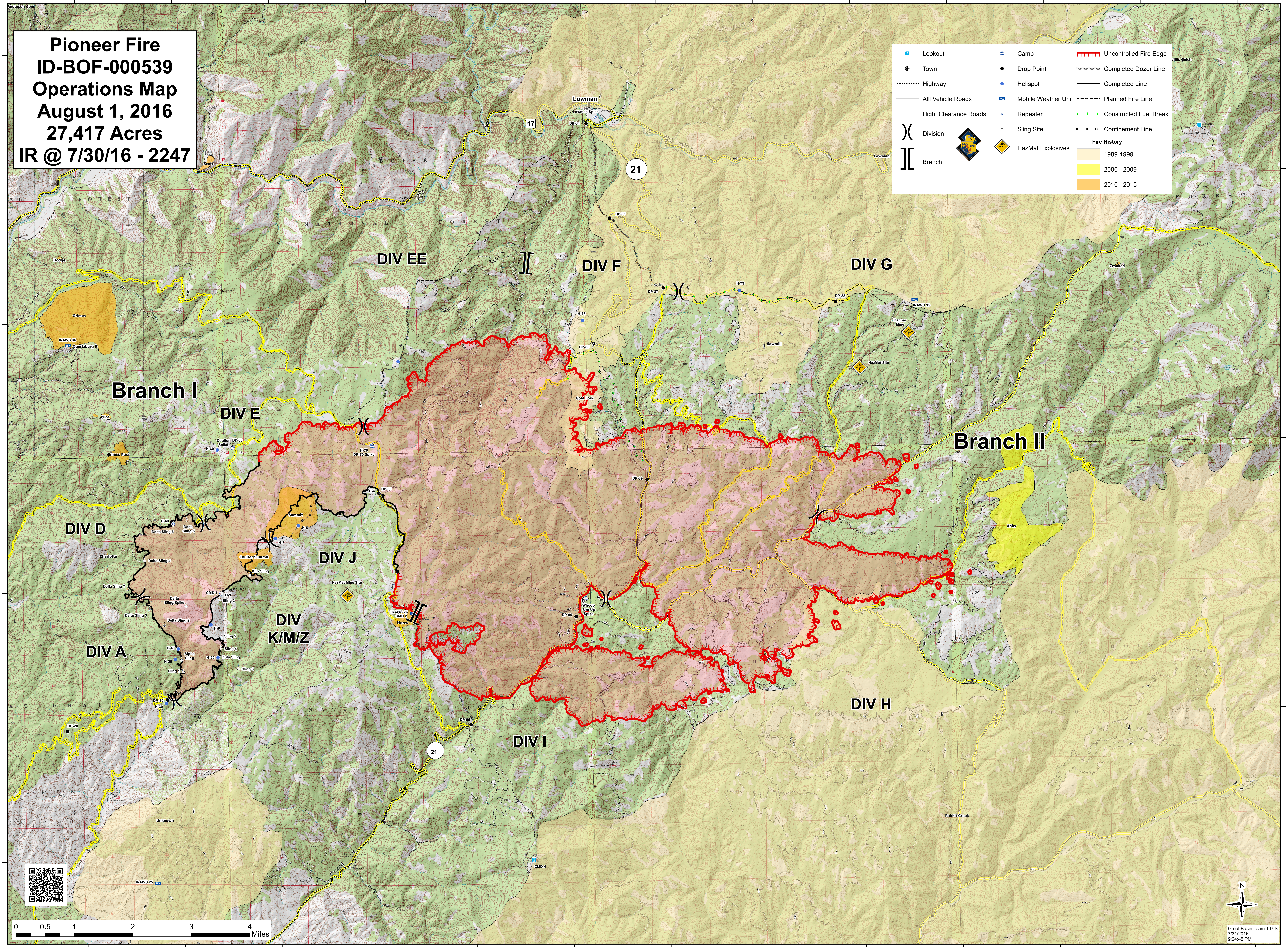


**Pioneer Fire
ID-BOF-000539
Operations Map
August 1, 2016
27,417 Acres
IR @ 7/30/16 - 2247**

	Lookout		Camp		Uncontrolled Fire Edge
	Town		Drop Point		Completed Dozer Line
	Highway		Helispot		Completed Line
	All Vehicle Roads		Mobile Weather Unit		Planned Fire Line
	High Clearance Roads		Repeater		Constructed Fuel Break
	Division		Sling Site		Confinement Line
	Branch		HazMat Explosives	Fire History	
					1989-1999
					2000 - 2009
					2010 - 2015



Great Basin Team 1 GIS
7/31/2016
9:24:45 PM