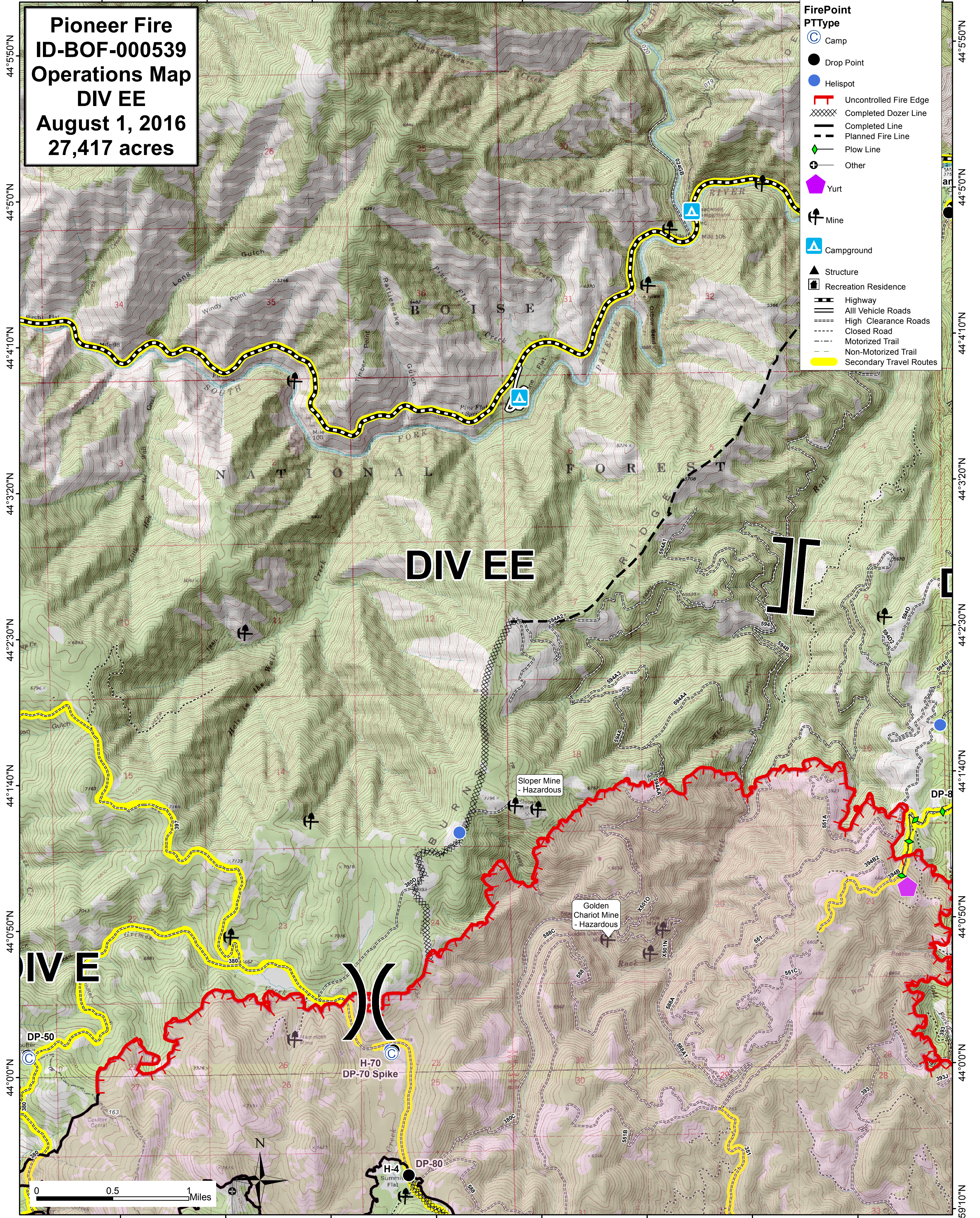


115°44'10"W 115°43'20"W 115°42'30"W 115°41'40"W 115°40'50"W 115°40'0"W 115°39'10"W 115°38'20"W 115°37'30"W

Pioneer Fire
ID-BOF-000539
Operations Map
DIV EE
August 1, 2016
27,417 acres

- FirePoint**
PTType
- Camp
 - Drop Point
 - Helispot
 - Uncontrolled Fire Edge
 - Completed Dozer Line
 - Completed Fire Line
 - Planned Fire Line
 - Plow Line
 - Other
 - Yurt
 - Mine
 - Campground
 - Structure
 - Recreation Residence
 - Highway
 - All Vehicle Roads
 - High Clearance Roads
 - Closed Road
 - Motorized Trail
 - Non-Motorized Trail
 - Secondary Travel Routes



DIV EE

Sloper Mine - Hazardous

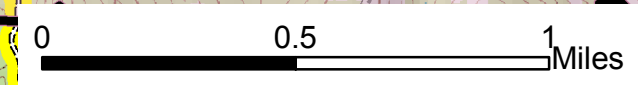
Golden Chariot Mine - Hazardous

H-70
DP-70 Spike

H-4
Summit Flat

DP-50

DP-8



DIV EE

44°0'0"N

44°0'0"N

44°0'0"N

44°5'0"N

44°5'0"N

44°5'0"N

44°5'0"N

44°5'0"N

44°5'0"N

44°5'0"N

44°5'0"N

44°5'0"N

44°5'0"N

44°5'0"N

44°5'0"N

44°5'0"N

44°5'0"N

44°5'0"N

44°5'0"N

44°5'0"N

44°5'0"N

44°5'0"N

44°5'0"N

44°5'0"N

44°5'0"N

44°5'0"N

44°5'0"N

44°5'0"N

44°5'0"N

44°5'0"N

44°5'0"N

44°5'0"N

44°5'0"N

44°5'0"N

44°5'0"N

44°5'0"N

44°5'0"N

44°5'0"N

44°5'0"N

44°5'0"N

44°5'0"N

115°44'10"W 115°43'20"W 115°42'30"W 115°41'40"W 115°40'50"W 115°40'0"W 115°39'10"W 115°38'20"W

43°59'10"N