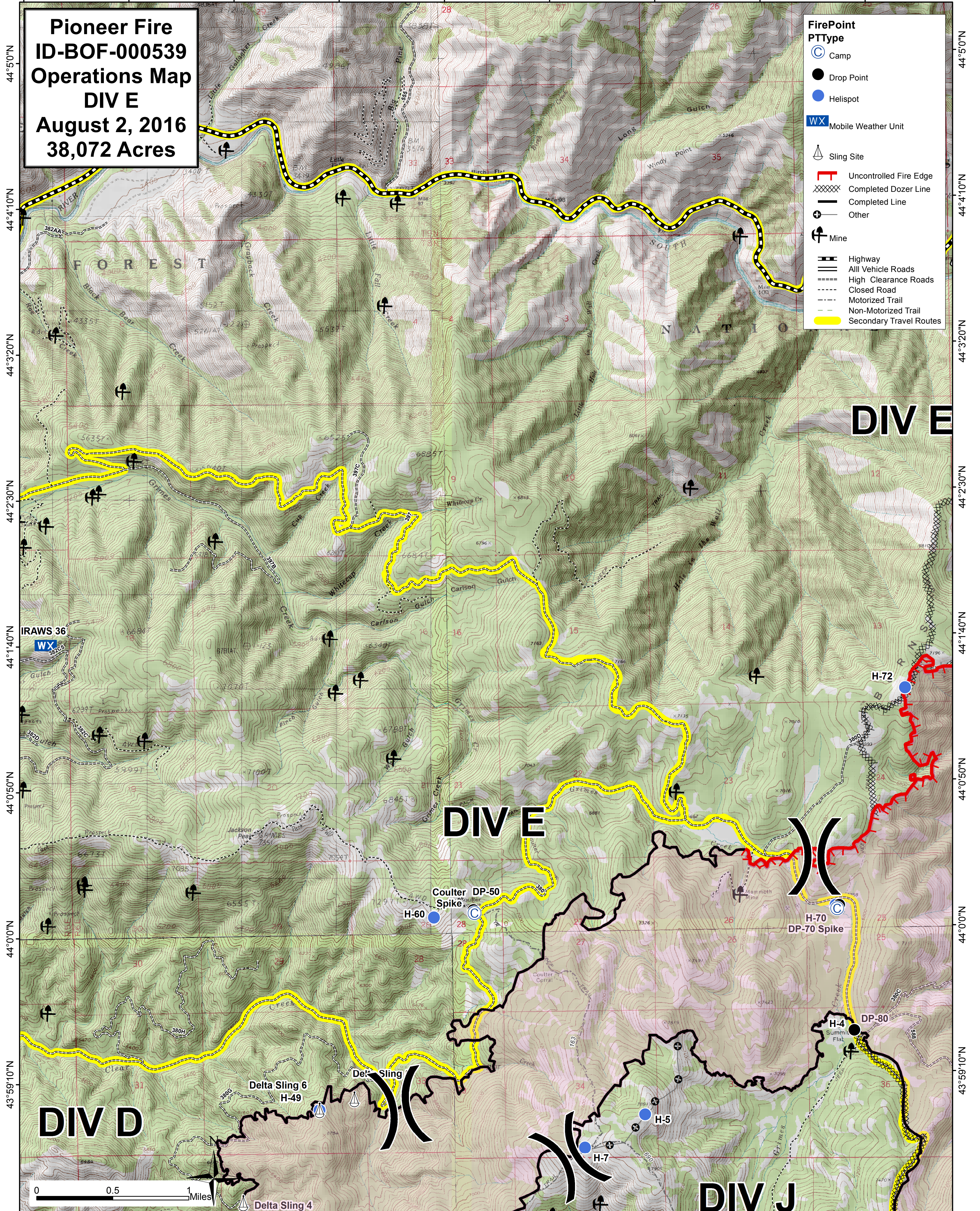


115°48'20"W 115°47'30"W 115°46'40"W 115°45'50"W 115°45'0"W 115°44'10"W 115°43'20"W 115°42'30"W 115°41'40"W



Pioneer Fire
ID-BOF-000539
Operations Map
DIV E
August 2, 2016
38,072 Acres

- FirePoint**
PType
- Camp
 - Drop Point
 - Helispot
 - Mobile Weather Unit
 - Sling Site
 - Uncontrolled Fire Edge
 - Completed Dozer Line
 - Completed Line
 - Other
 - Mine
 - Highway
 - All Vehicle Roads
 - High Clearance Roads
 - Closed Road
 - Motorized Trail
 - Non-Motorized Trail
 - Secondary Travel Routes

DIV E

DIV E

DIV D

DIV J

0 0.5 1 Miles

115°48'20"W 115°47'30"W 115°46'40"W 115°45'50"W 115°45'0"W 115°44'10"W 115°43'20"W 115°42'30"W 115°41'40"W

44°50'0"N
44°4'10"N
44°3'20"N
44°2'30"N
44°1'40"N
44°0'50"N
44°0'0"N
43°59'10"N

44°50'0"N
44°4'10"N
44°3'20"N
44°2'30"N
44°1'40"N
44°0'50"N
44°0'0"N
43°59'10"N