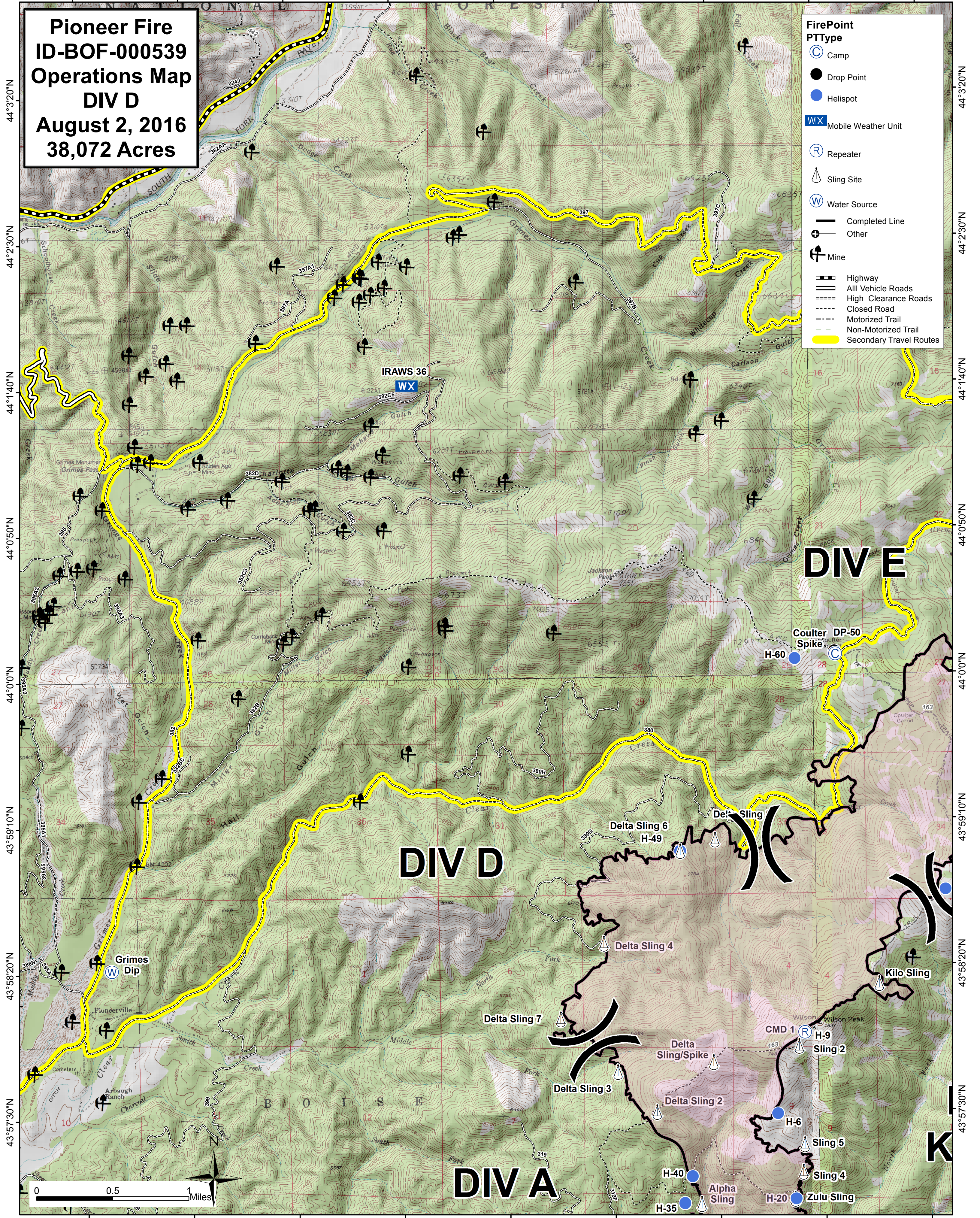


115°50'50"W 115°50'0"W 115°49'10"W 115°48'20"W 115°47'30"W 115°46'40"W 115°45'50"W 115°45'0"W 115°44'10"W

Pioneer Fire
ID-BOF-000539
Operations Map
DIV D
August 2, 2016
38,072 Acres

- FirePoint PType**
- Camp
 - Drop Point
 - Helispot
 - Mobile Weather Unit
 - Repeater
 - Sling Site
 - Water Source
 - Completed Line
 - Other
 - Mine
- Line Types**
- Highway
 - All Vehicle Roads
 - High Clearance Roads
 - Closed Road
 - Motorized Trail
 - Non-Motorized Trail
 - Secondary Travel Routes



44°3'20"N
44°2'30"N
44°1'40"N
44°0'50"N
44°0'0"N
43°59'10"N
43°58'20"N
43°57'30"N

44°3'20"N
44°2'30"N
44°1'40"N
44°0'50"N
44°0'0"N
43°59'10"N
43°58'20"N
43°57'30"N

115°50'50"W 115°50'0"W 115°49'10"W 115°48'20"W 115°47'30"W 115°46'40"W 115°45'50"W 115°45'0"W 115°44'10"W