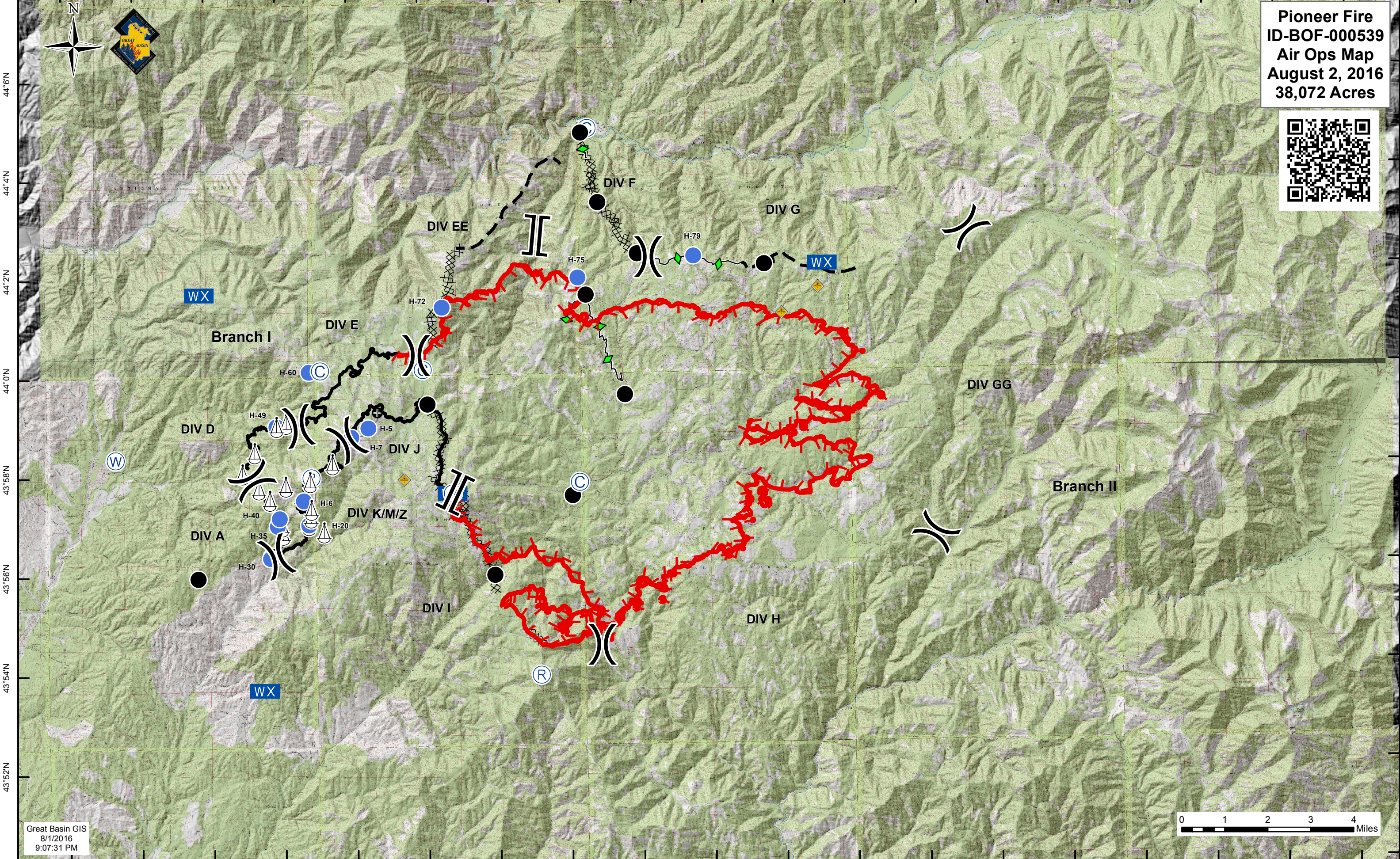
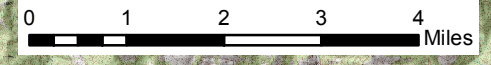


115°52'W 115°50'W 115°48'W 115°46'W 115°44'W 115°42'W 115°40'W 115°38'W 115°36'W 115°34'W 115°32'W 115°30'W 115°28'W 115°26'W 115°24'W 115°22'W 115°20'W 115°18'W 115°16'W

Pioneer Fire
ID-BOF-000539
Air Ops Map
August 2, 2016
38,072 Acres



Great Basin GIS
8/1/2016
9:07:31 PM



115°52'W 115°50'W 115°48'W 115°46'W 115°44'W 115°42'W 115°40'W 115°38'W 115°36'W 115°34'W 115°32'W 115°30'W 115°28'W 115°26'W 115°24'W 115°22'W 115°20'W 115°18'W 115°16'W

44°6'N
44°4'N
44°2'N
44°0'N
43°58'N
43°56'N
43°54'N
43°52'N

44°6'N
44°4'N
44°2'N
44°0'N
43°58'N
43°56'N
43°54'N
43°52'N