

115°38'W

115°36'W

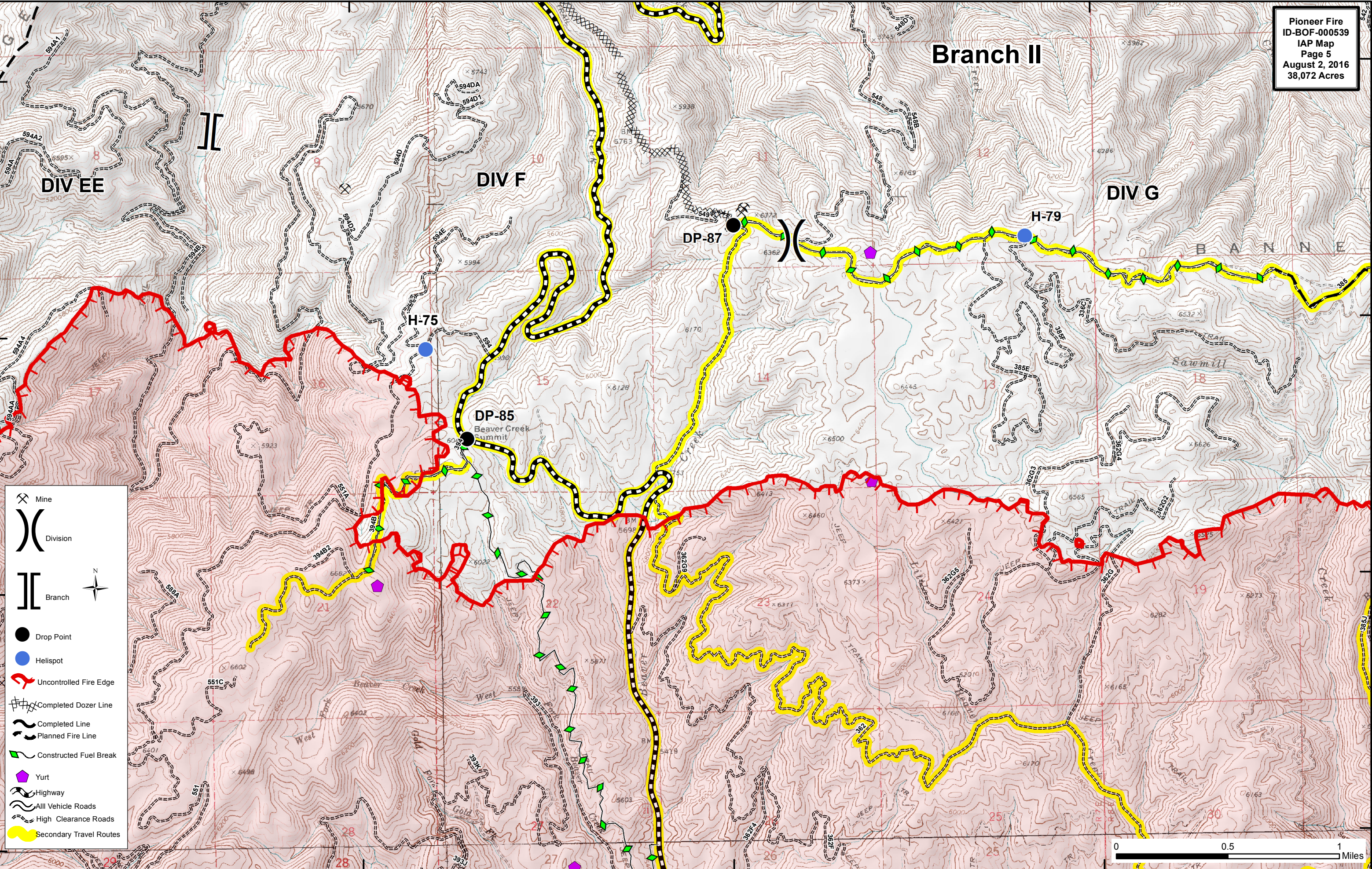
115°34'W

Pioneer Fire
 ID-BOF-000539
 IAP Map
 Page 5
 August 2, 2016
 38,072 Acres

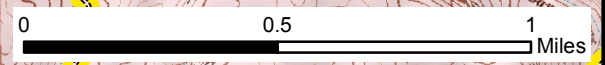
Branch II

44°3'N
 44°2'N
 44°1'N
 44°0'N

44°3'N
 44°2'N
 44°1'N
 44°0'N



- Mine
- Division
- Branch
- N
- Drop Point
- Helispot
- Uncontrolled Fire Edge
- Completed Dozer Line
- Completed Line
- Planned Fire Line
- Constructed Fuel Break
- Yurt
- Highway
- All Vehicle Roads
- High Clearance Roads
- Secondary Travel Routes



115°38'W

115°36'W

115°34'W