

115°32'W

115°30'W

115°28'W

115°26'W

44°3'N

44°3'N

44°2'N

44°2'N

44°1'N

44°1'N

44°0'N

44°0'N

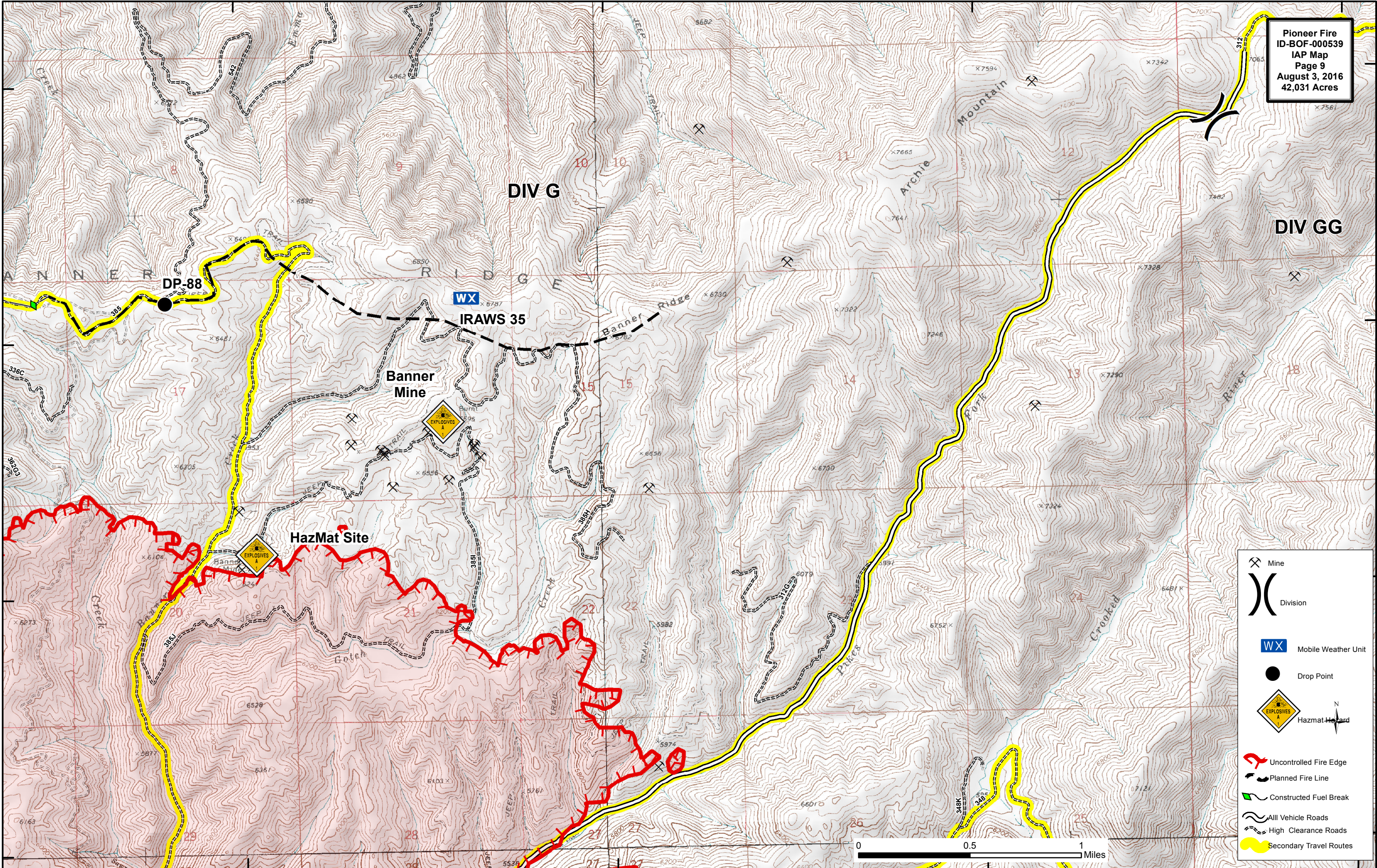
115°32'W

115°30'W

115°28'W

115°26'W

Pioneer Fire
ID-BOF-000539
IAP Map
Page 9
August 3, 2016
42,031 Acres



	Mine
	Division
	Mobile Weather Unit
	Drop Point
	Hazmat Hazard
	Uncontrolled Fire Edge
	Planned Fire Line
	Constructed Fuel Break
	All Vehicle Roads
	High Clearance Roads
	Secondary Travel Routes

